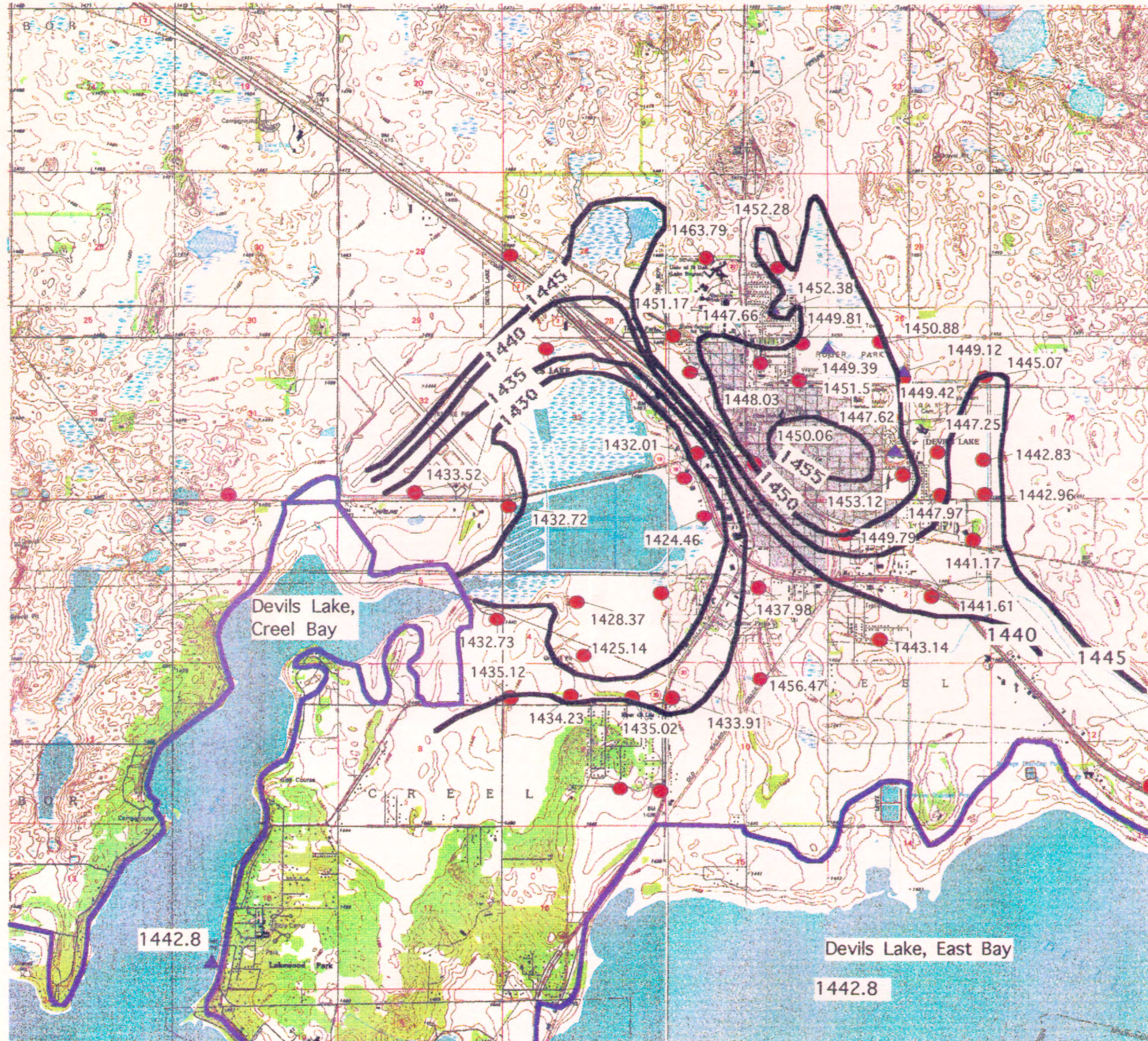


R. 64 W.



Base Prepared from USGS 7.5 minute series Quadrangle Maps

North Dakota Water Resources  
Investigation Number 34

Prepared by the North Dakota State  
Commission in cooperation with the City  
of Devils Lake, North Dakota



**EXPLANATION**

- Observation well
- 1440, Water level elevation (feet)
- ▲ Staff gage
- 1440 Water level contour(feet)
- Level of Devils Lake, 9/2/1997

— One mile —



T. 154 N.

T. 153 N.

Plate 4. Water level elevation of the shallow  
water table in the vicinity of the city of Devils  
Lake 08/25/97