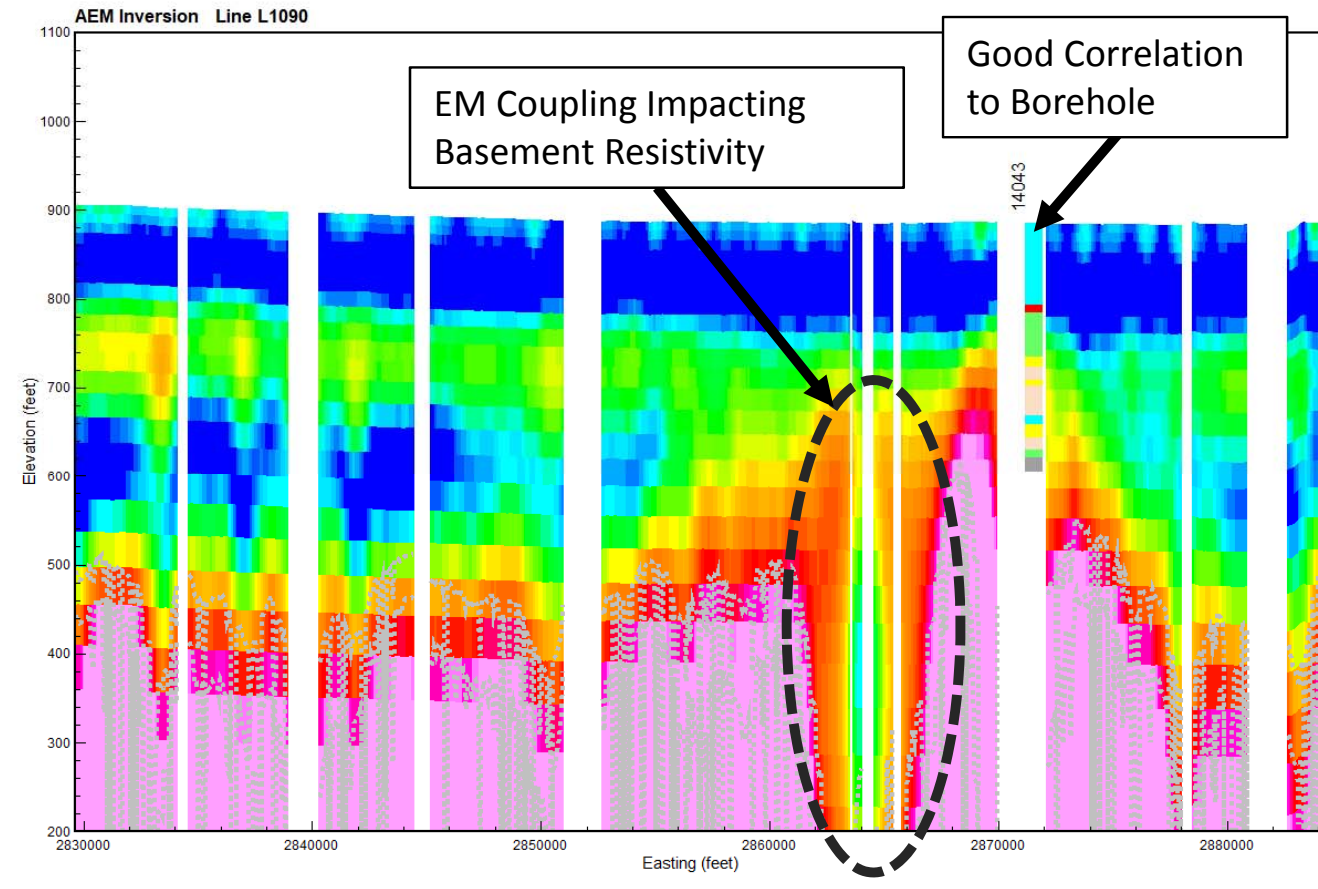


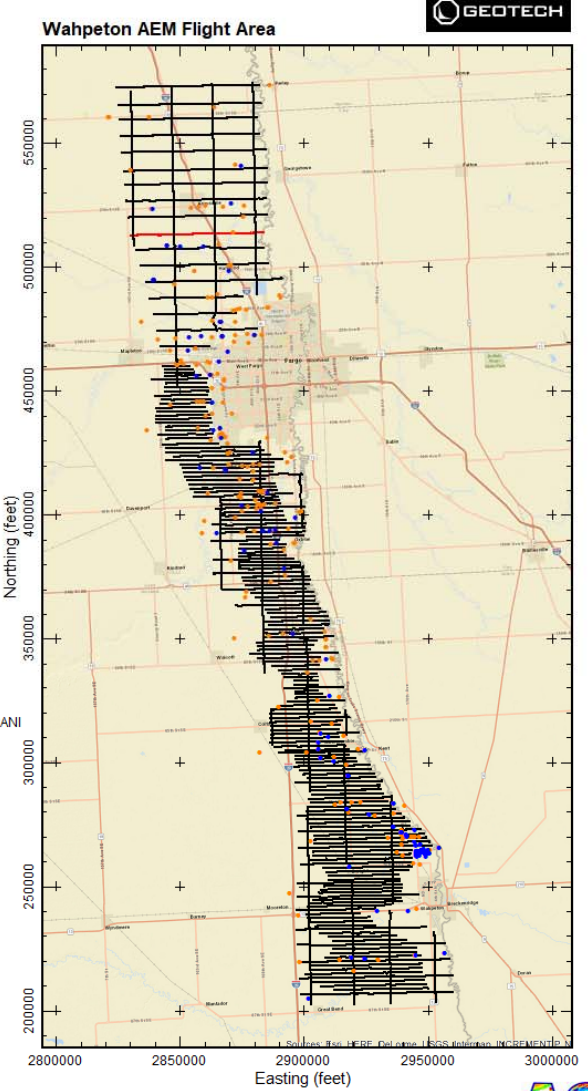
NORTH DAKOTA STATE WATER COMMISSION
 900 EAST BOULEVARD AVE, DEPT. 770
 BISMARCK, ND 58505-0850

Results of the final inversion of Airborne Electromagnetic (AEM) data collected along flight lines within the Wahpeton AEM flight area from November 7-18, 2017. The inversions shown are Spatially-Constrained using the Aarhus Geo Software Workbench versions 5.6.2.0. Boreholes are from the North Dakota State Water Commission Mapservice download on November 6, 2017. Prepared for the North Dakota State Water Commission under contract to Geotech LTD by Aqua Geo Frameworks, LLC.



Gray dashed lines are the Upper and Lower Depth of Investigation

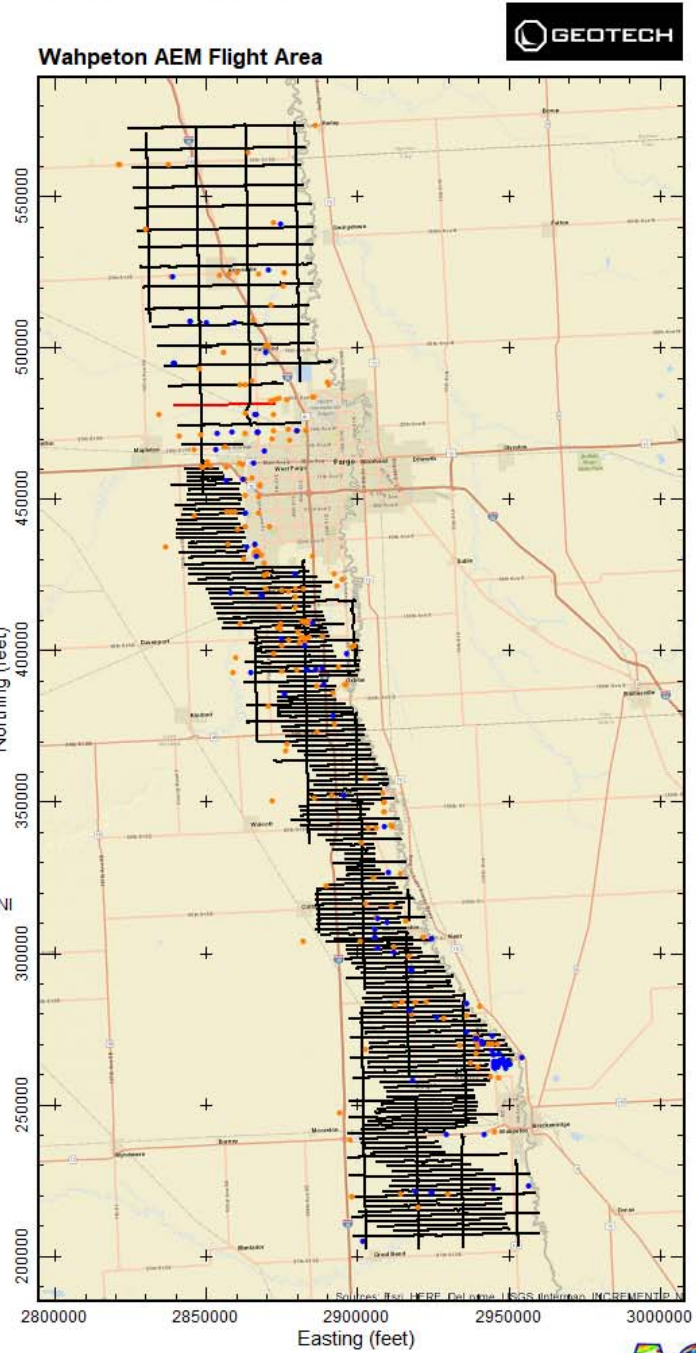
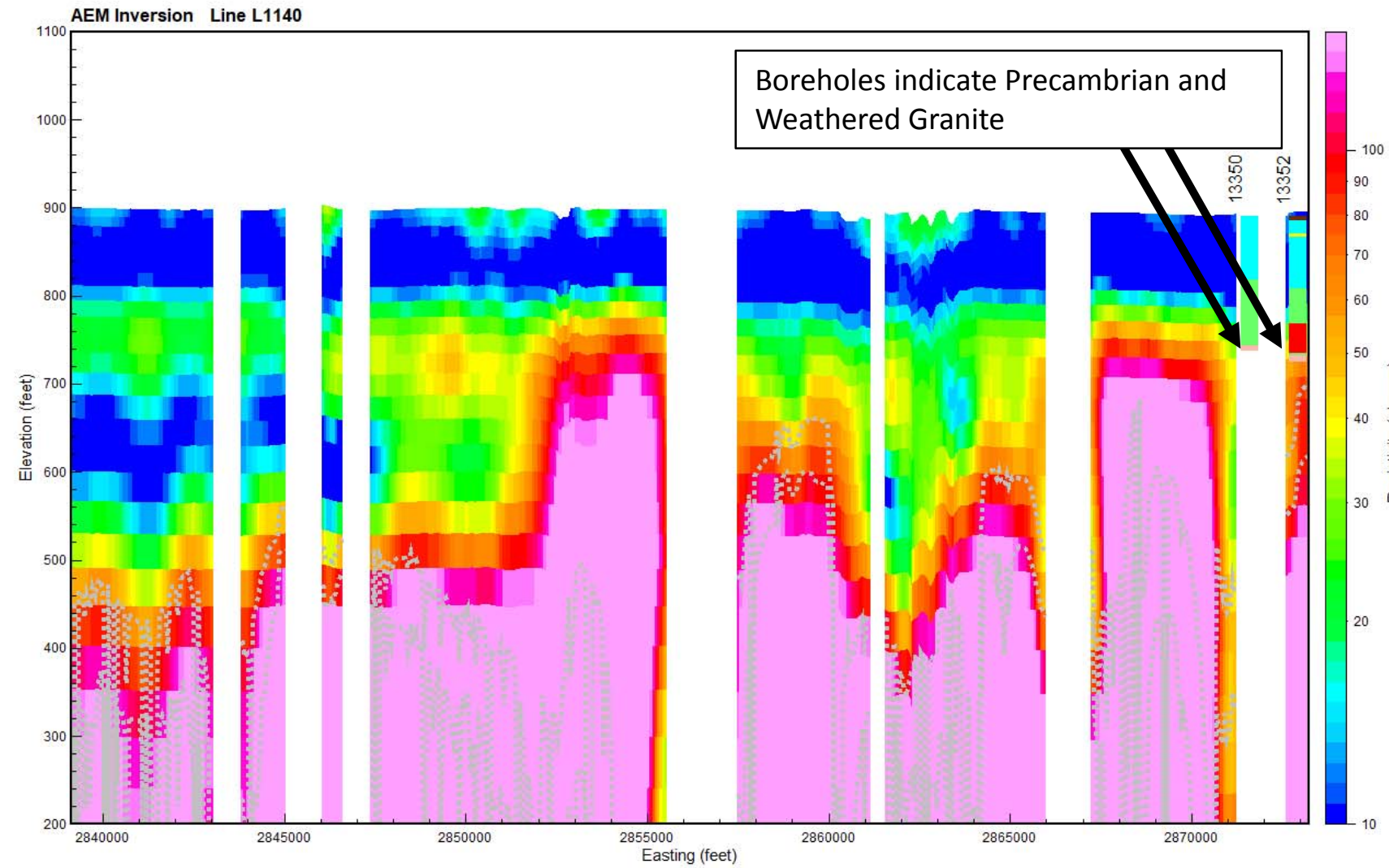
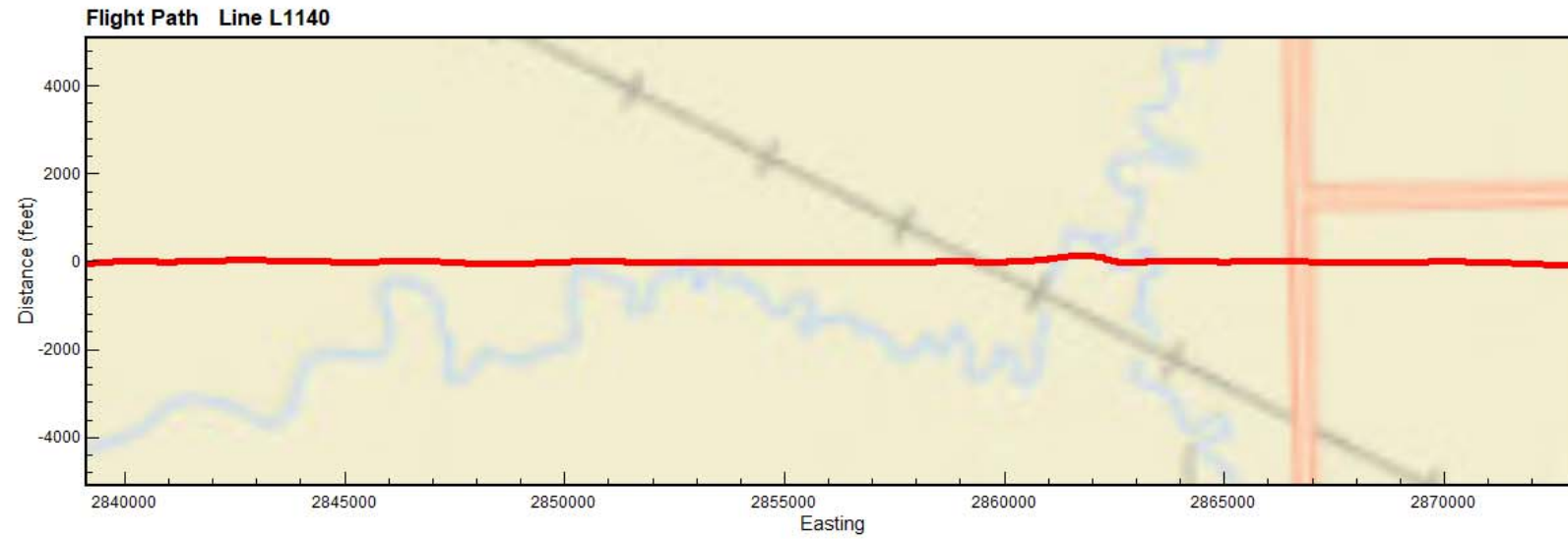
Boreholes plotted within 1/4 mile of flight line



Map projection NAD83 State Plane North Dakota South (Int. foot), NAVD88 (feet)



Results of the final inversion of Airborne Electromagnetic (AEM) data collected along flight lines within the Wahpeton AEM flight area from November 7-18, 2017. The inversions shown are Spatially-Constrained using the Aarhus Geo Software Workbench versions 5.6.2.0. Boreholes are from the North Dakota State Water Commission Mapservice download on November 6, 2017. Prepared for the North Dakota State Water Commission under contract to Geotech LTD by Aqua Geo Frameworks, LLC.

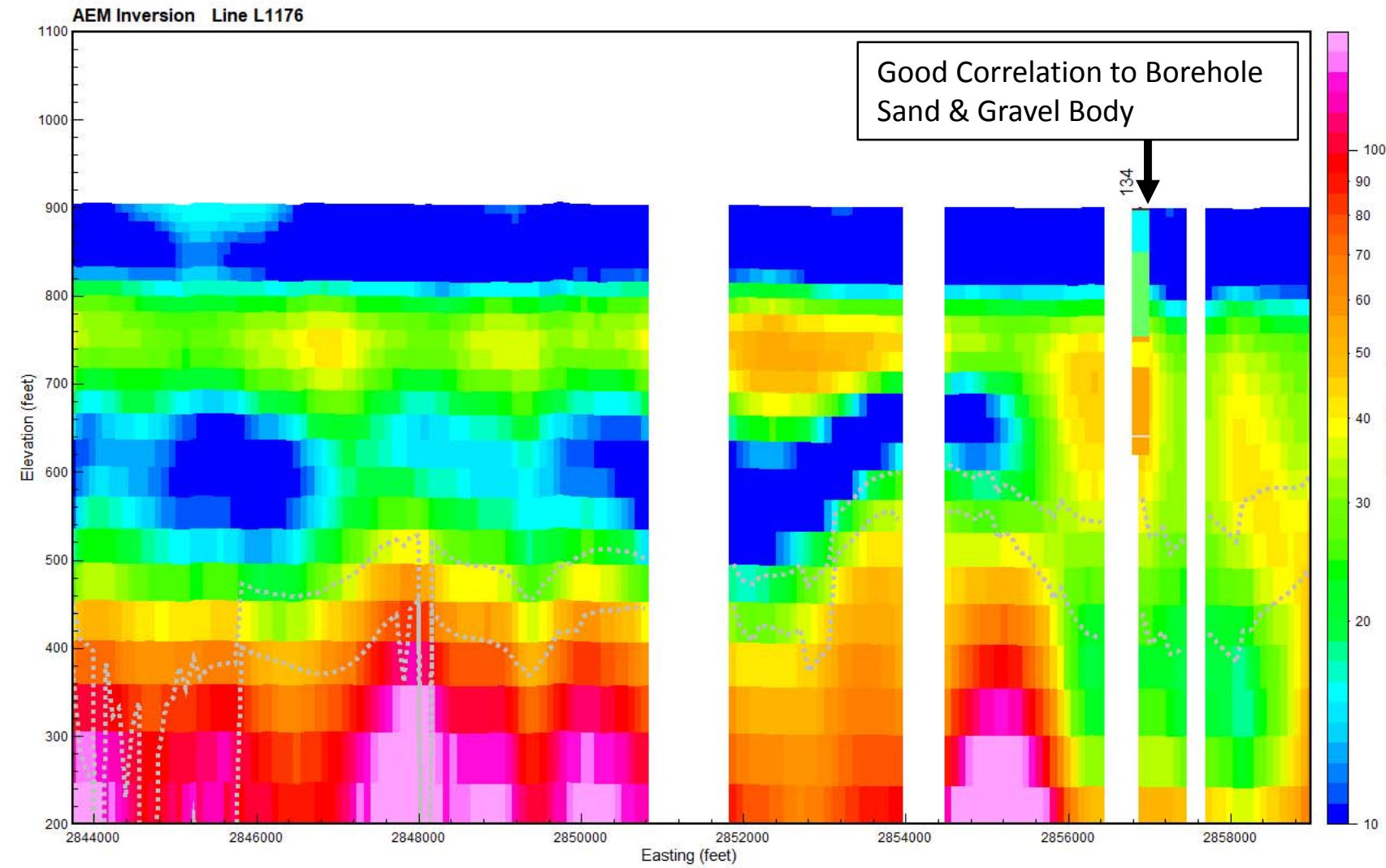
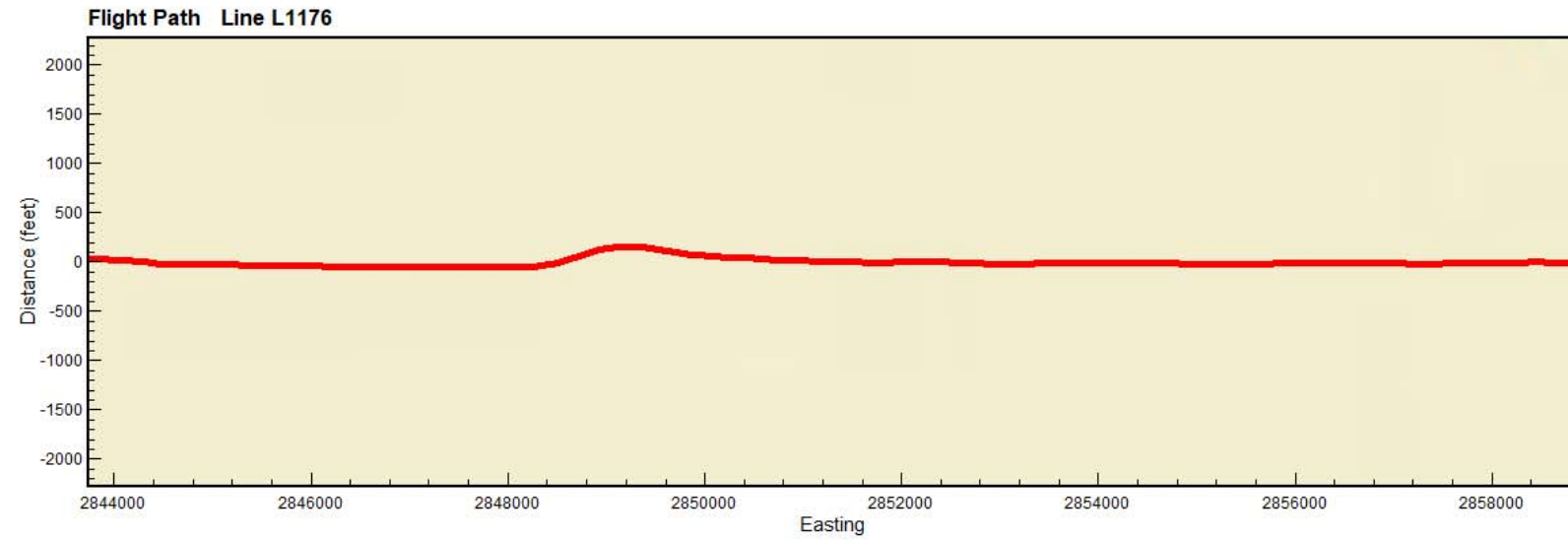


Gray dashed lines are the Upper and Lower Depth of Investigation

Boreholes plotted within 1/4 mile of flight line

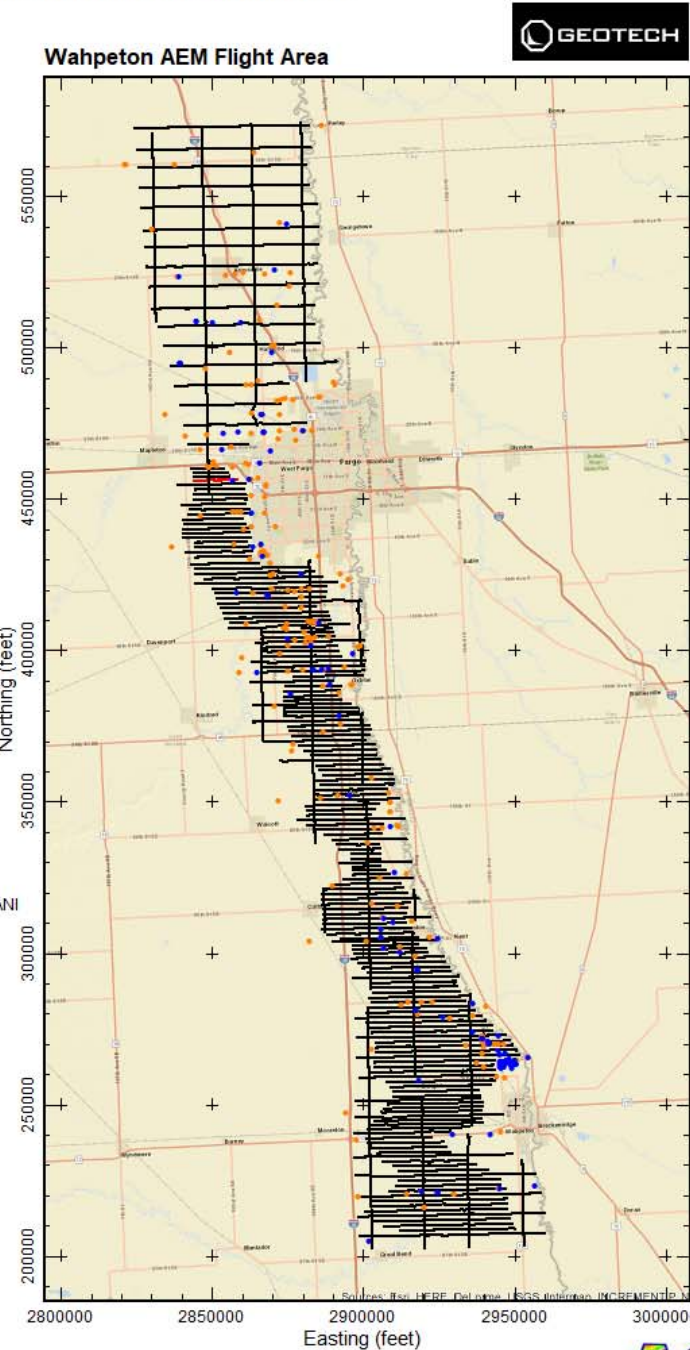
Map projection NAD83 State Plane North Dakota South (Int. foot), NAVD88 (feet)

Results of the final inversion of Airborne Electromagnetic (AEM) data collected along flight lines within the Wahpeton AEM flight area from November 7-18, 2017. The inversions shown are Spatially-Constrained using the Aarhus Geo Software Workbench versions 5.6.2.0. Boreholes are from the North Dakota State Water Commission Mapservice download on November 6, 2017. Prepared for the North Dakota State Water Commission under contract to Geotech LTD by Aqua Geo Frameworks, LLC.



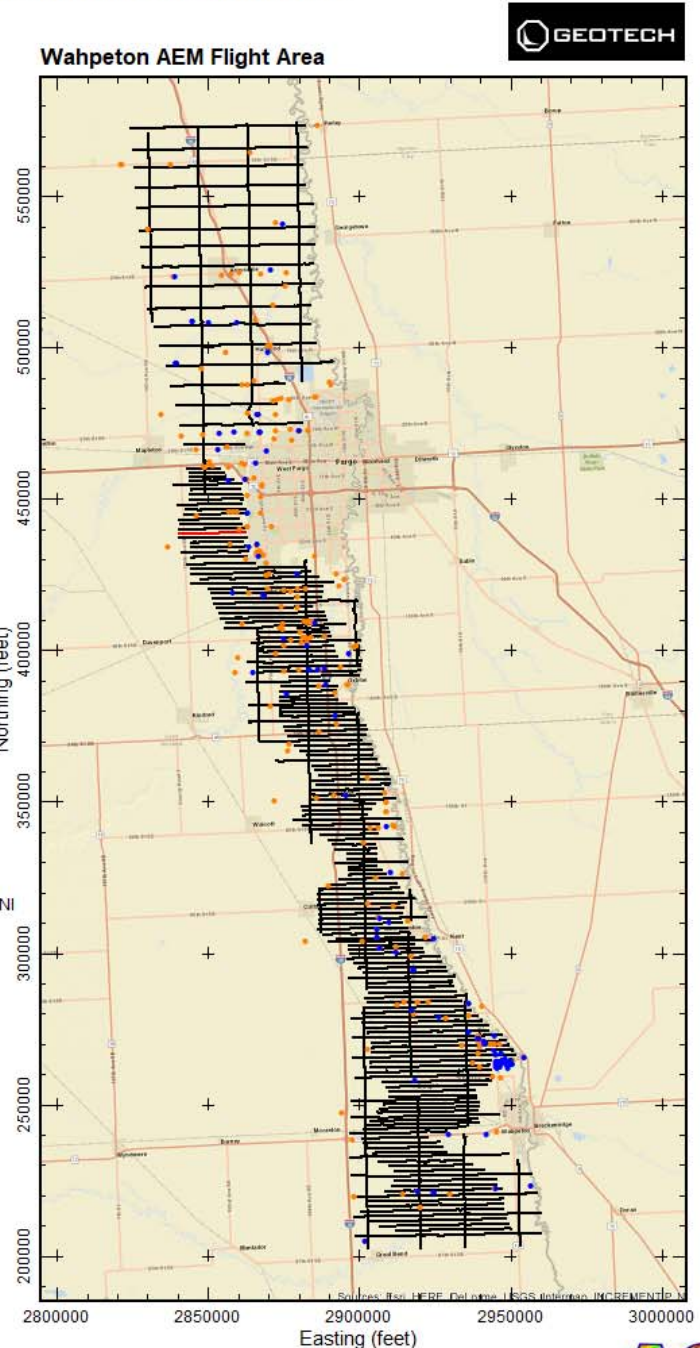
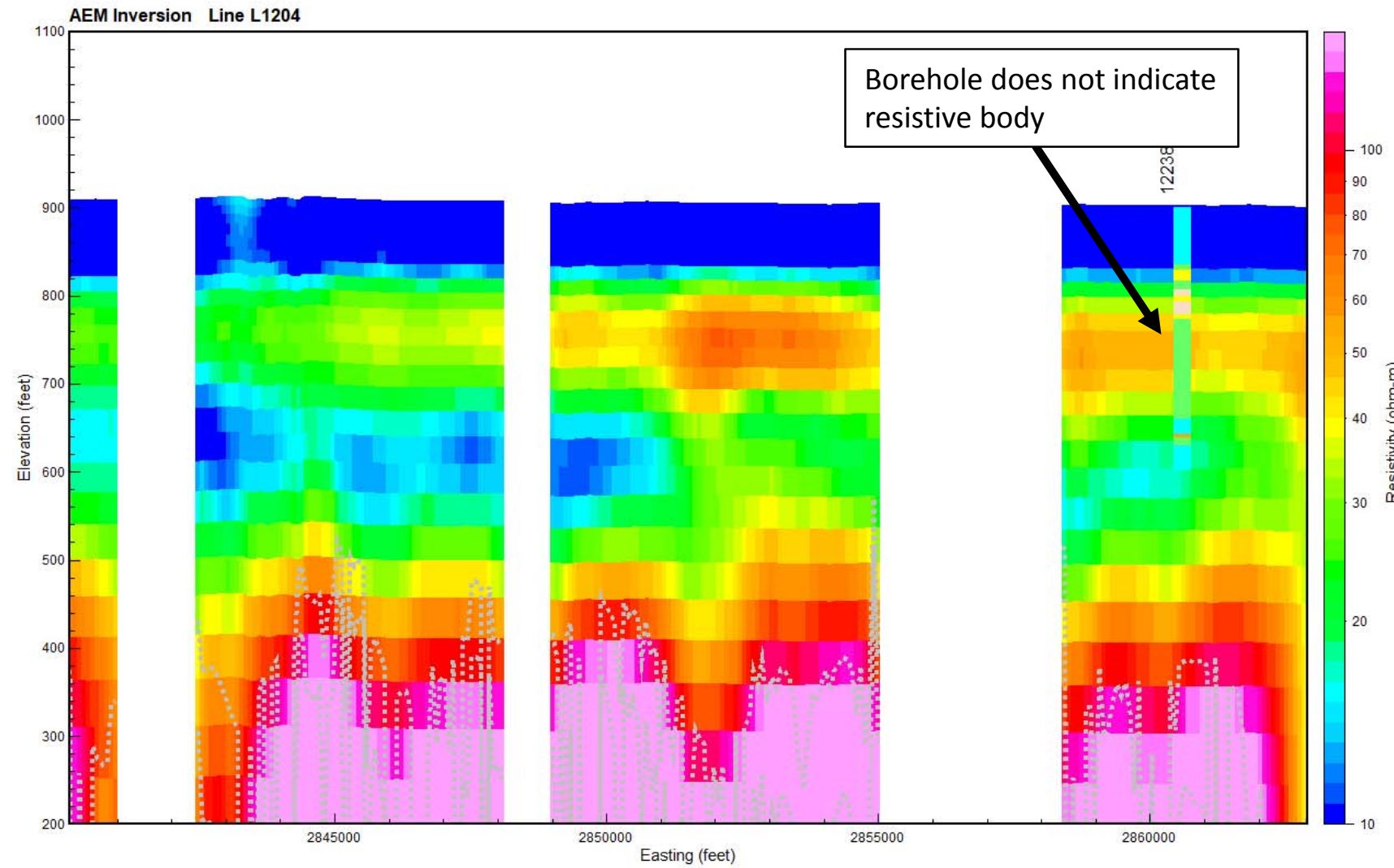
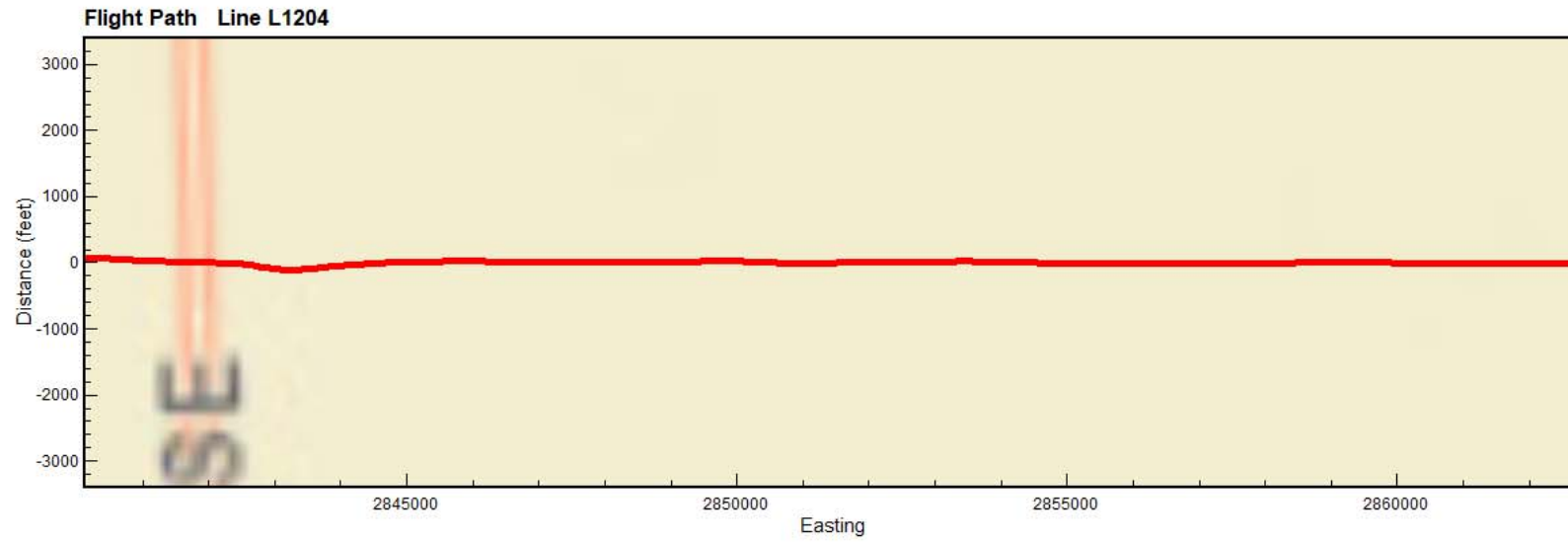
Gray dashed lines are the Upper and Lower Depth of Investigation

Boreholes plotted within 1/4 mile of flight line



Map projection NAD83 State Plane North Dakota South (Int. foot), NAVD88 (feet)

Results of the final inversion of Airborne Electromagnetic (AEM) data collected along flight lines within the Wahpeton AEM flight area from November 7-18, 2017. The inversions shown are Spatially-Constrained using the Aarhus Geo Software Workbench versions 5.6.2.0. Boreholes are from the North Dakota State Water Commission Mapservice download on November 6, 2017. Prepared for the North Dakota State Water Commission under contract to Geotech LTD by Aqua Geo Frameworks, LLC.

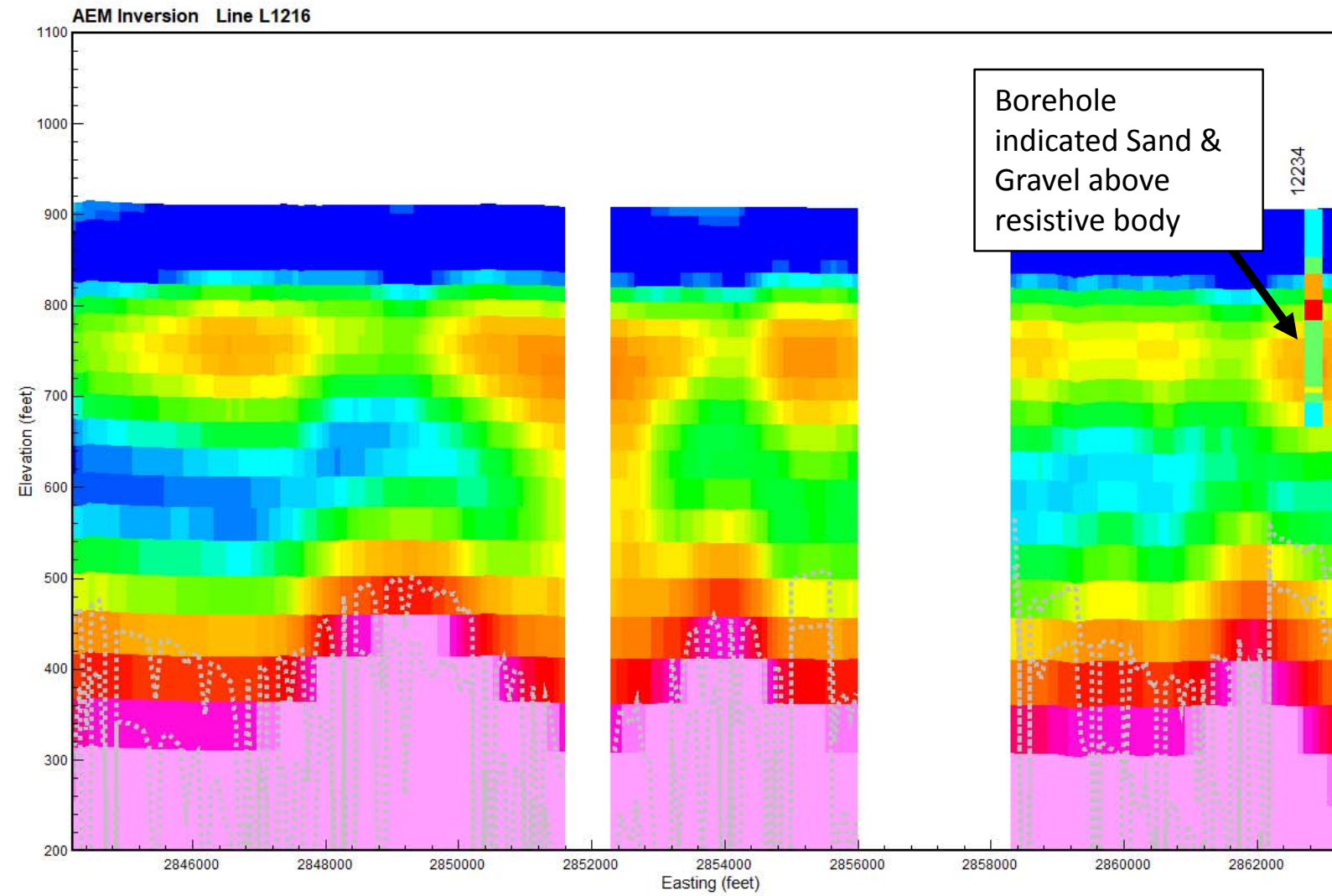
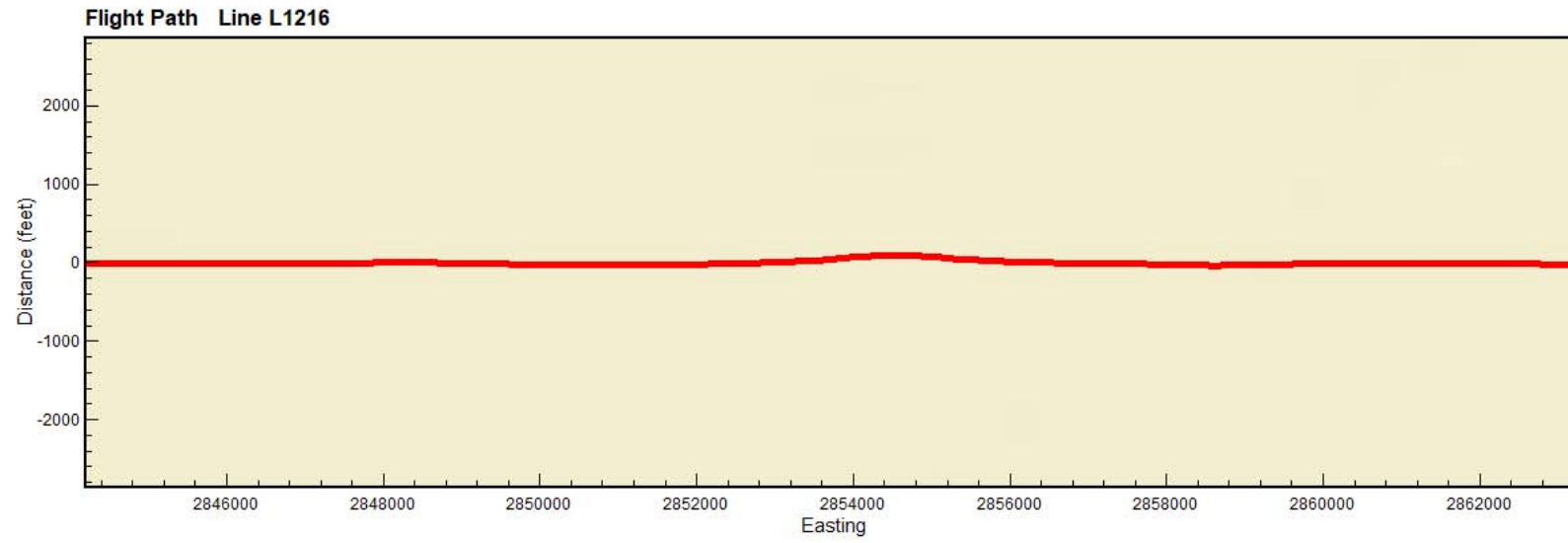


Gray dashed lines are the Upper and Lower Depth of Investigation

Boreholes plotted within 1/4 mile of flight line

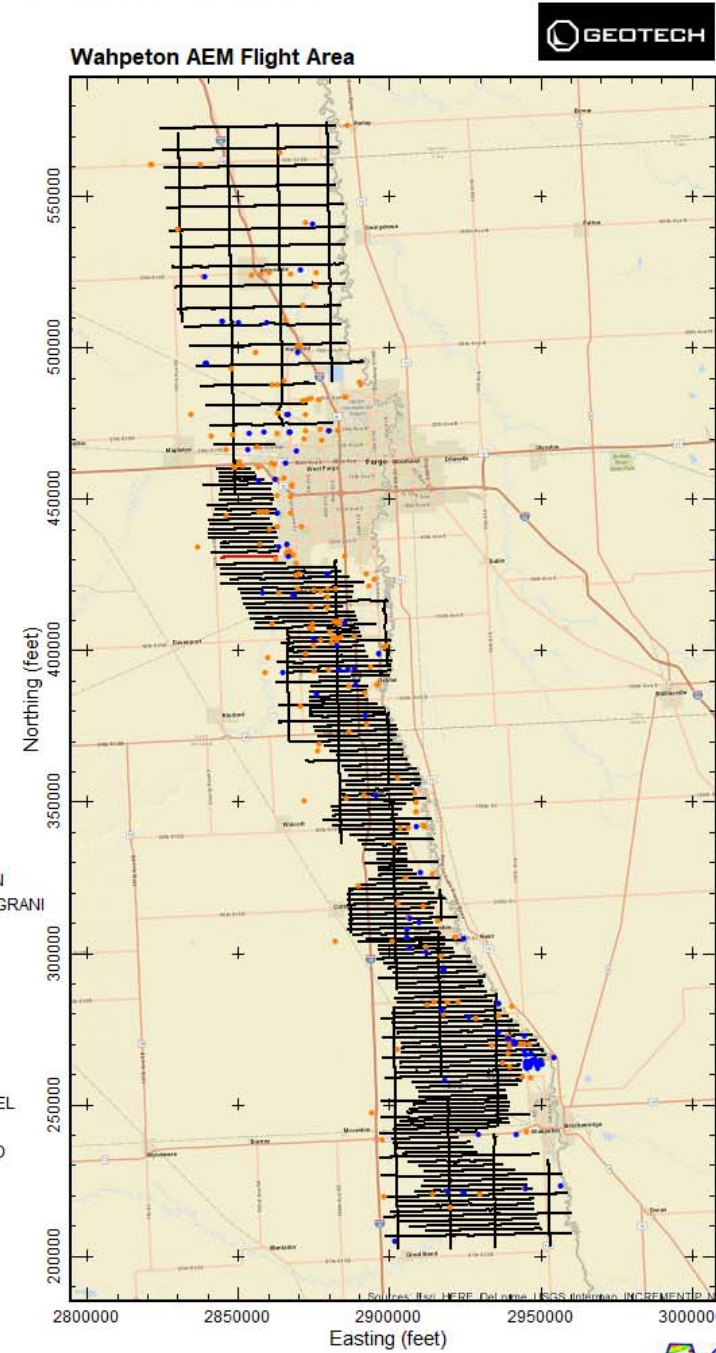
Map projection NAD83 State Plane North Dakota South (Int. foot), NAVD88 (feet)

Results of the final inversion of Airborne Electromagnetic (AEM) data collected along flight lines within the Wahpeton AEM flight area from November 7-18, 2017. The inversions shown are Spatially-Constrained using the Aarhus Geo Software Workbench versions 5.6.2.0. Boreholes are from the North Dakota State Water Commission Mapservice download on November 6, 2017. Prepared for the North Dakota State Water Commission under contract to Geotech LTD by Aqua Geo Frameworks, LLC.



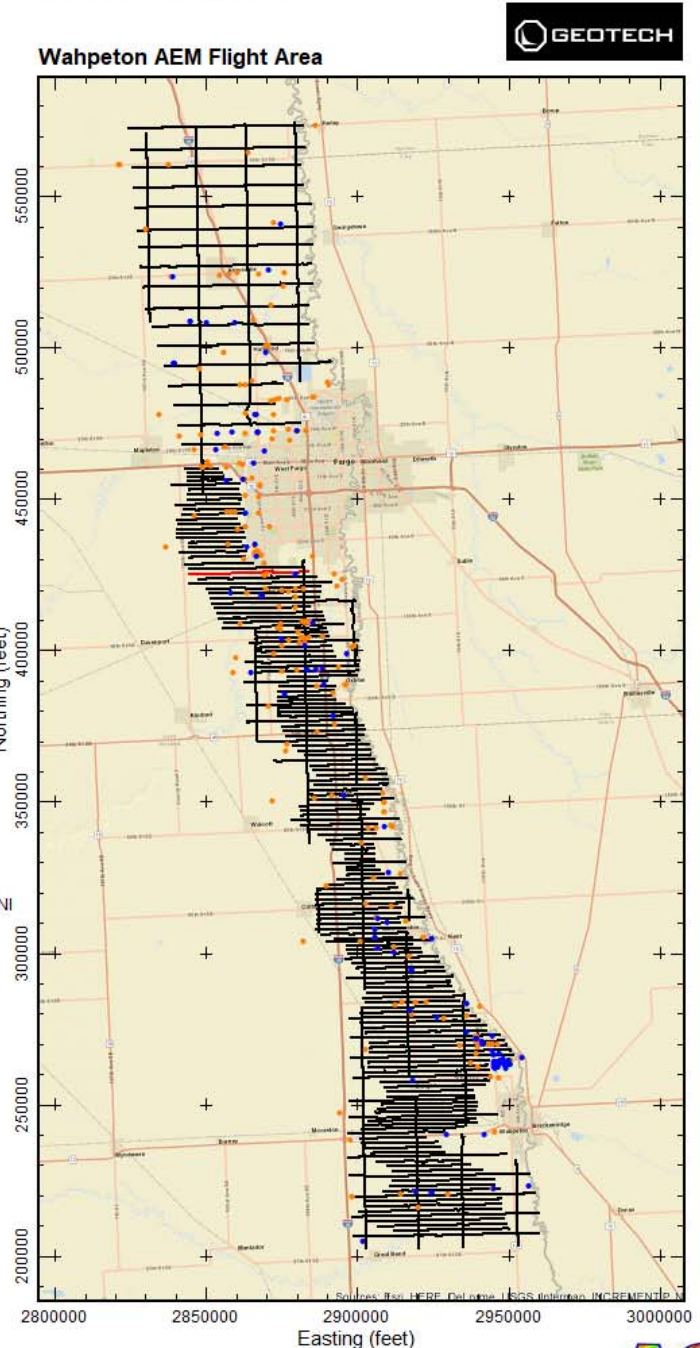
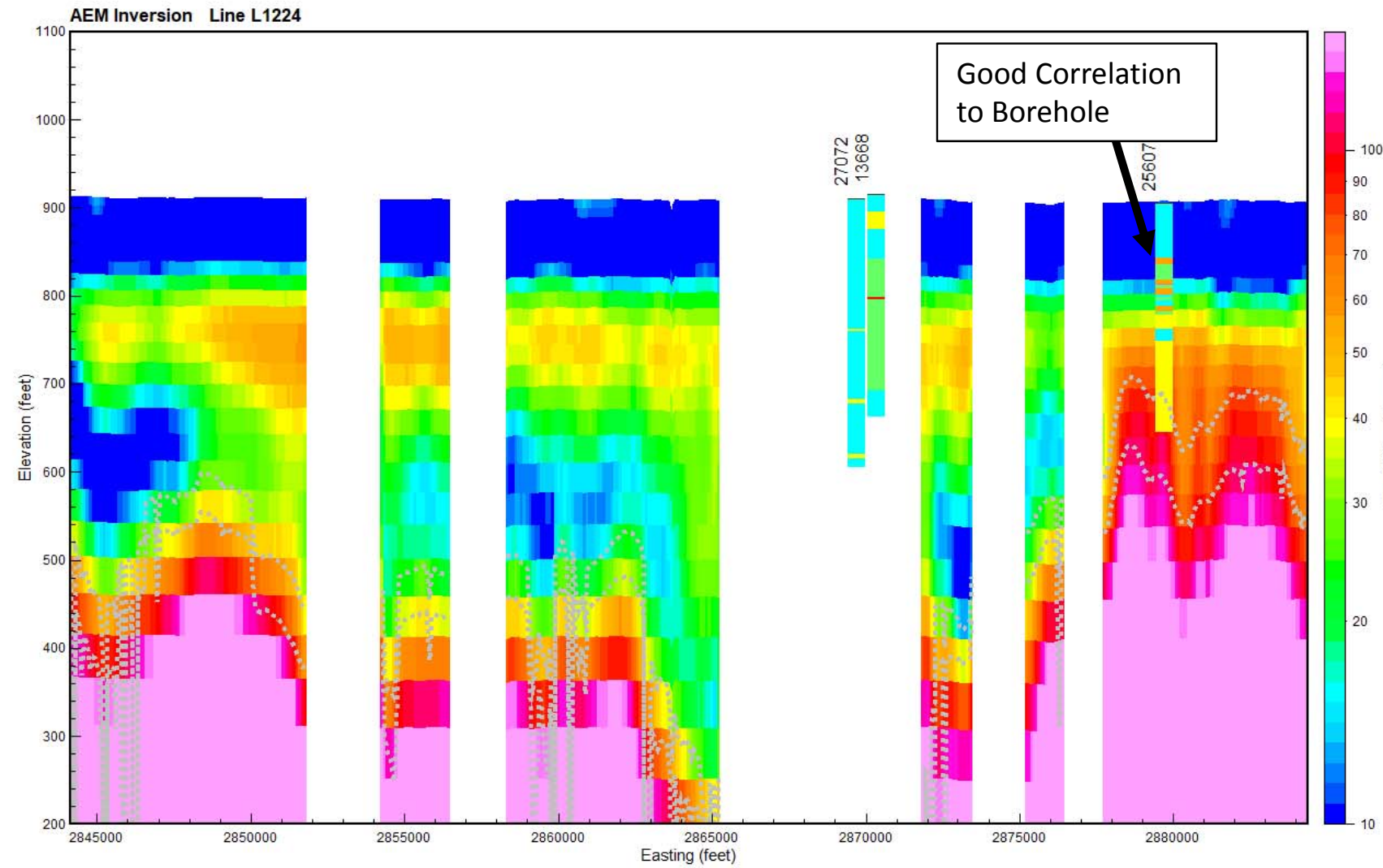
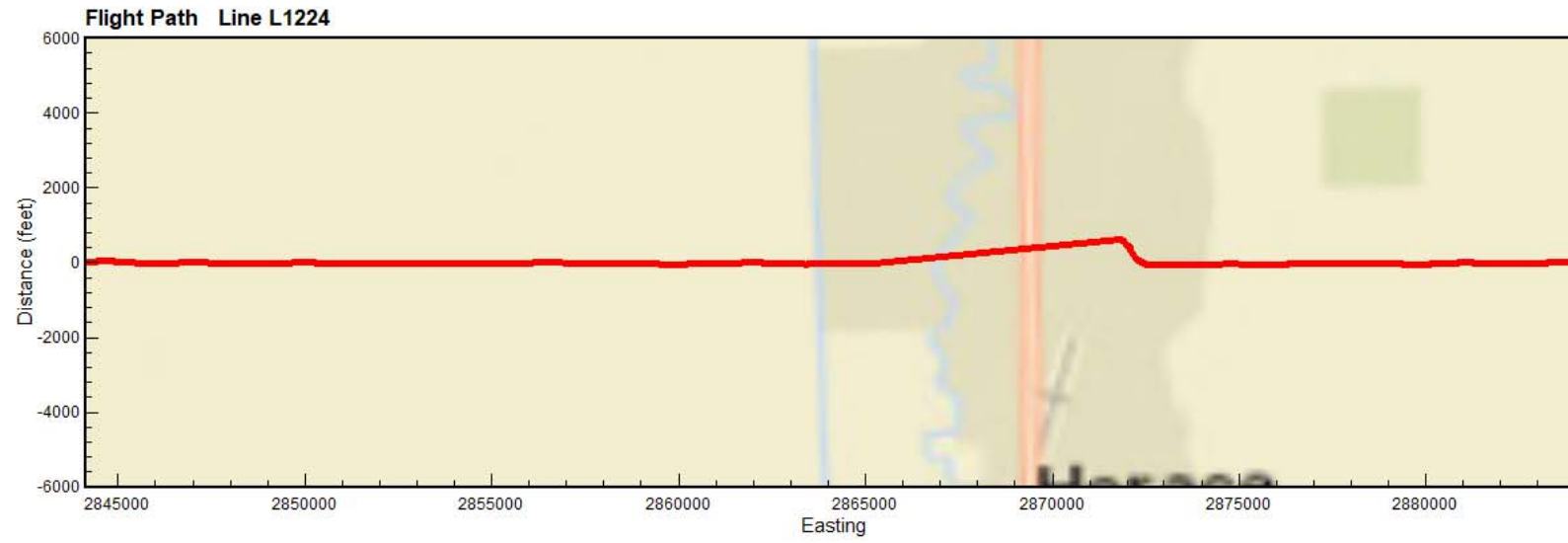
Gray dashed lines are the Upper and Lower Depth of Investigation

Boreholes plotted within 1/4 mile of flight line



Map projection NAD83 State Plane North Dakota South (Int. foot), NAVD88 (feet)

Results of the final inversion of Airborne Electromagnetic (AEM) data collected along flight lines within the Wahpeton AEM flight area from November 7-18, 2017. The inversions shown are Spatially-Constrained using the Aarhus Geo Software Workbench versions 5.6.2.0. Boreholes are from the North Dakota State Water Commission Mapservice download on November 6, 2017. Prepared for the North Dakota State Water Commission under contract to Geotech LTD by Aqua Geo Frameworks, LLC.

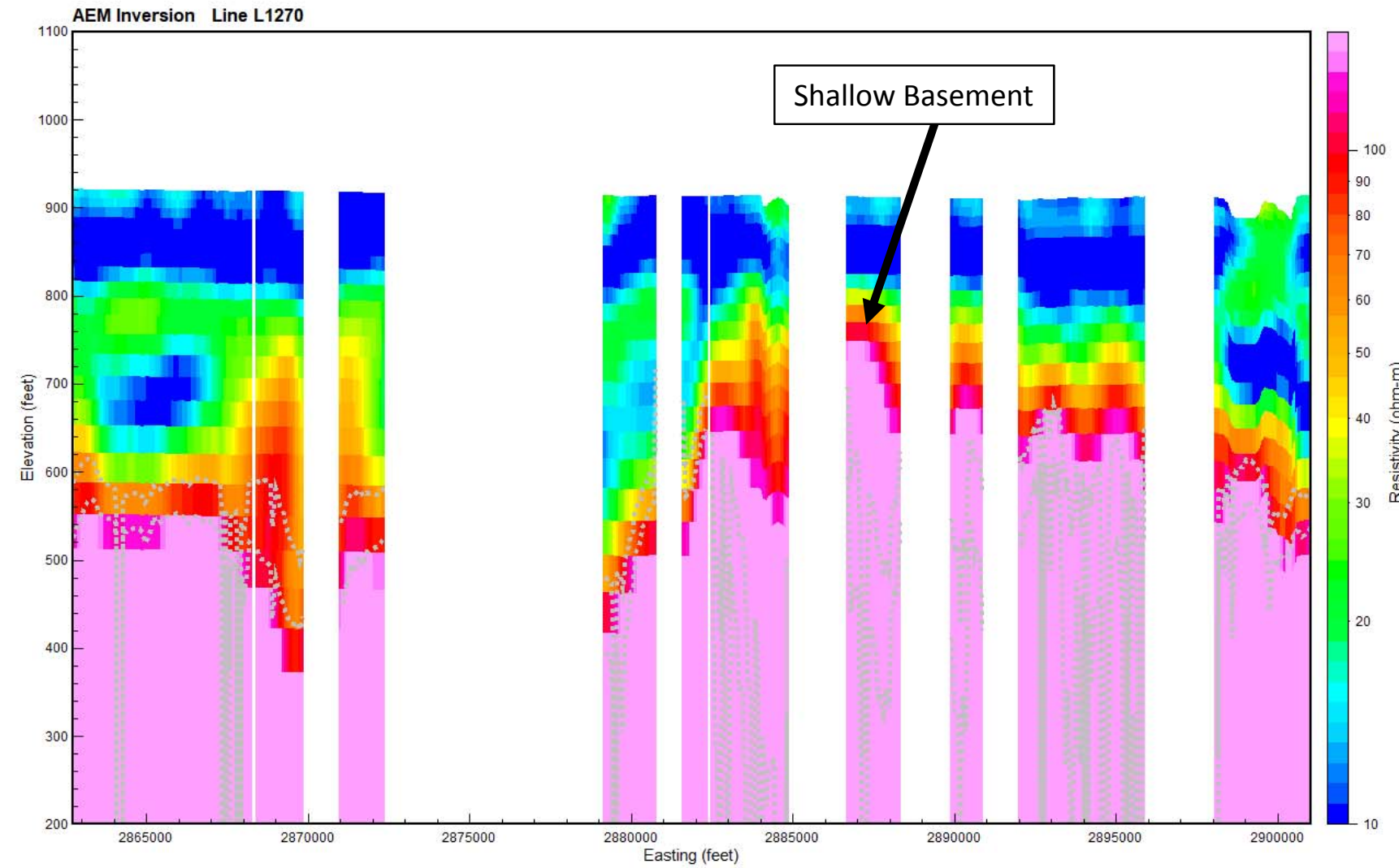
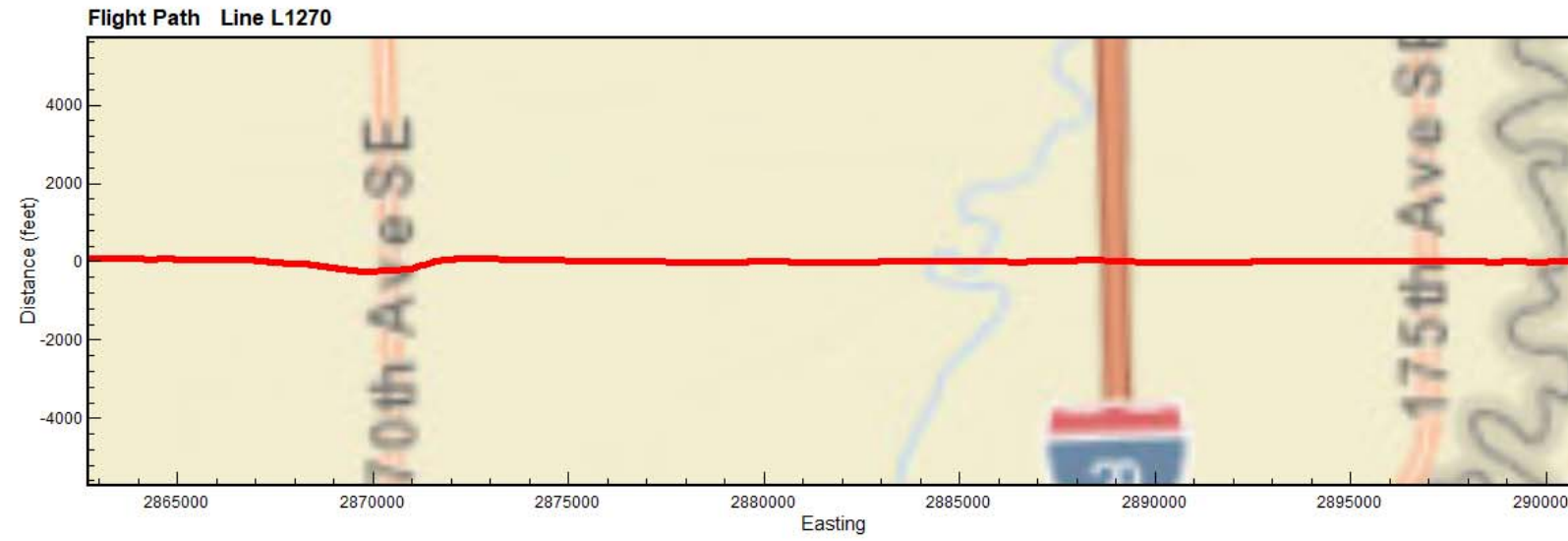


Gray dashed lines are the Upper and Lower Depth of Investigation

Boreholes plotted within 1/4 mile of flight line

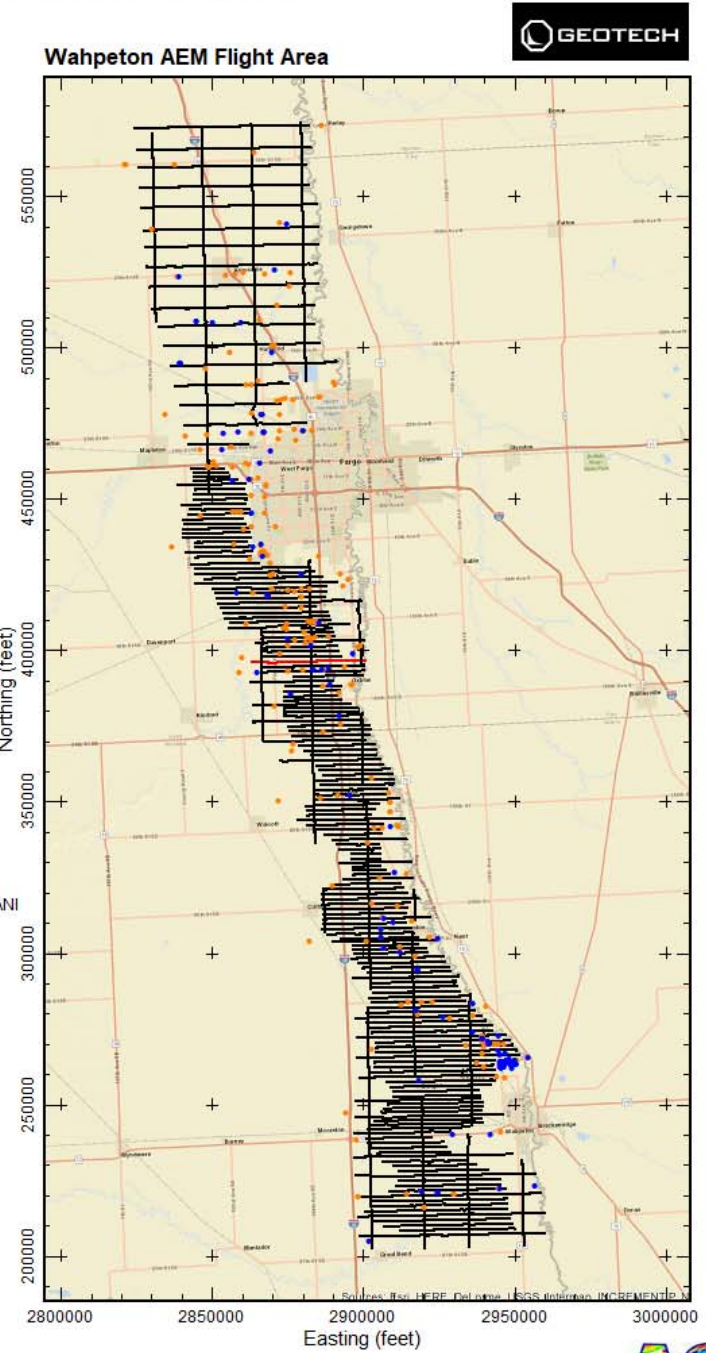
Map projection NAD83 State Plane North Dakota South (Int. foot), NAVD88 (feet)

Results of the final inversion of Airborne Electromagnetic (AEM) data collected along flight lines within the Wahpeton AEM flight area from November 7-18, 2017. The inversions shown are Spatially-Constrained using the Aarhus Geo Software Workbench versions 5.6.2.0. Boreholes are from the North Dakota State Water Commission Mapservice download on November 6, 2017. Prepared for the North Dakota State Water Commission under contract to Geotech LTD by Aqua Geo Frameworks, LLC.



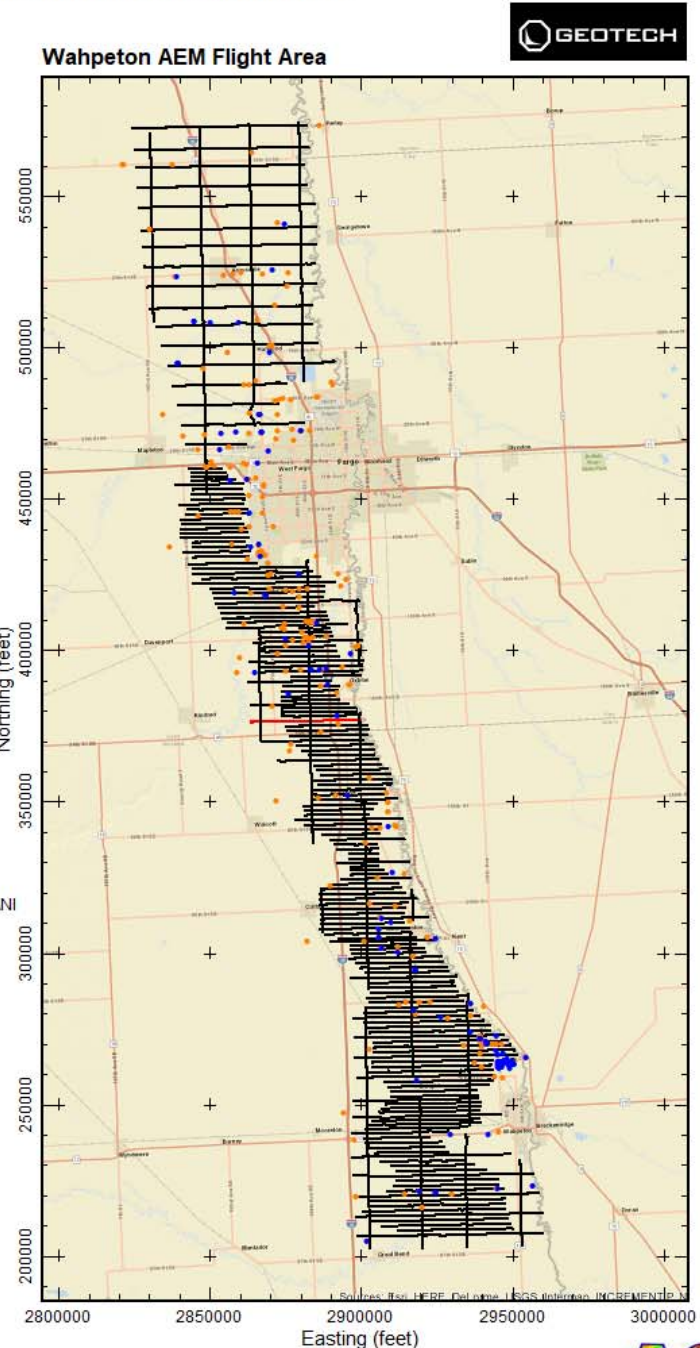
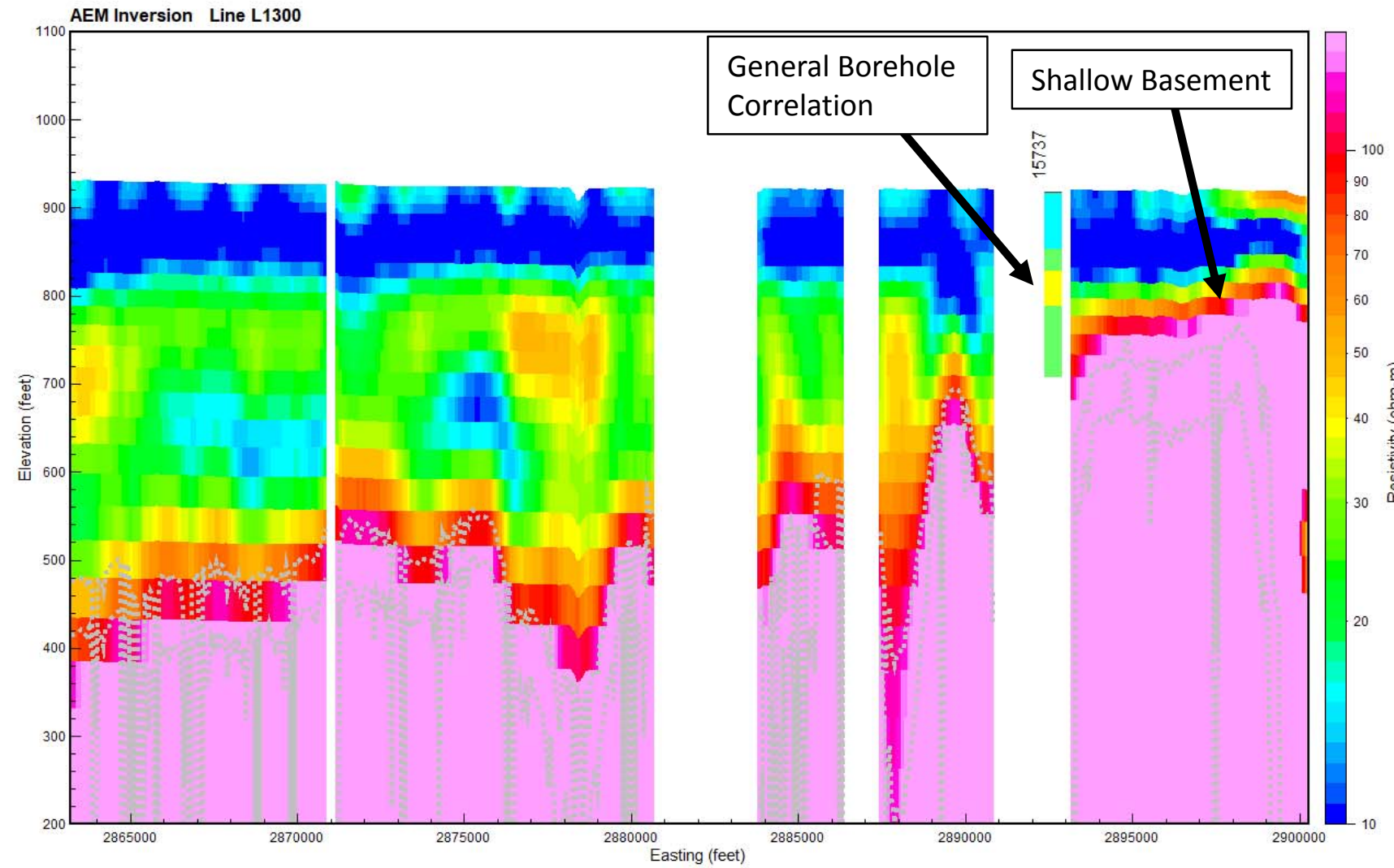
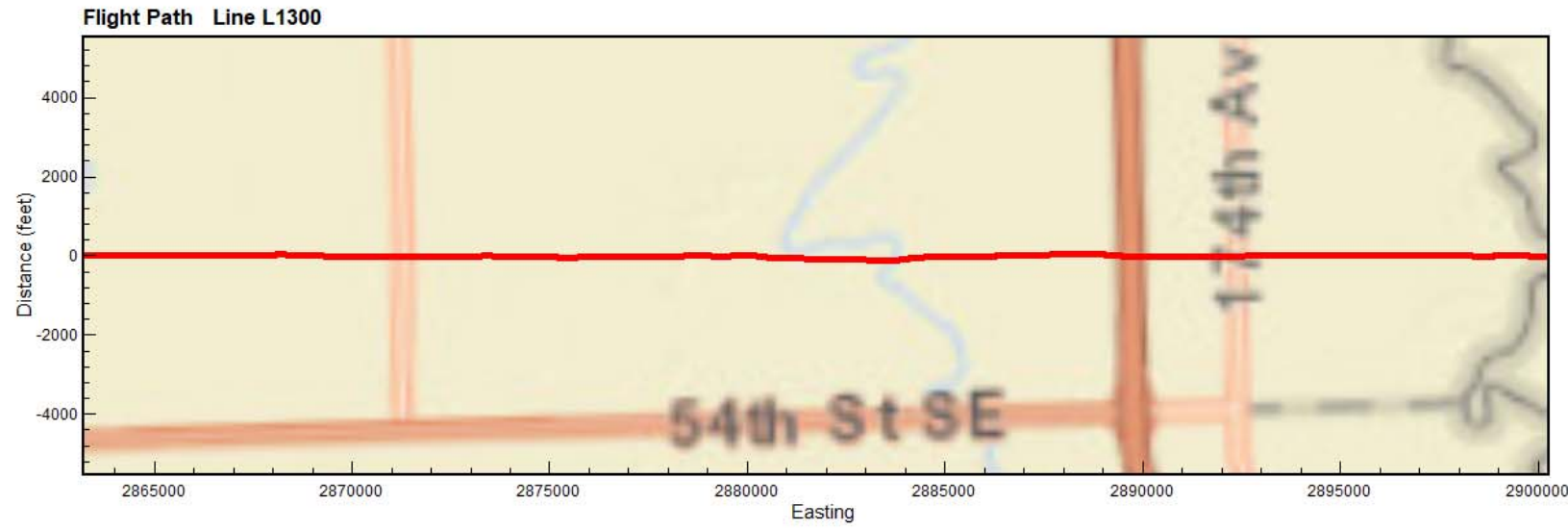
Gray dashed lines are the Upper and Lower Depth of Investigation

Boreholes plotted within 1/4 mile of flight line



Map projection NAD83 State Plane North Dakota South (Int. foot), NAVD88 (feet)

Results of the final inversion of Airborne Electromagnetic (AEM) data collected along flight lines within the Wahpeton AEM flight area from November 7-18, 2017. The inversions shown are Spatially-Constrained using the Aarhus Geo Software Workbench versions 5.6.2.0. Boreholes are from the North Dakota State Water Commission Mapservice download on November 6, 2017. Prepared for the North Dakota State Water Commission under contract to Geotech LTD by Aqua Geo Frameworks, LLC.



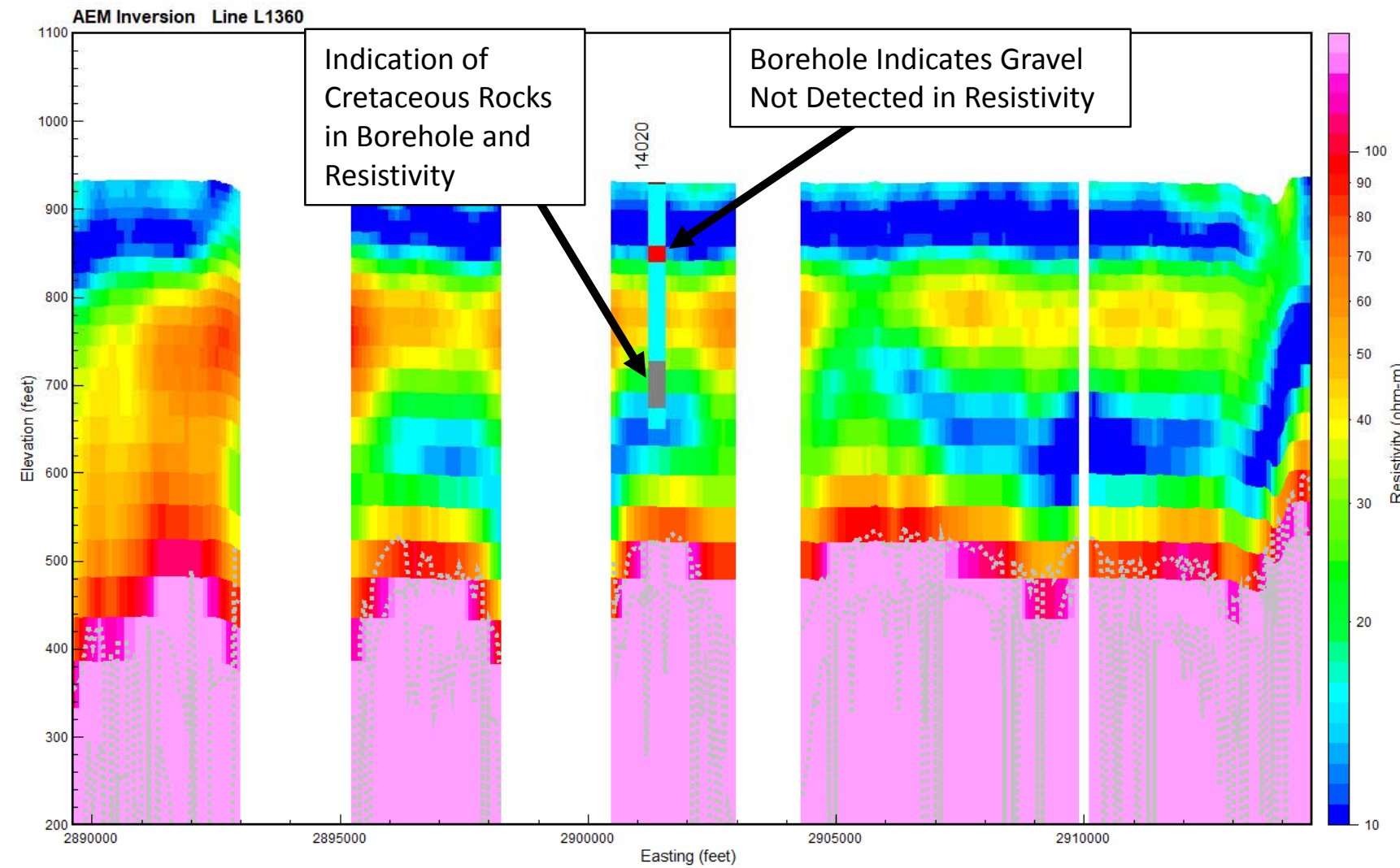
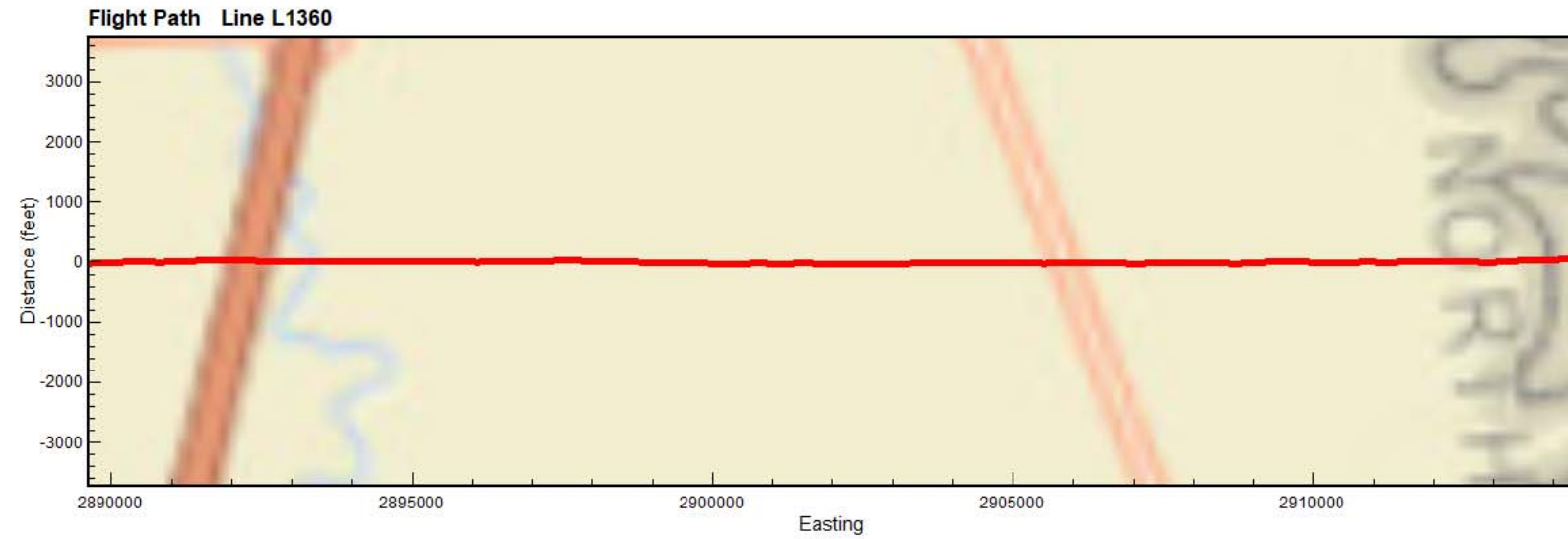
Gray dashed lines are the Upper and Lower Depth of Investigation

Boreholes plotted within 1/4 mile of flight line

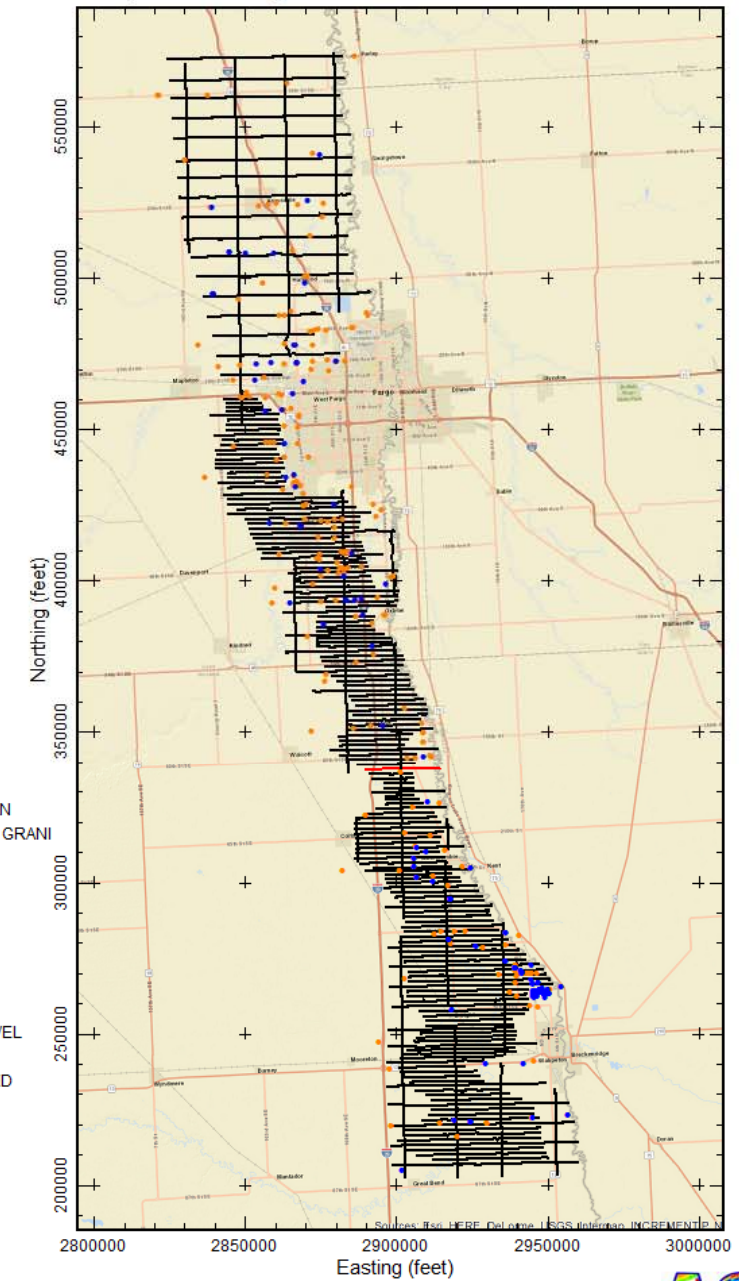
Map projection NAD83 State Plane North Dakota South (Int. foot), NAVD88 (feet)



Results of the final inversion of Airborne Electromagnetic (AEM) data collected along flight lines within the Wahpeton AEM flight area from November 7-18, 2017. The inversions shown are Spatially-Constrained using the Aarhus Geo Software Workbench versions 5.6.2.0. Boreholes are from the North Dakota State Water Commission Mapservice download on November 6, 2017. Prepared for the North Dakota State Water Commission under contract to Geotech LTD by Aqua Geo Frameworks, LLC.



Wahpeton AEM Flight Area



- PEAT
- LIGNITE
- COBBLES
- BOULDER
- ROCK
- PRECAMBRIAN
- WEATHERED GRANI
- SANDSTONE
- LIMESTONE
- SILTSTONE
- CLAYSTONE
- SHALE
- BEDROCK
- GRAVEL
- SAND & GRAVEL
- SAND
- INTERBEDDED
- SILT
- CLAY
- TILL
- FILL
- TOPSOIL
- NOSAMPLE

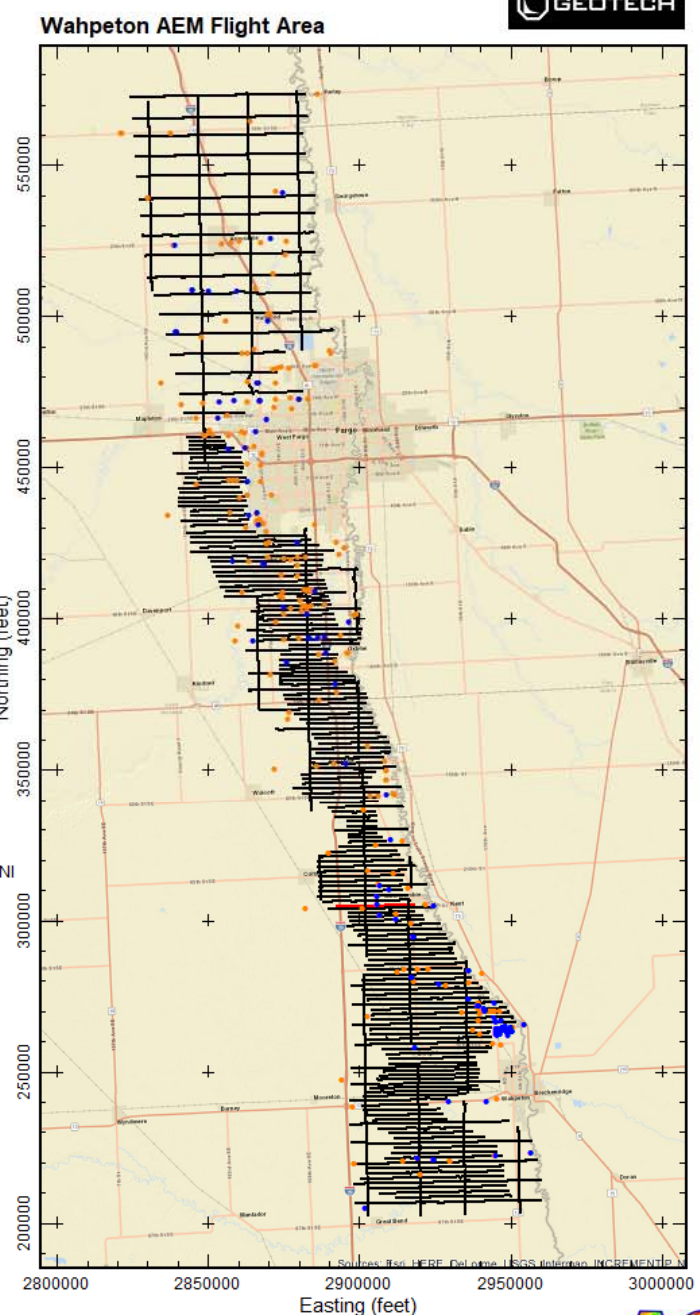
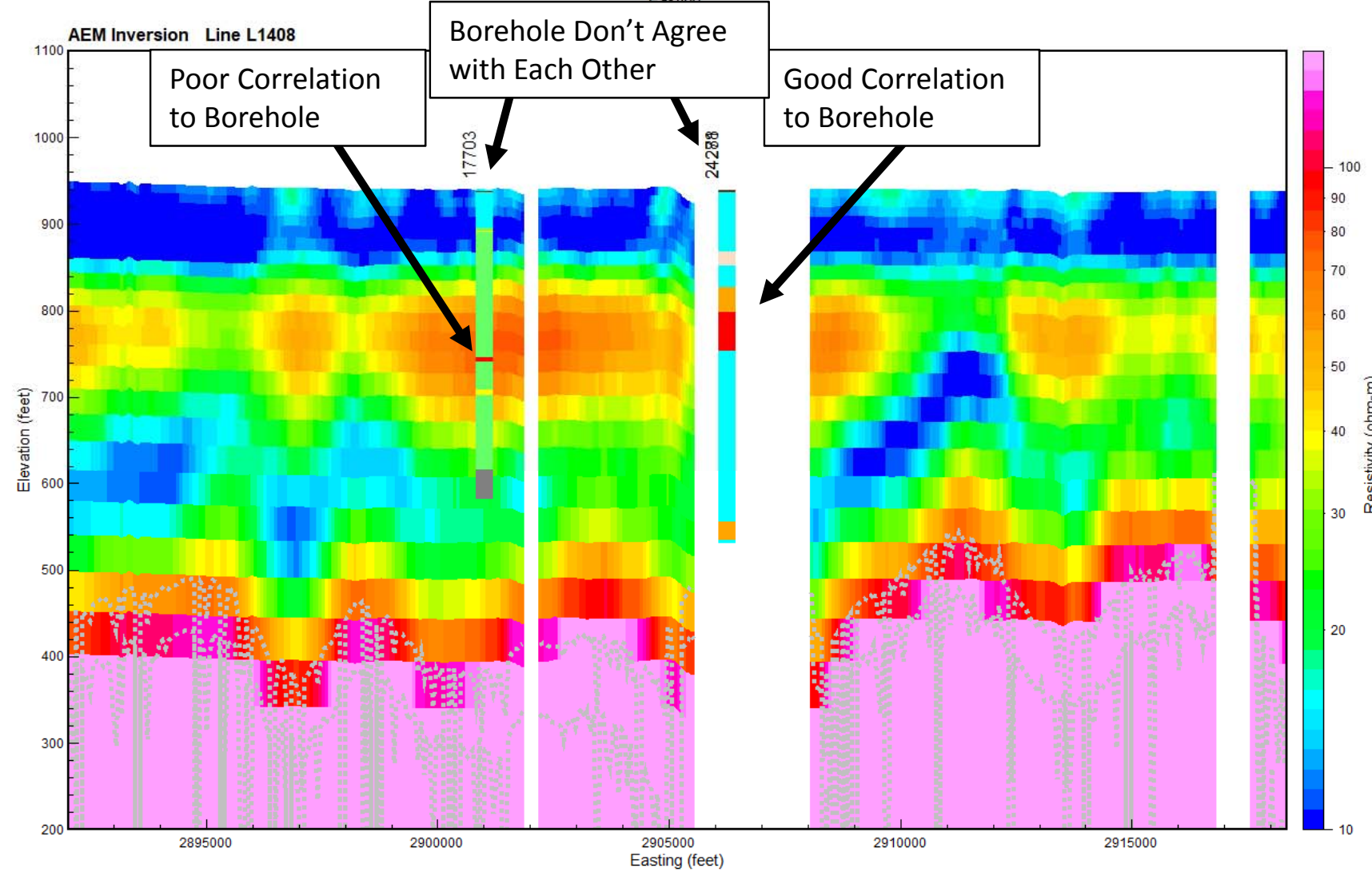
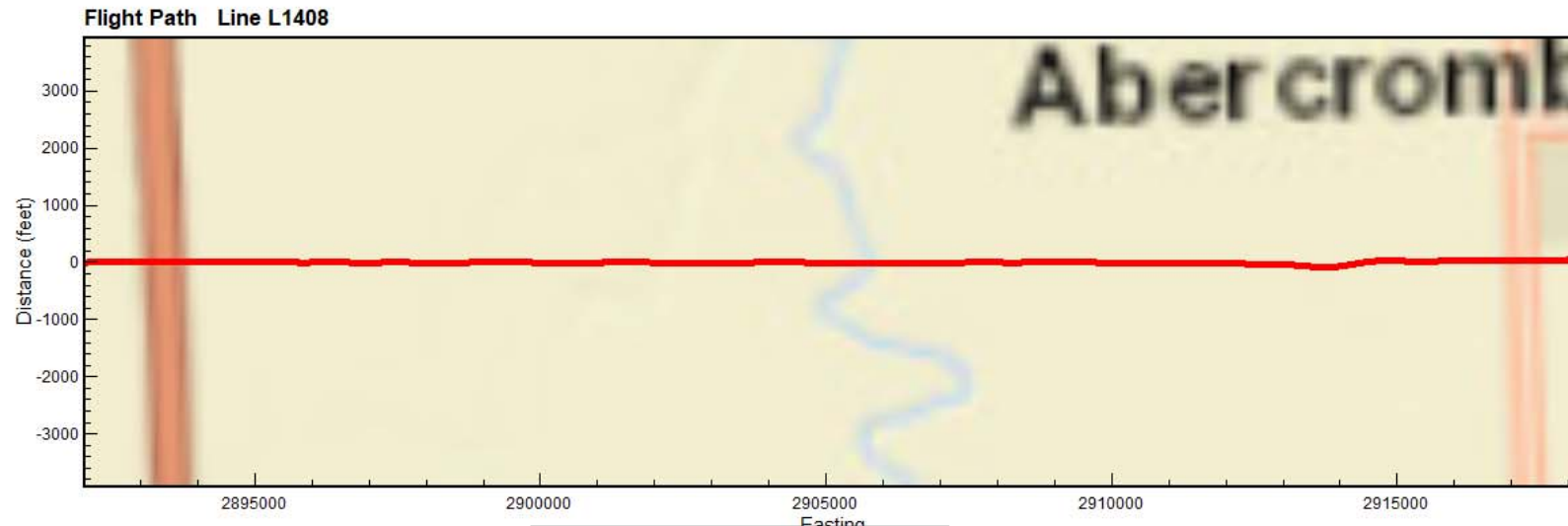
Gray dashed lines are the Upper and Lower Depth of Investigation

Boreholes plotted within 1/4 mile of flight line

Map projection NAD83 State Plane North Dakota South (Int. foot), NAVD88 (feet)



Results of the final inversion of Airborne Electromagnetic (AEM) data collected along flight lines within the Wahpeton AEM flight area from November 7-18, 2017. The inversions shown are Spatially-Constrained using the Aarhus Geo Software Workbench versions 5.6.2.0. Boreholes are from the North Dakota State Water Commission Mapservice download on November 6, 2017. Prepared for the North Dakota State Water Commission under contract to Geotech LTD by Aqua Geo Frameworks, LLC.



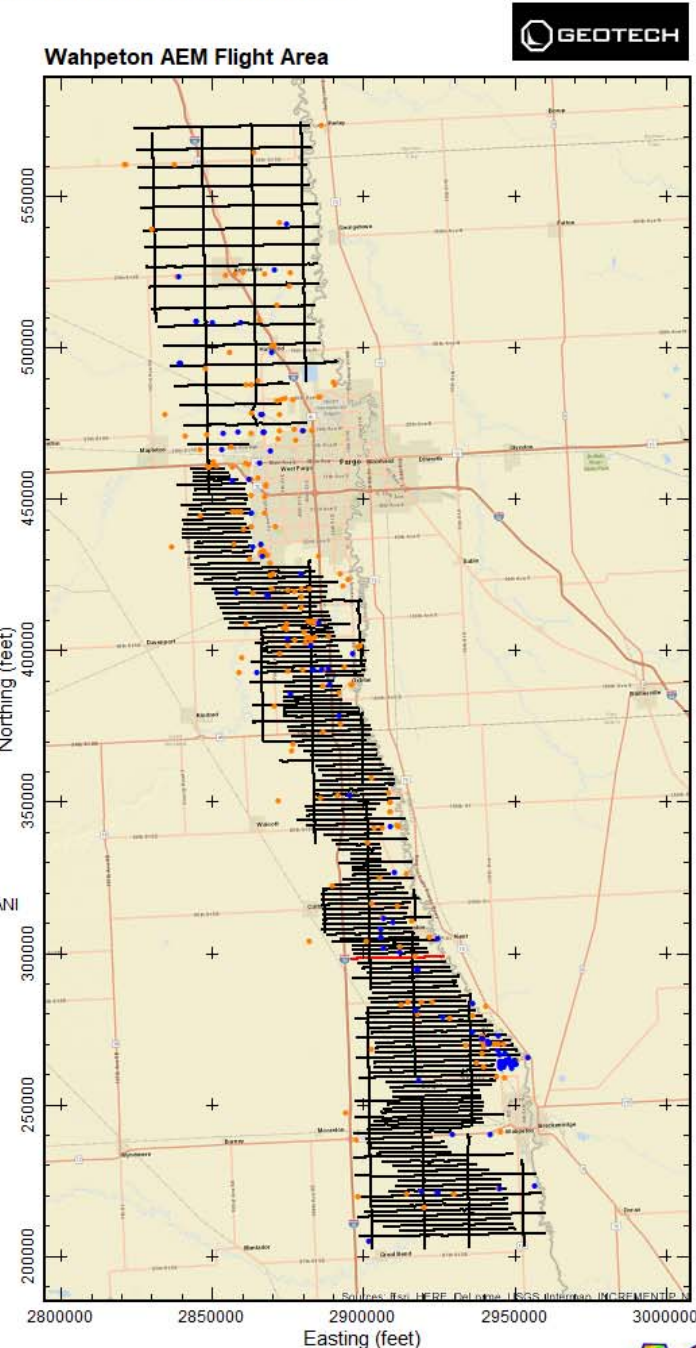
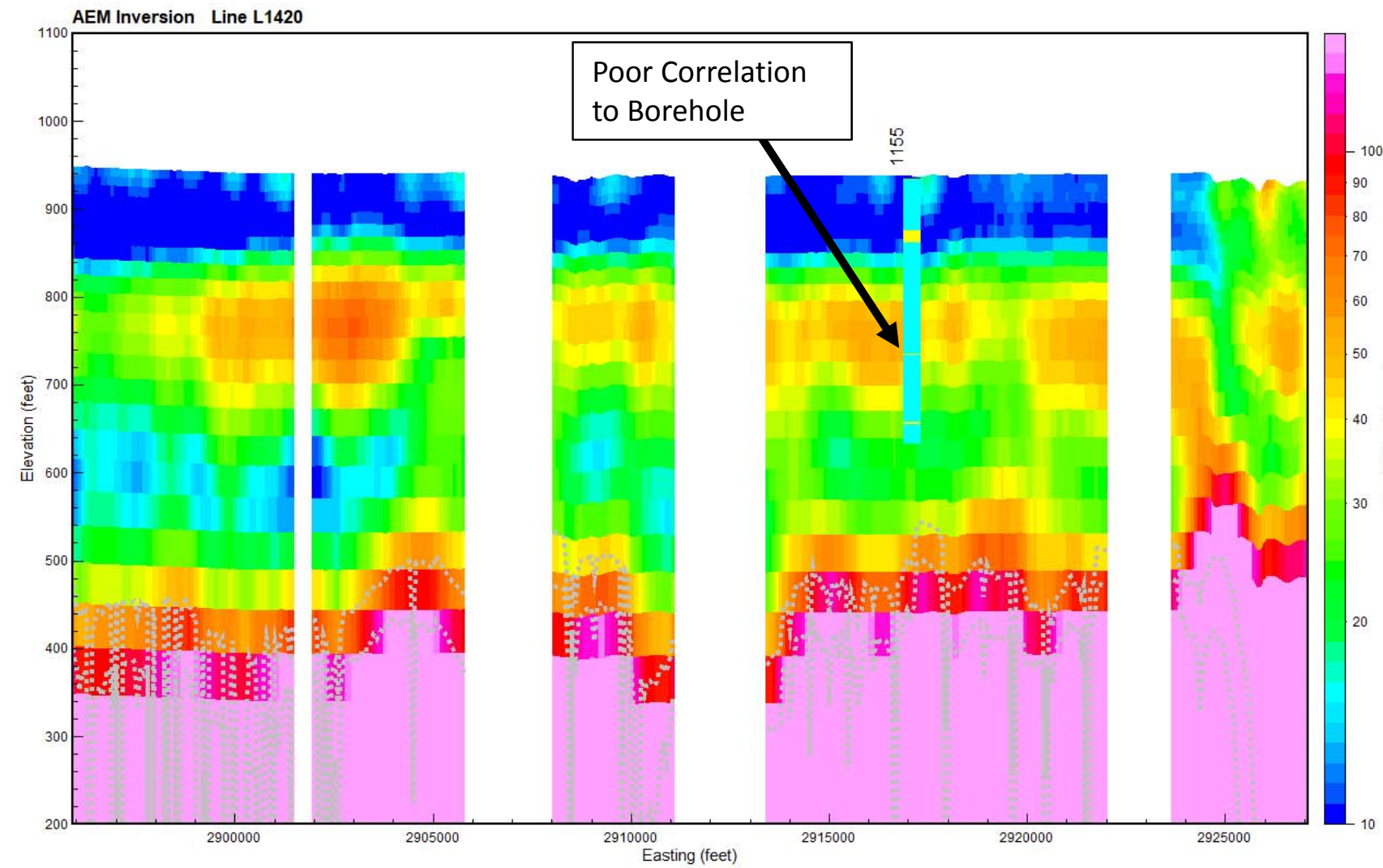
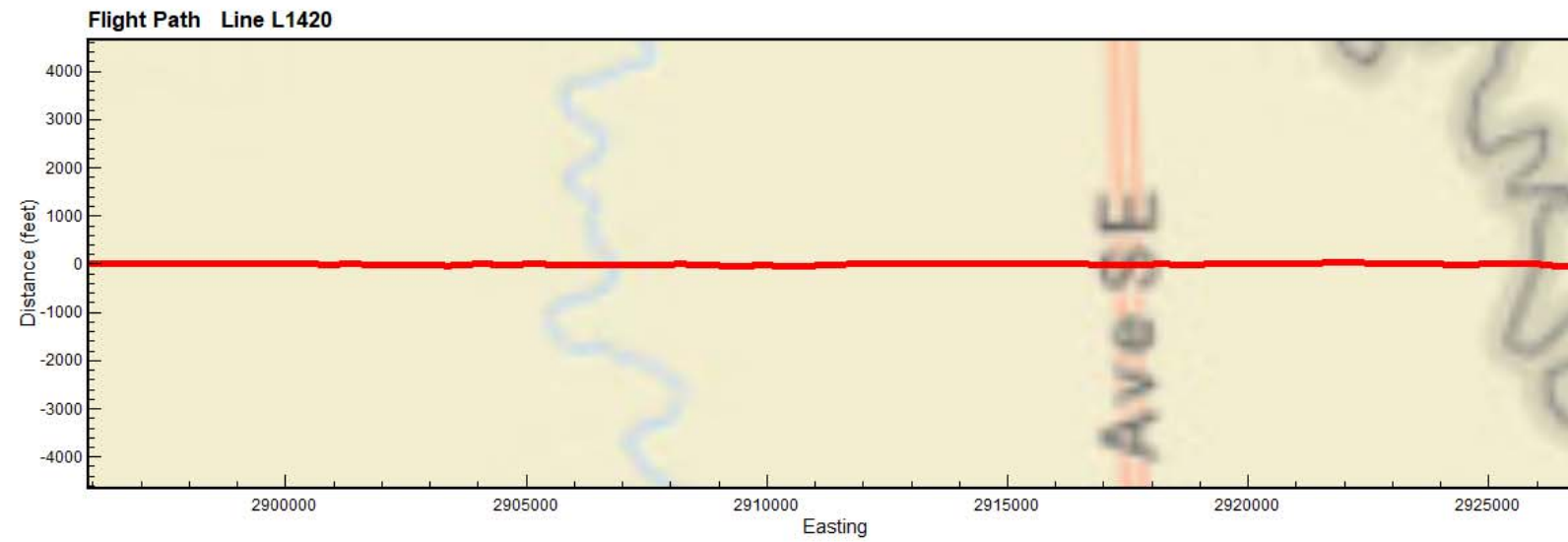
Gray dashed lines are the Upper and Lower Depth of Investigation

Boreholes plotted within 1/4 mile of flight line

Map projection NAD83 State Plane North Dakota South (Int. foot), NAVD88 (feet)



Results of the final inversion of Airborne Electromagnetic (AEM) data collected along flight lines within the Wahpeton AEM flight area from November 7-18, 2017. The inversions shown are Spatially-Constrained using the Aarhus Geo Software Workbench versions 5.6.2.0. Boreholes are from the North Dakota State Water Commission Mapservice download on November 6, 2017. Prepared for the North Dakota State Water Commission under contract to Geotech LTD by Aqua Geo Frameworks, LLC.

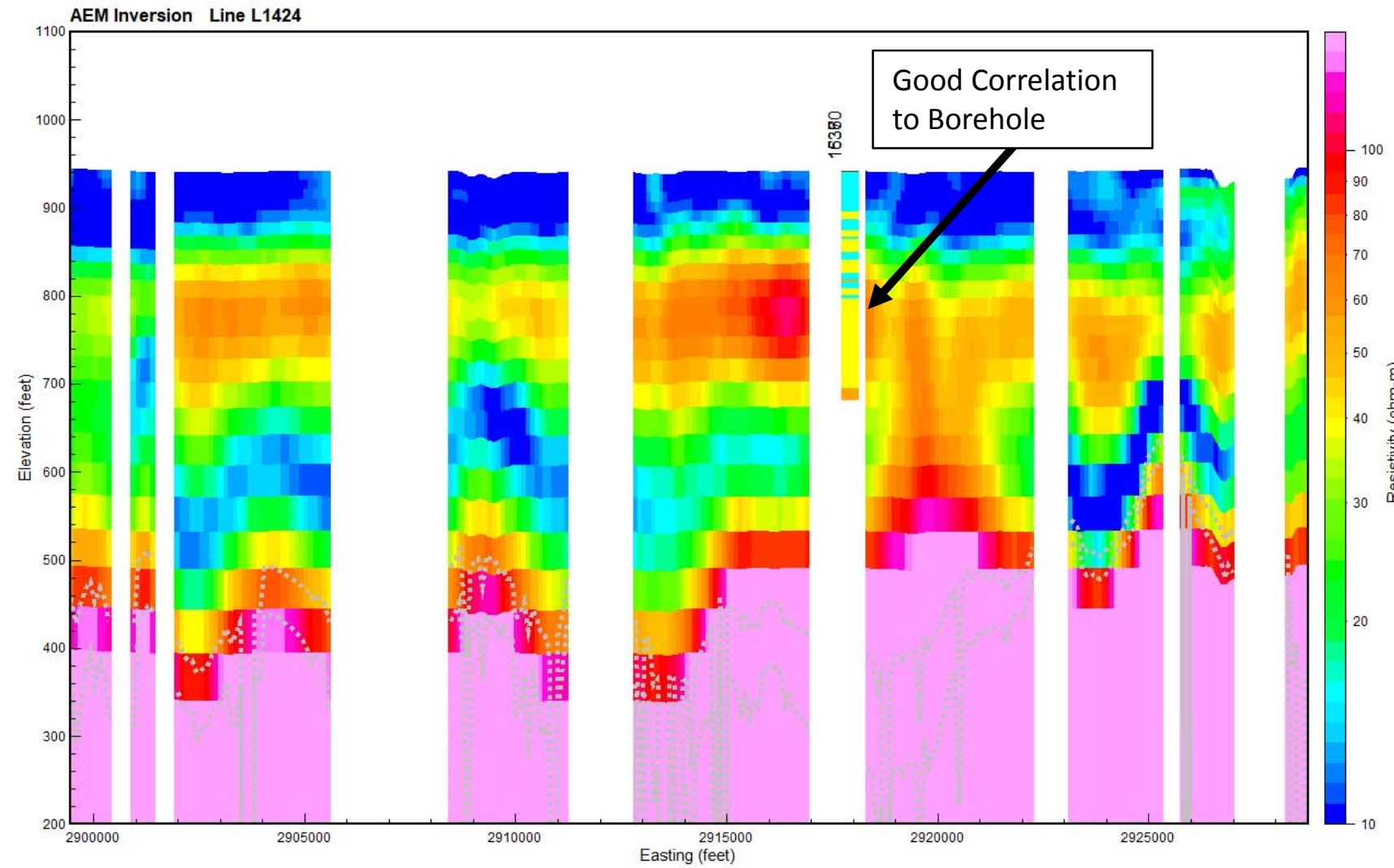
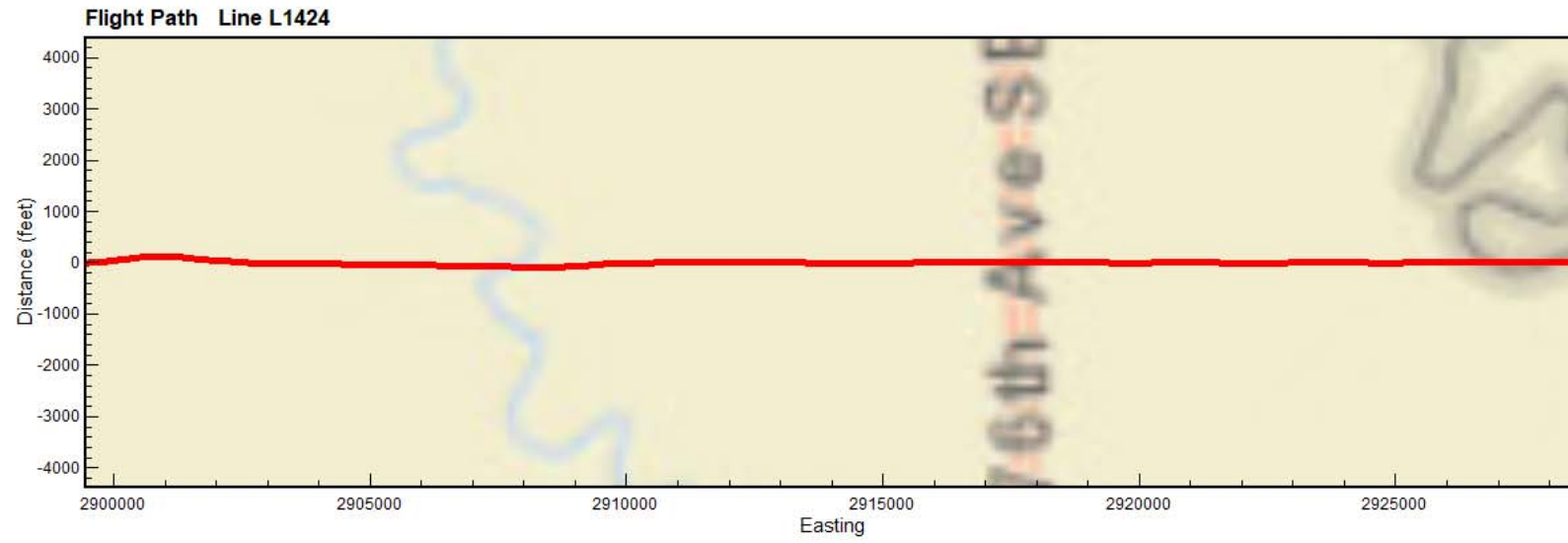


Gray dashed lines are the Upper and Lower Depth of Investigation

Boreholes plotted within 1/4 mile of flight line

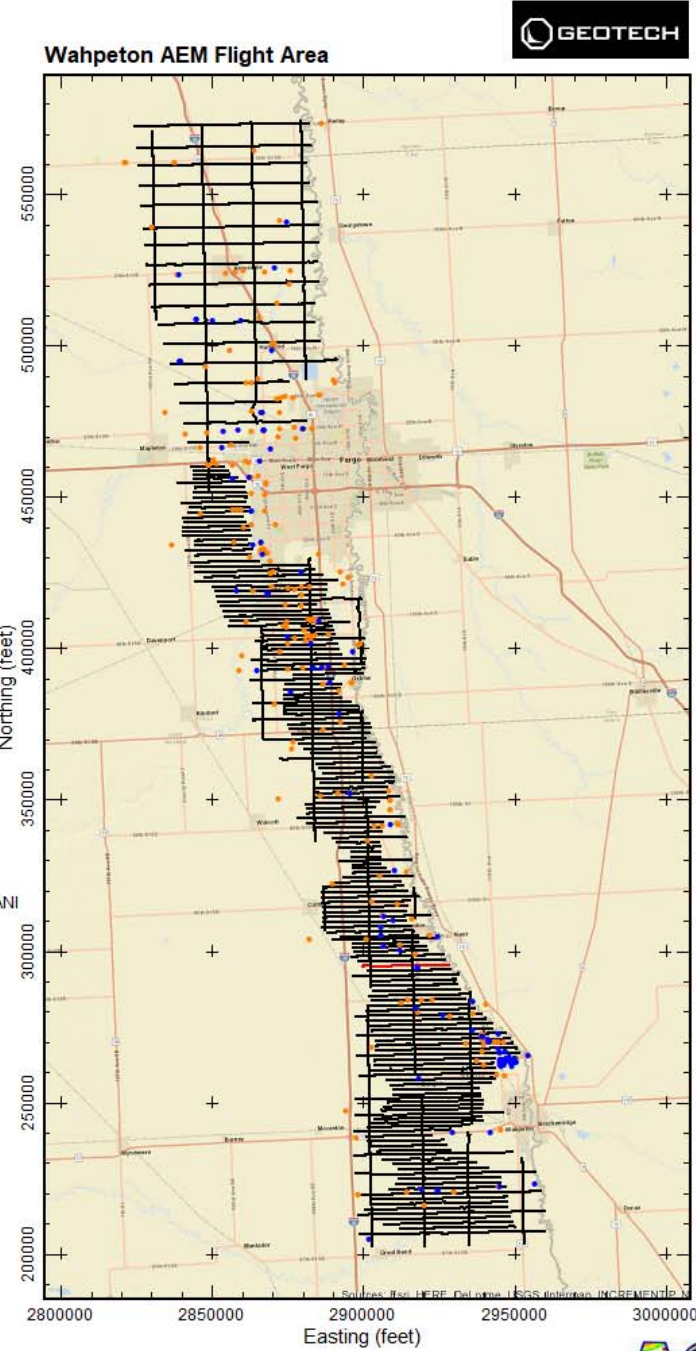
Map projection NAD83 State Plane North Dakota South (Int. foot), NAVD88 (feet)

Results of the final inversion of Airborne Electromagnetic (AEM) data collected along flight lines within the Wahpeton AEM flight area from November 7-18, 2017. The inversions shown are Spatially-Constrained using the Aarhus Geo Software Workbench versions 5.6.2.0. Boreholes are from the North Dakota State Water Commission Mapservice download on November 6, 2017. Prepared for the North Dakota State Water Commission under contract to Geotech LTD by Aqua Geo Frameworks, LLC.



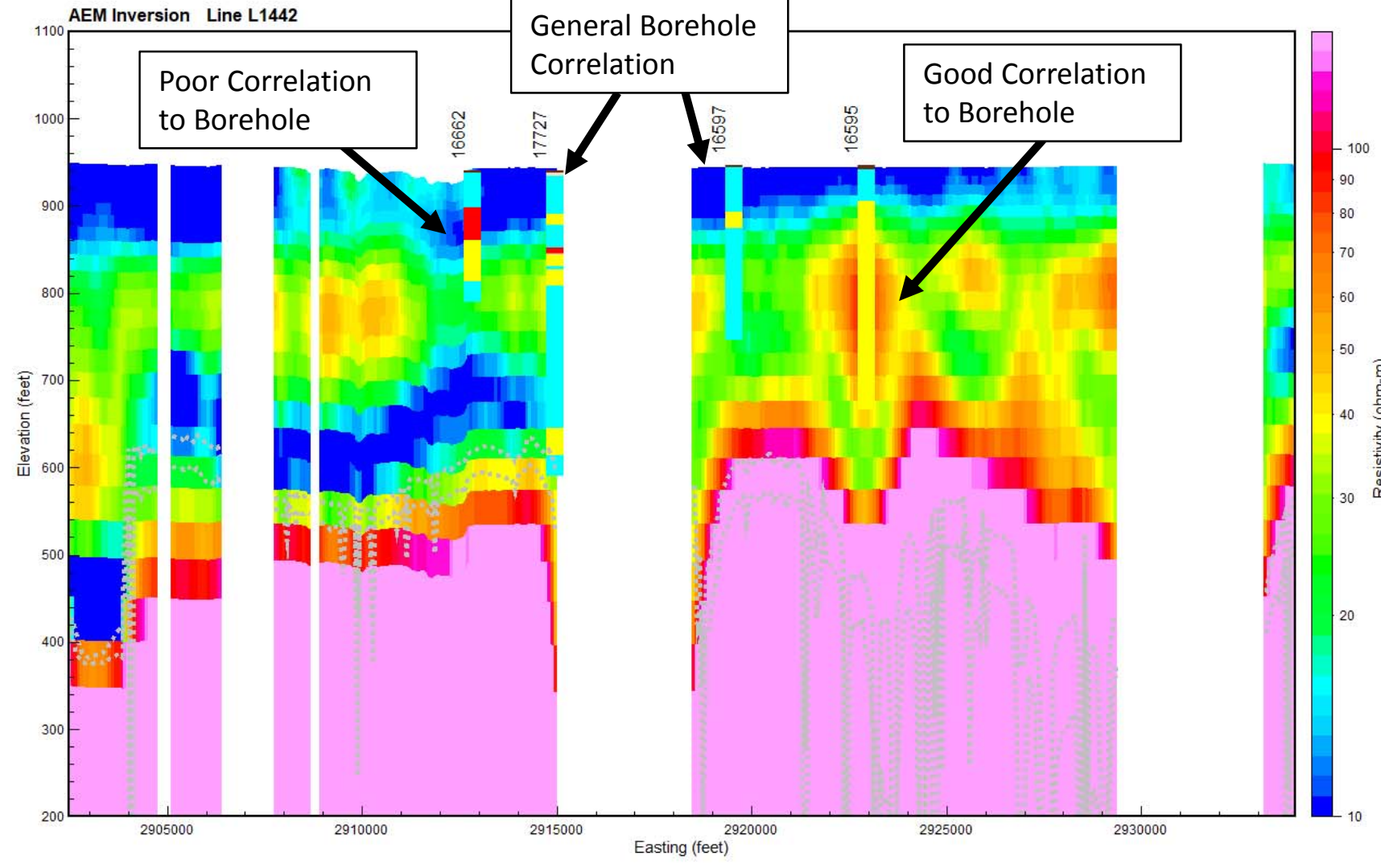
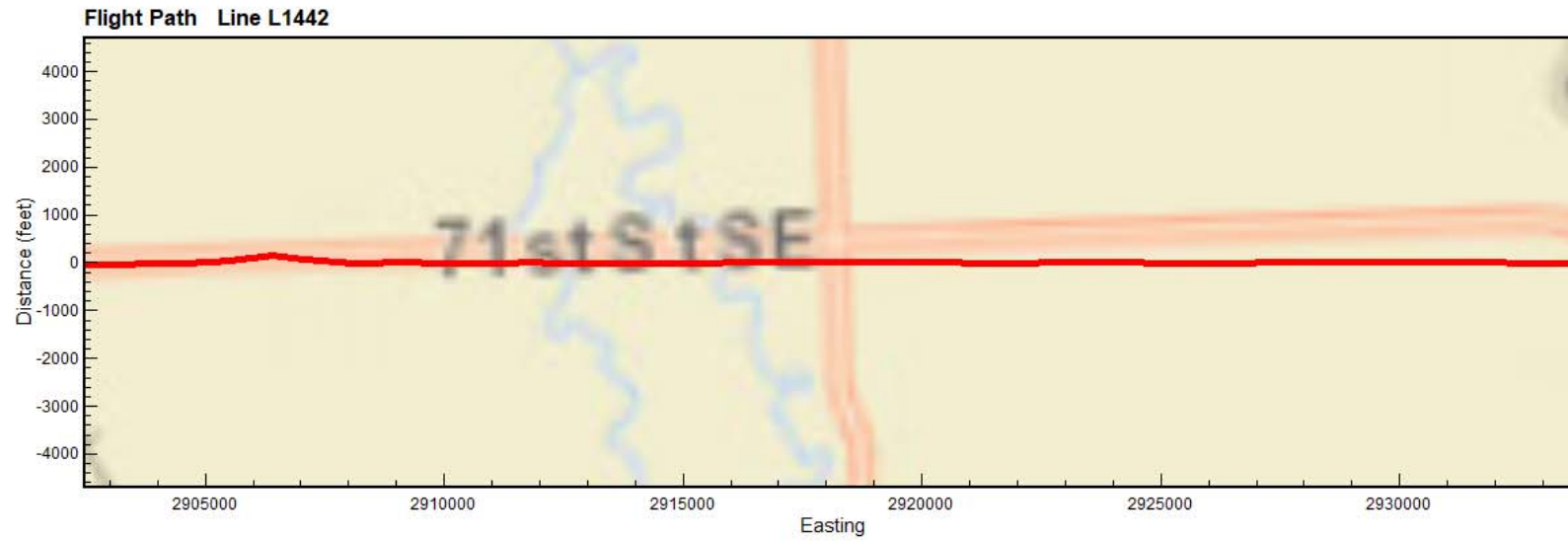
Gray dashed lines are the Upper and Lower Depth of Investigation

Boreholes plotted within 1/4 mile of flight line



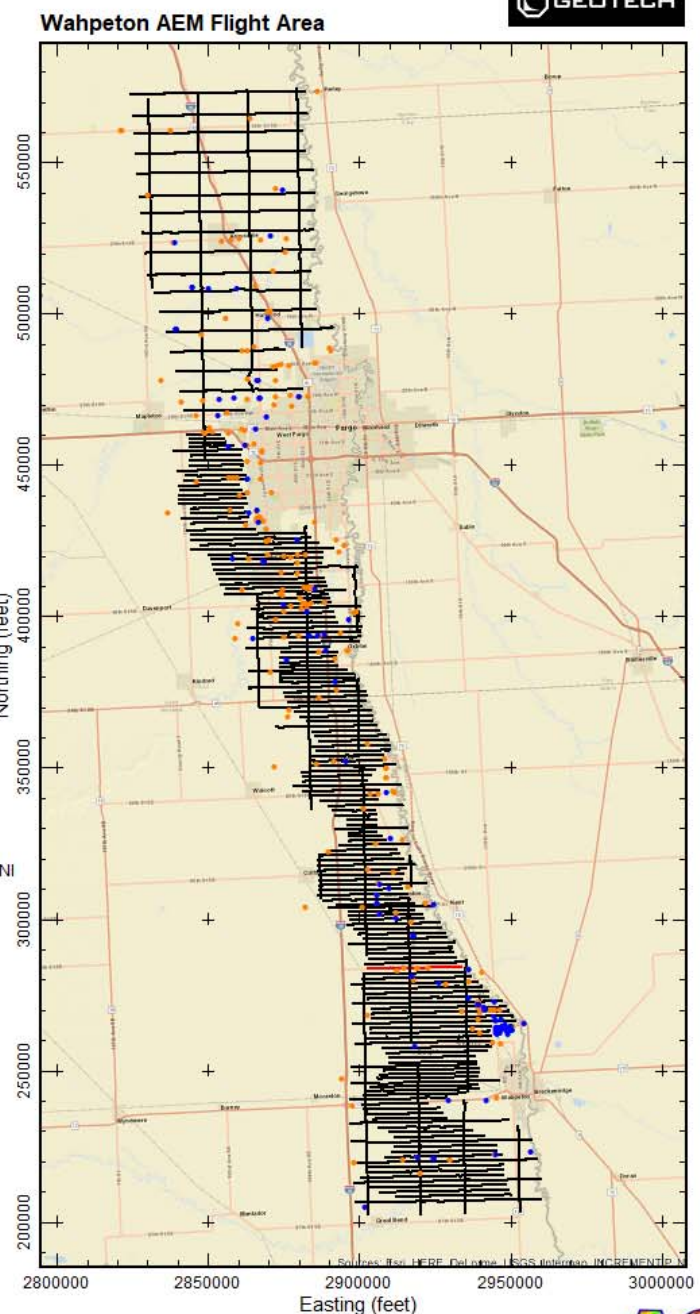
Map projection NAD83 State Plane North Dakota South (Int. foot), NAVD88 (feet)

Results of the final inversion of Airborne Electromagnetic (AEM) data collected along flight lines within the Wahpeton AEM flight area from November 7-18, 2017. The inversions shown are Spatially-Constrained using the Aarhus Geo Software Workbench versions 5.6.2.0. Boreholes are from the North Dakota State Water Commission Mapservice download on November 6, 2017. Prepared for the North Dakota State Water Commission under contract to Geotech LTD by Aqua Geo Frameworks, LLC.



Gray dashed lines are the Upper and Lower Depth of Investigation

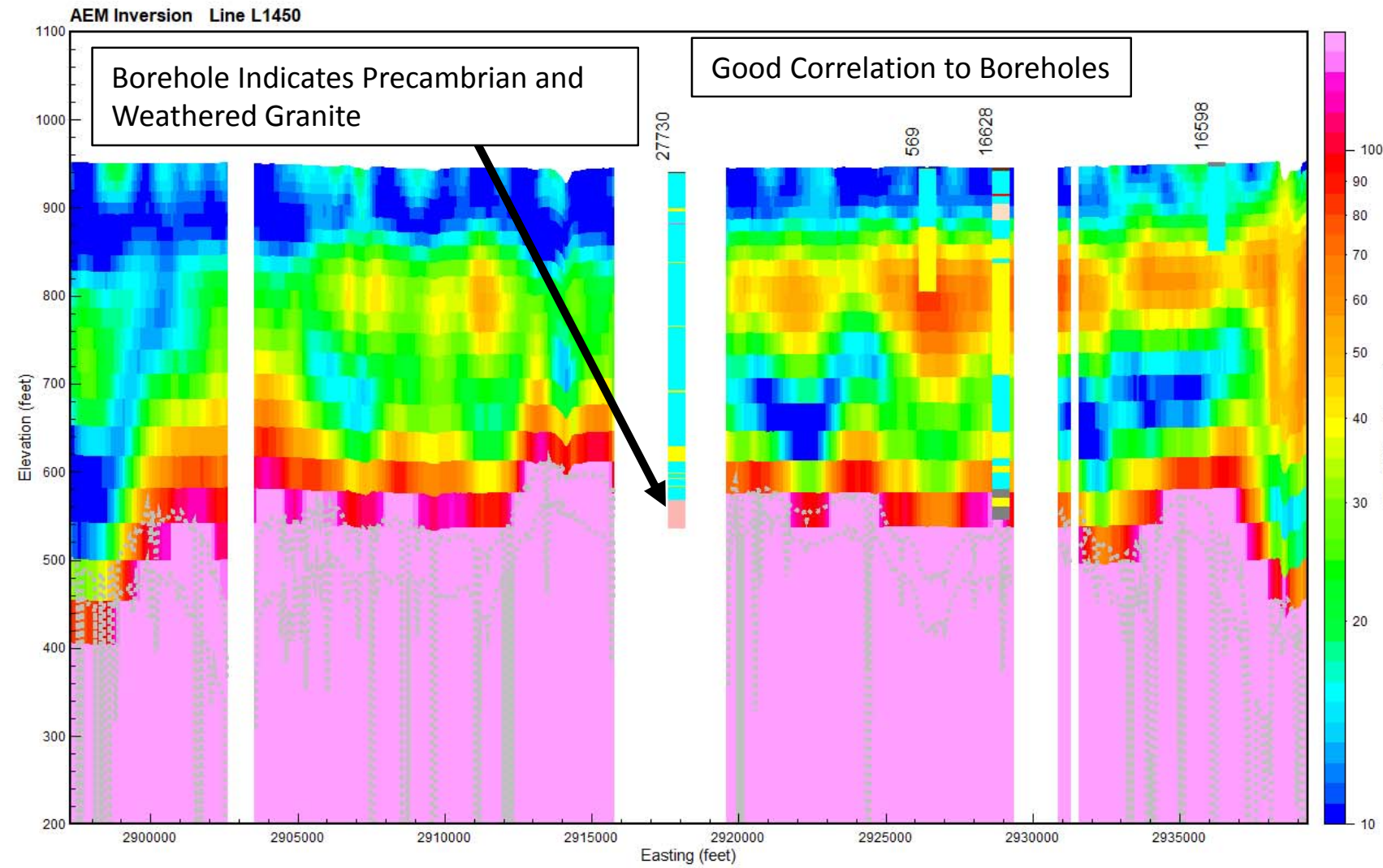
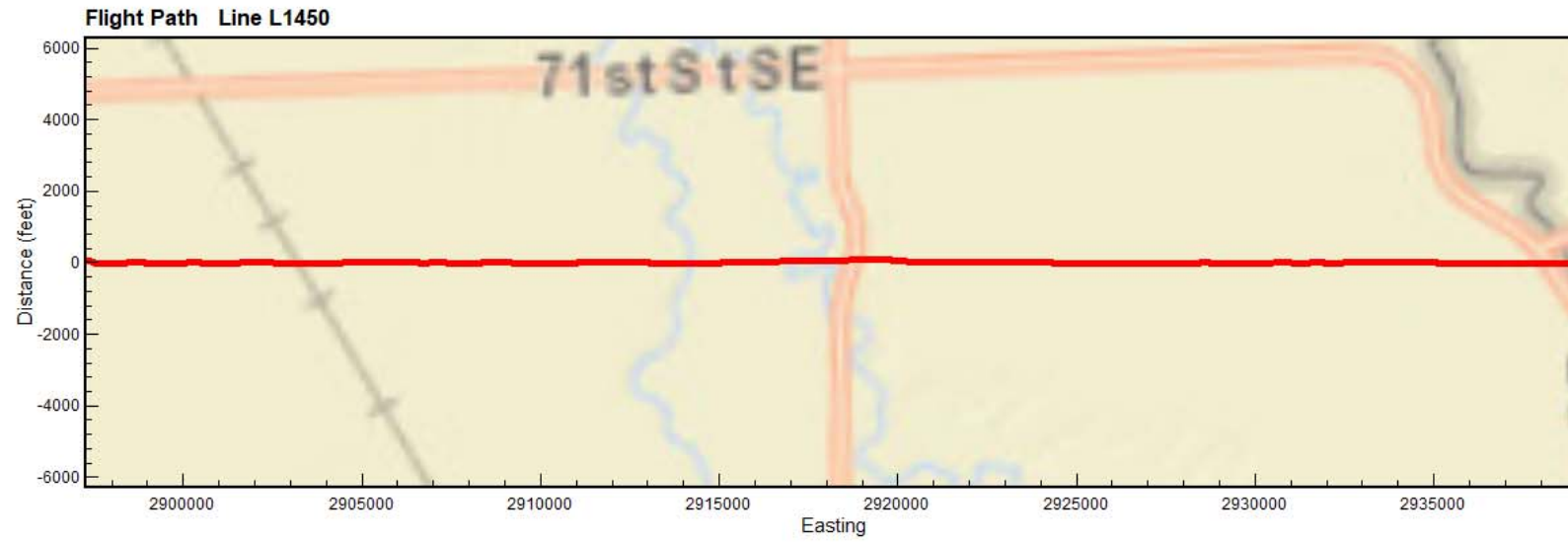
Boreholes plotted within 1/4 mile of flight line



Map projection NAD83 State Plane North Dakota South (Int. foot), NAVD88 (feet)

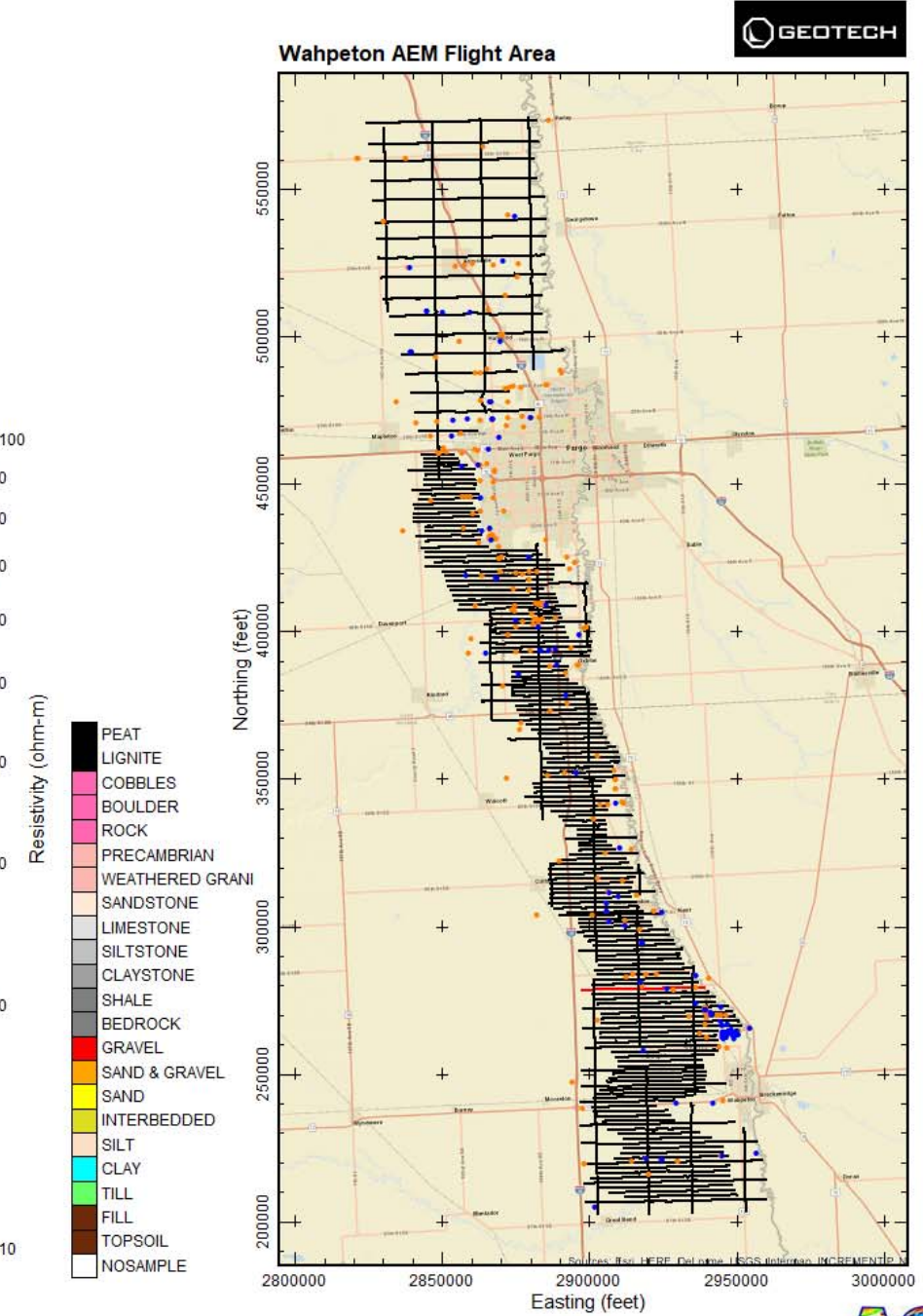
- PEAT
- LIGNITE
- COBBLES
- BOULDER
- ROCK
- PRECAMBRIAN
- WEATHERED GRANI
- SANDSTONE
- LIMESTONE
- SILTSTONE
- CLAYSTONE
- SHALE
- BEDROCK
- GRAVEL
- SAND & GRAVEL
- SAND
- INTERBEDDED
- SILT
- CLAY
- TILL
- FILL
- TOPSOIL
- NOSAMPLE

Results of the final inversion of Airborne Electromagnetic (AEM) data collected along flight lines within the Wahpeton AEM flight area from November 7-18, 2017. The inversions shown are Spatially-Constrained using the Aarhus Geo Software Workbench versions 5.6.2.0. Boreholes are from the North Dakota State Water Commission Mapservice download on November 6, 2017. Prepared for the North Dakota State Water Commission under contract to Geotech LTD by Aqua Geo Frameworks, LLC.



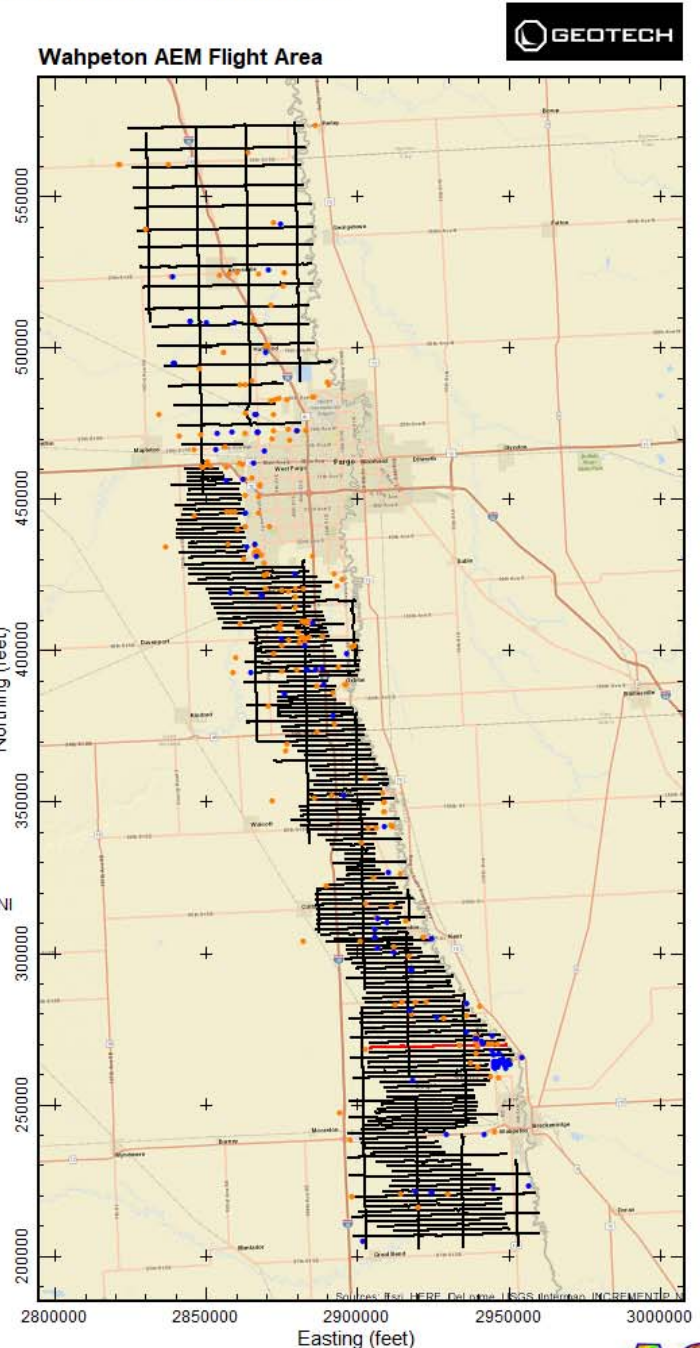
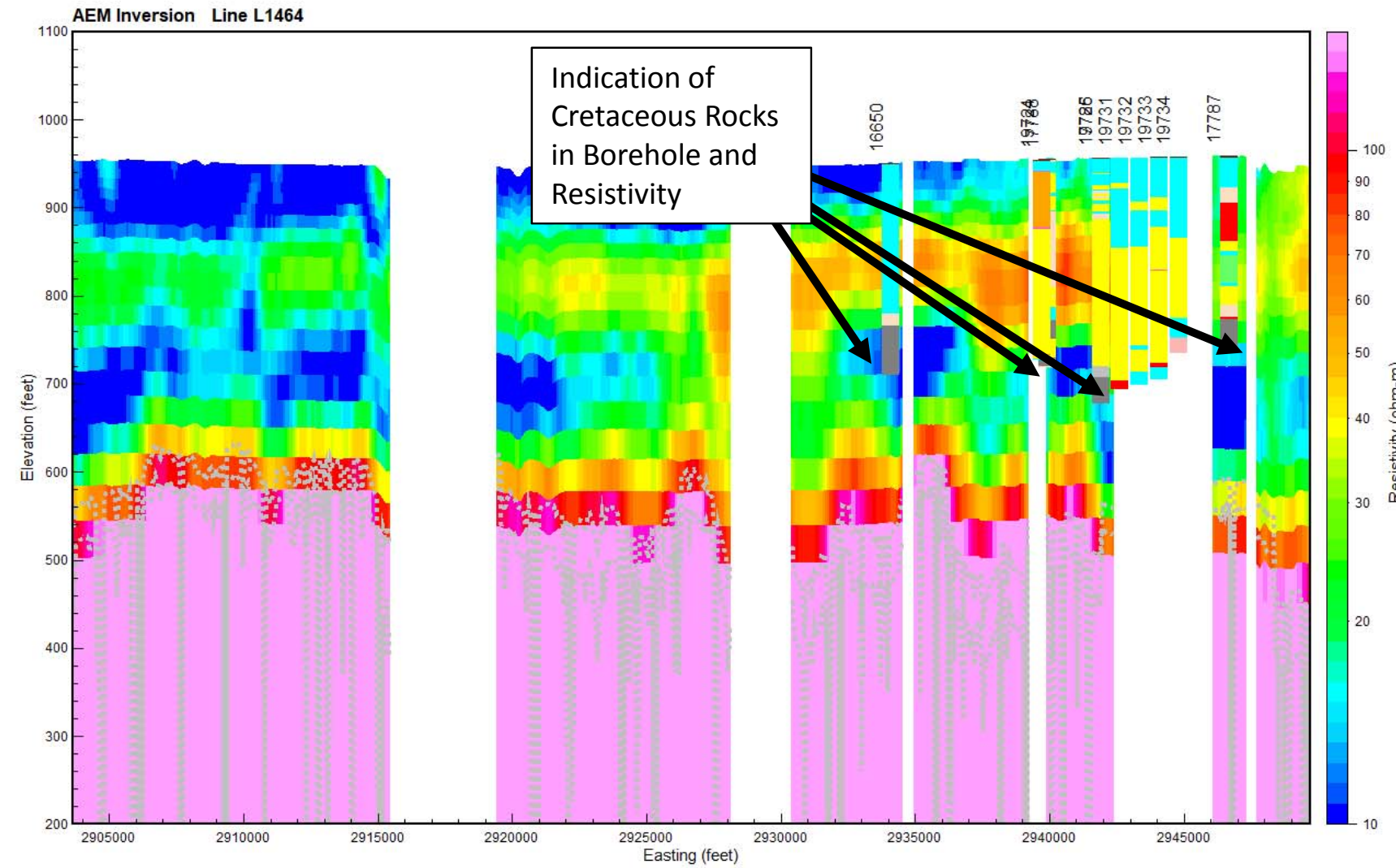
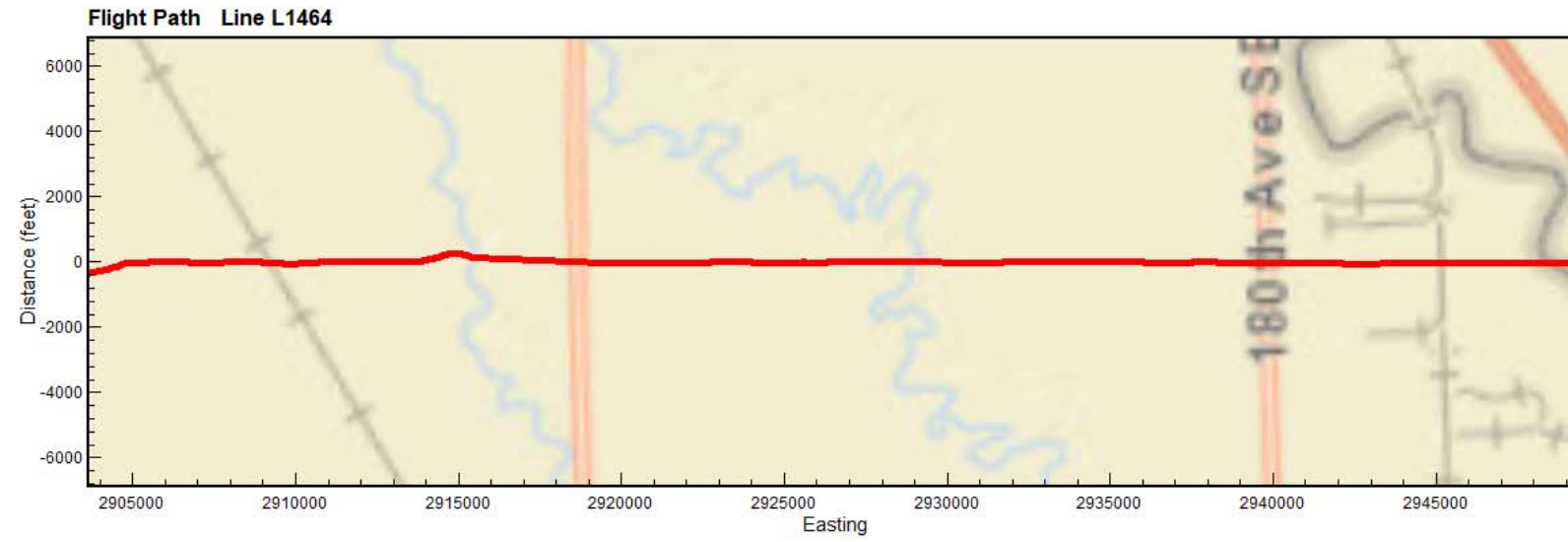
Gray dashed lines are the Upper and Lower Depth of Investigation

Boreholes plotted within 1/4 mile of flight line



Map projection NAD83 State Plane North Dakota South (Int. foot), NAVD88 (feet)

Results of the final inversion of Airborne Electromagnetic (AEM) data collected along flight lines within the Wahpeton AEM flight area from November 7-18, 2017. The inversions shown are Spatially-Constrained using the Aarhus Geo Software Workbench versions 5.6.2.0. Boreholes are from the North Dakota State Water Commission Mapservice download on November 6, 2017. Prepared for the North Dakota State Water Commission under contract to Geotech LTD by Aqua Geo Frameworks, LLC.

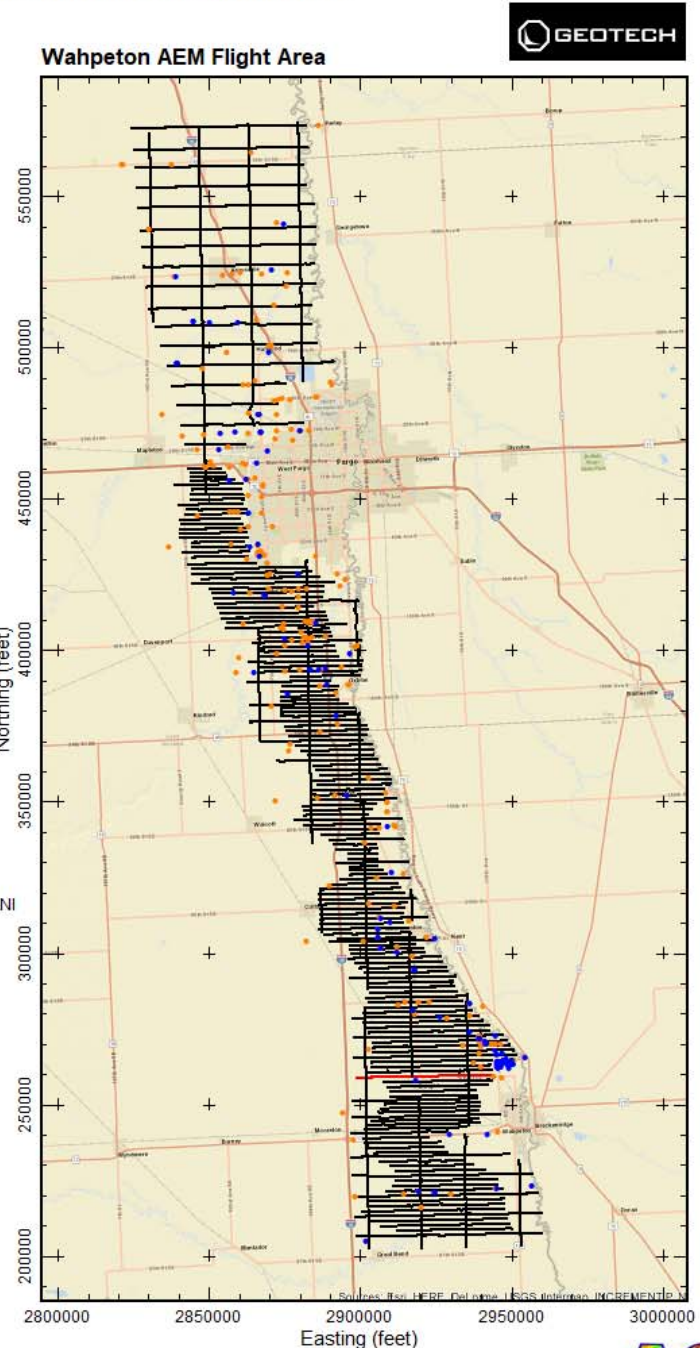
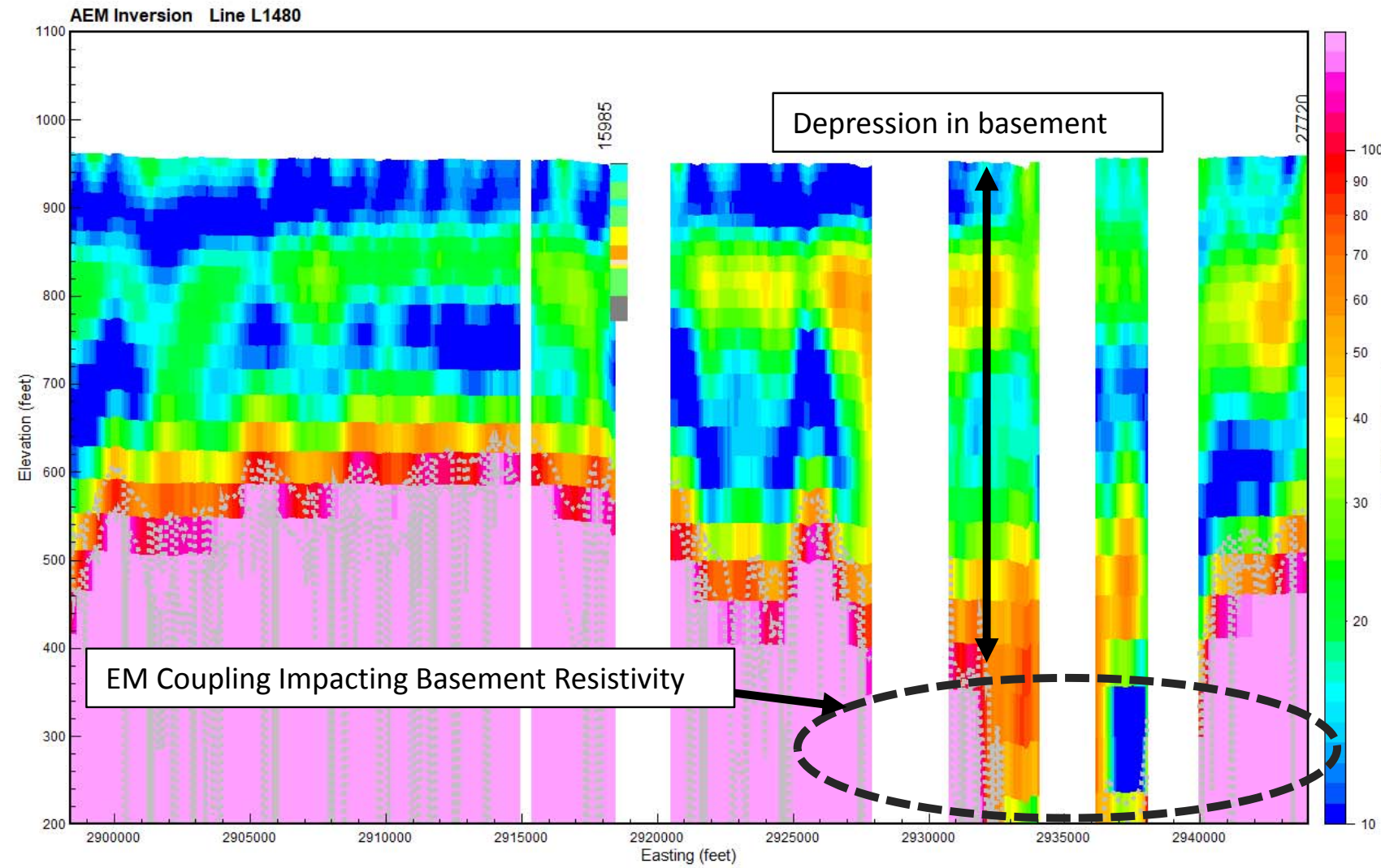
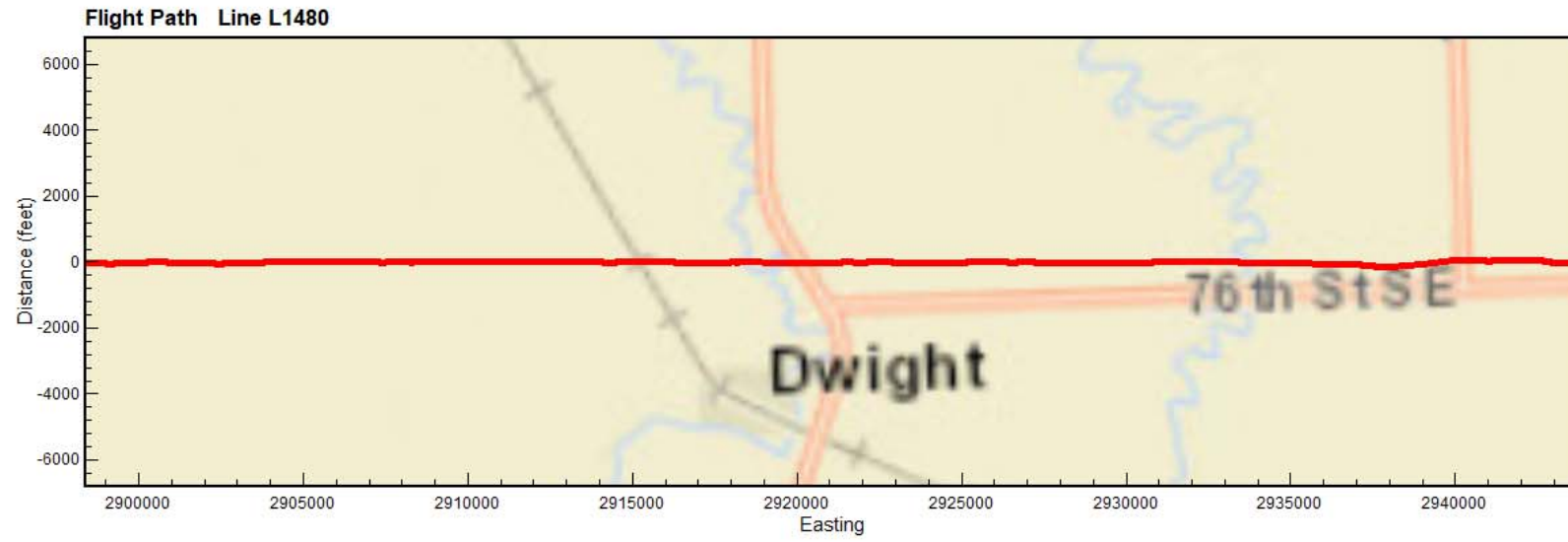


Gray dashed lines are the Upper and Lower Depth of Investigation

Boreholes plotted within 1/4 mile of flight line

Map projection NAD83 State Plane North Dakota South (Int. foot), NAVD88 (feet)

Results of the final inversion of Airborne Electromagnetic (AEM) data collected along flight lines within the Wahpeton AEM flight area from November 7-18, 2017. The inversions shown are Spatially-Constrained using the Aarhus Geo Software Workbench versions 5.6.2.0. Boreholes are from the North Dakota State Water Commission Mapservice download on November 6, 2017. Prepared for the North Dakota State Water Commission under contract to Geotech LTD by Aqua Geo Frameworks, LLC.



- PEAT
- LIGNITE
- COBBLES
- BOULDER
- ROCK
- PRECAMBRIAN
- WEATHERED GRANI
- SANDSTONE
- LIMESTONE
- SILTSTONE
- CLAYSTONE
- SHALE
- BEDROCK
- GRAVEL
- SAND & GRAVEL
- SAND
- INTERBEDDED
- SILT
- CLAY
- TILL
- FILL
- TOPSOIL
- NOSAMPLE

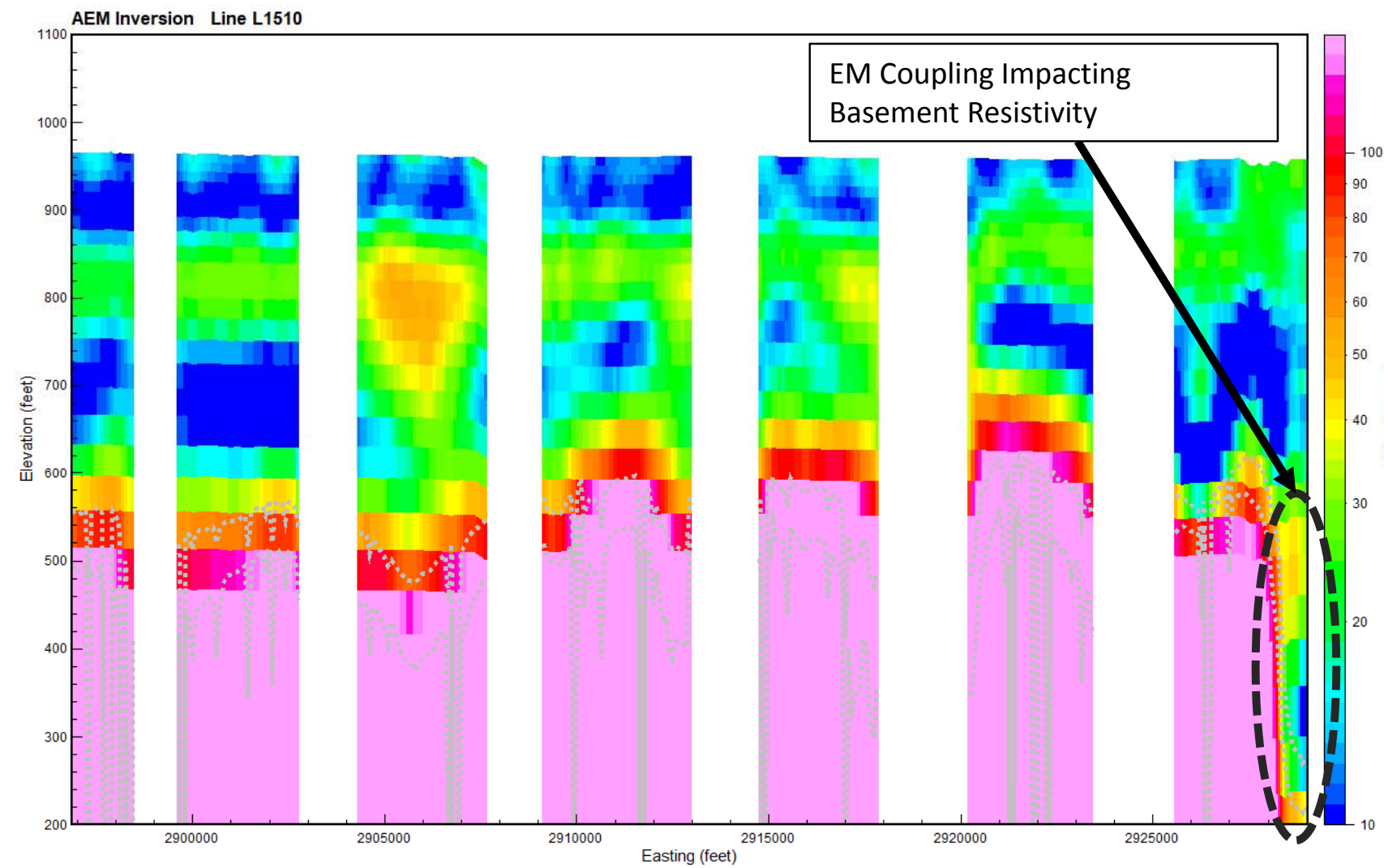
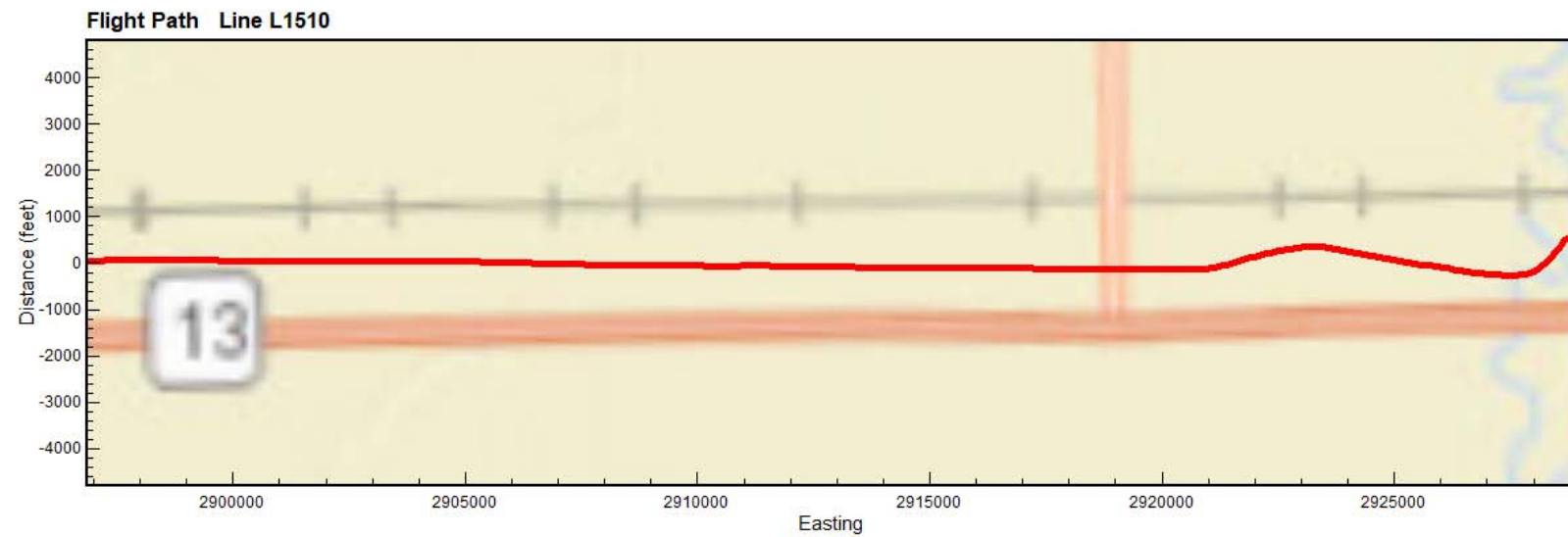
Gray dashed lines are the Upper and Lower Depth of Investigation

Boreholes plotted within 1/4 mile of flight line

Map projection NAD83 State Plane North Dakota South (Int. foot), NAVD88 (feet)

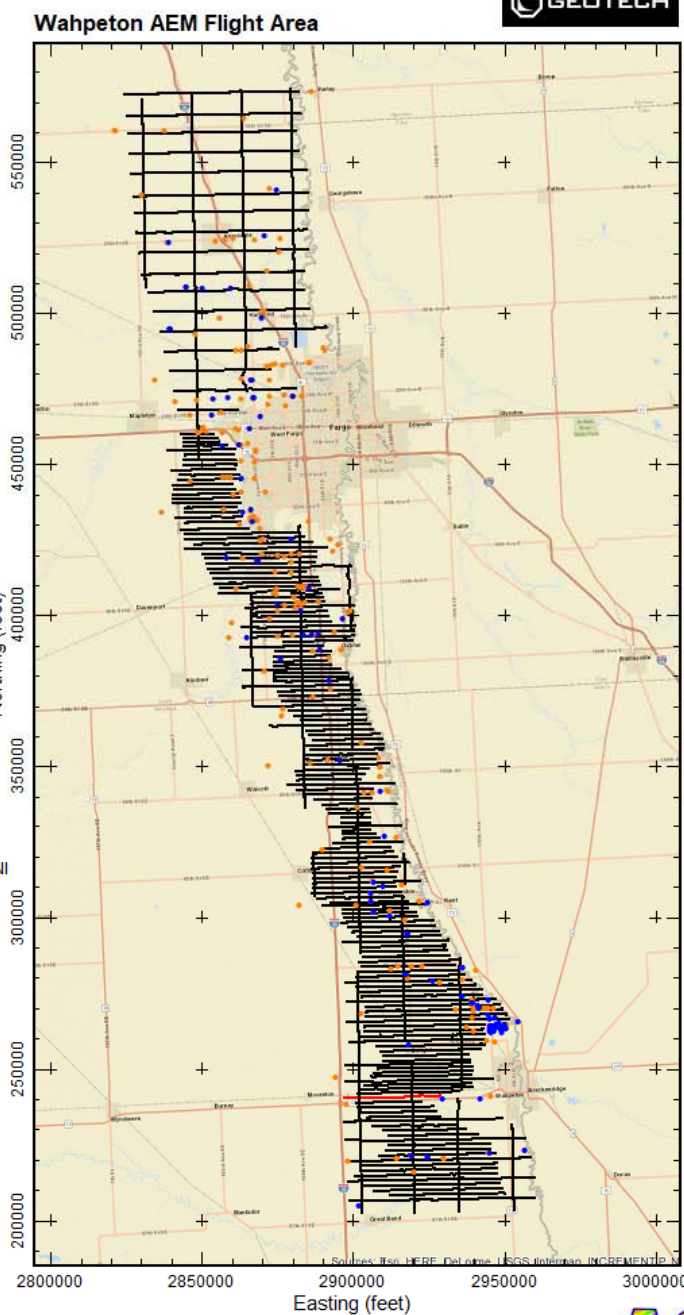


Results of the final inversion of Airborne Electromagnetic (AEM) data collected along flight lines within the Wahpeton AEM flight area from November 7-18, 2017. The inversions shown are Spatially-Constrained using the Aarhus Geo Software Workbench versions 5.6.2.0. Boreholes are from the North Dakota State Water Commission Mapservice download on November 6, 2017. Prepared for the North Dakota State Water Commission under contract to Geotech LTD by Aqua Geo Frameworks, LLC.



Gray dashed lines are the Upper and Lower Depth of Investigation

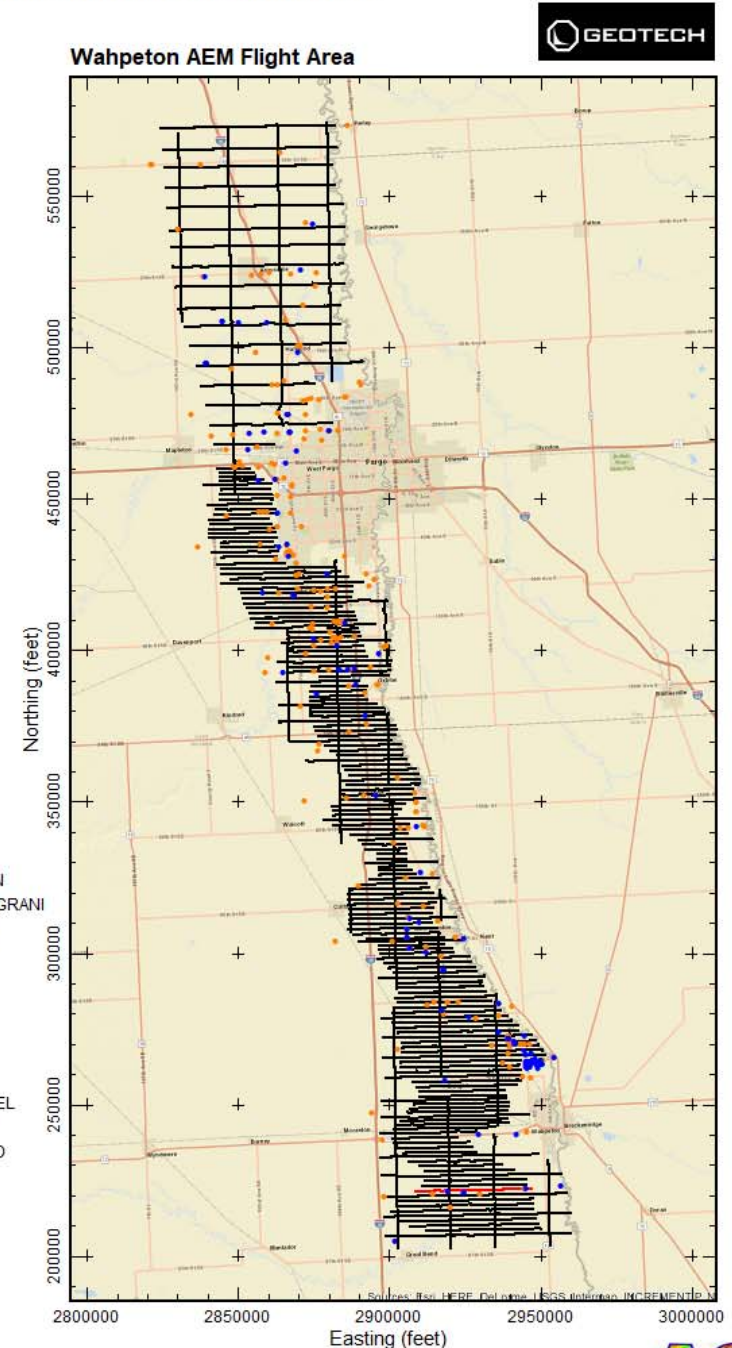
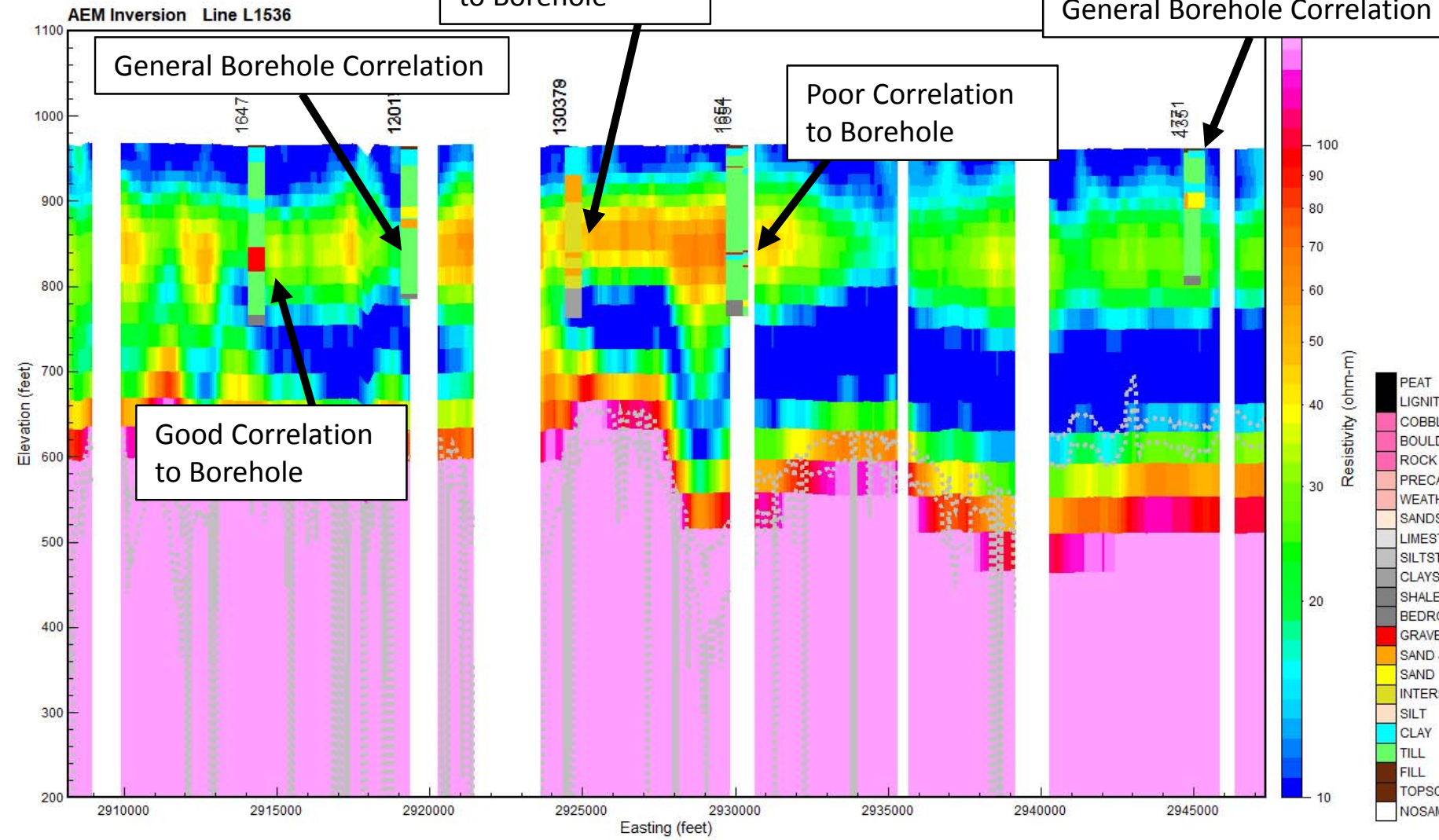
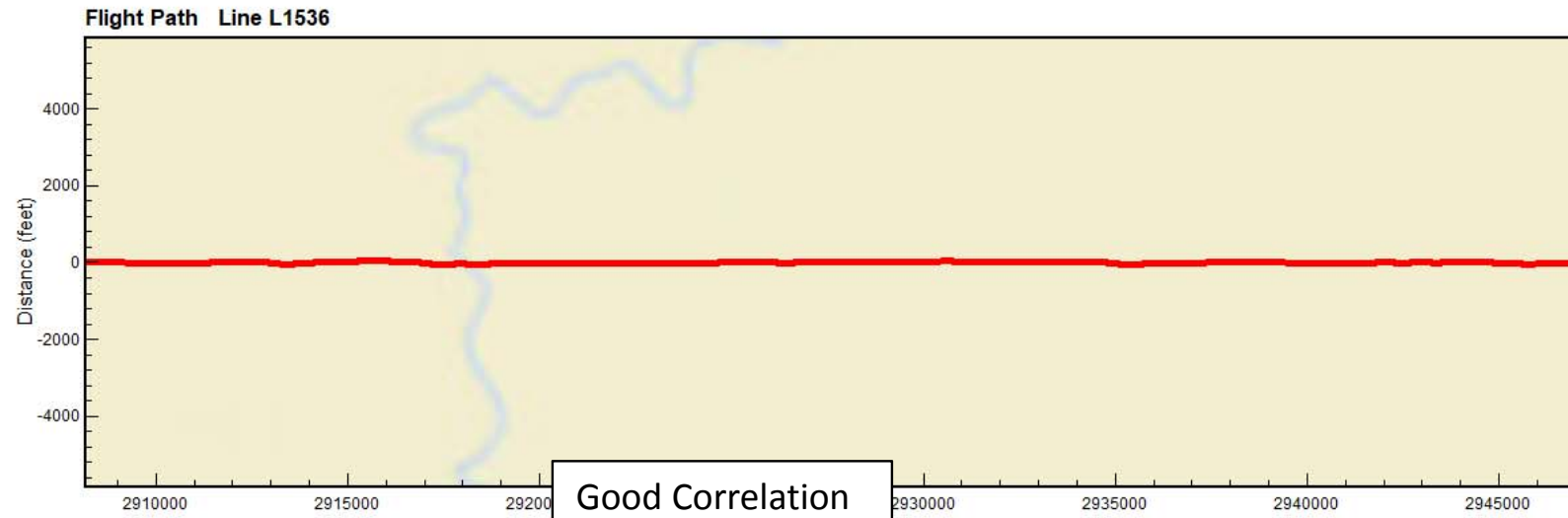
Boreholes plotted within 1/4 mile of flight line



Map projection NAD83 State Plane North Dakota South (Int. foot), NAVD88 (feet)



Results of the final inversion of Airborne Electromagnetic (AEM) data collected along flight lines within the Wahpeton AEM flight area from November 7-18, 2017. The inversions shown are Spatially-Constrained using the Aarhus Geo Software Workbench versions 5.6.2.0. Boreholes are from the North Dakota State Water Commission Mapservice download on November 6, 2017. Prepared for the North Dakota State Water Commission under contract to Geotech LTD by Aqua Geo Frameworks, LLC.

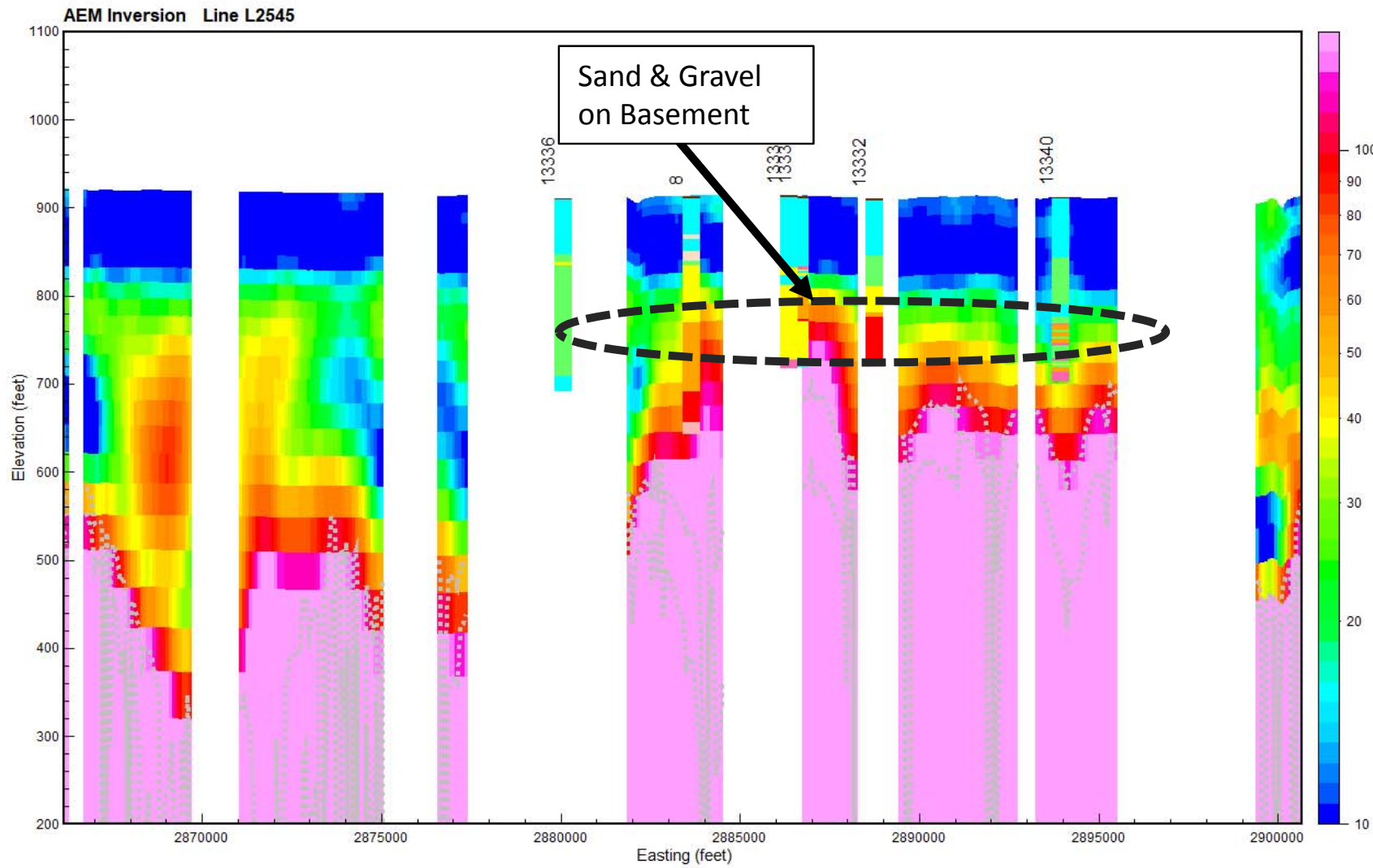
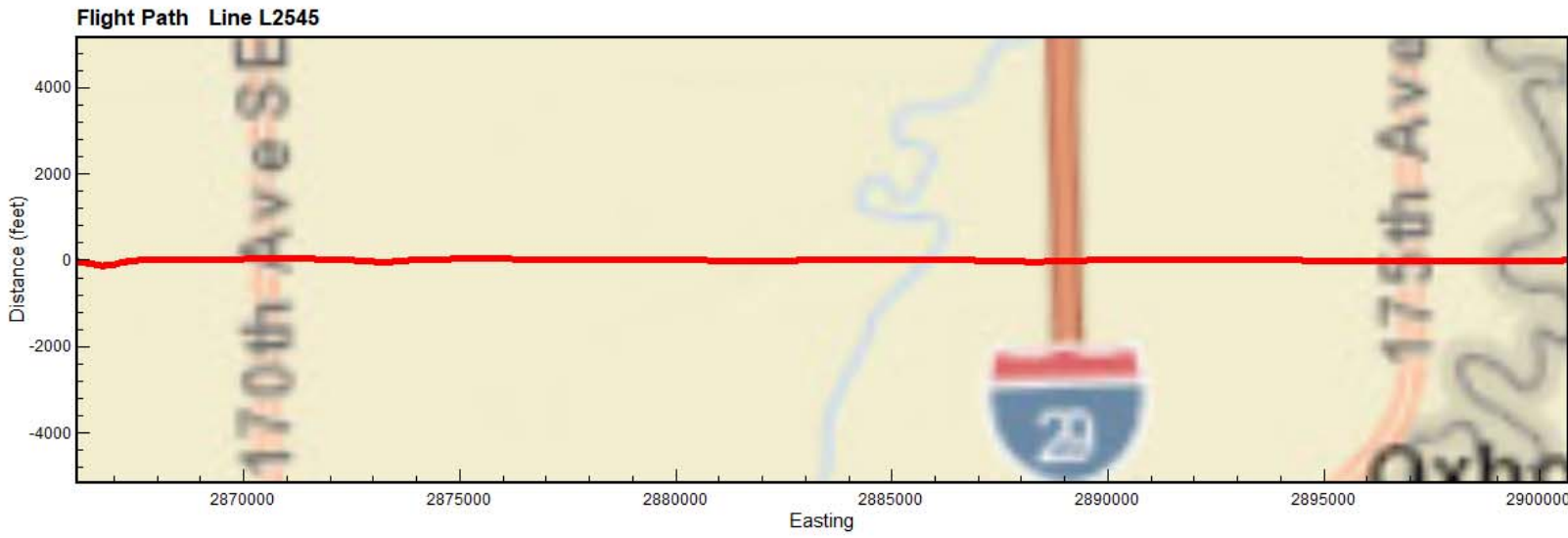


Gray dashed lines are the Upper and Lower Depth of Investigation

Boreholes plotted within 1/4 mile of flight line

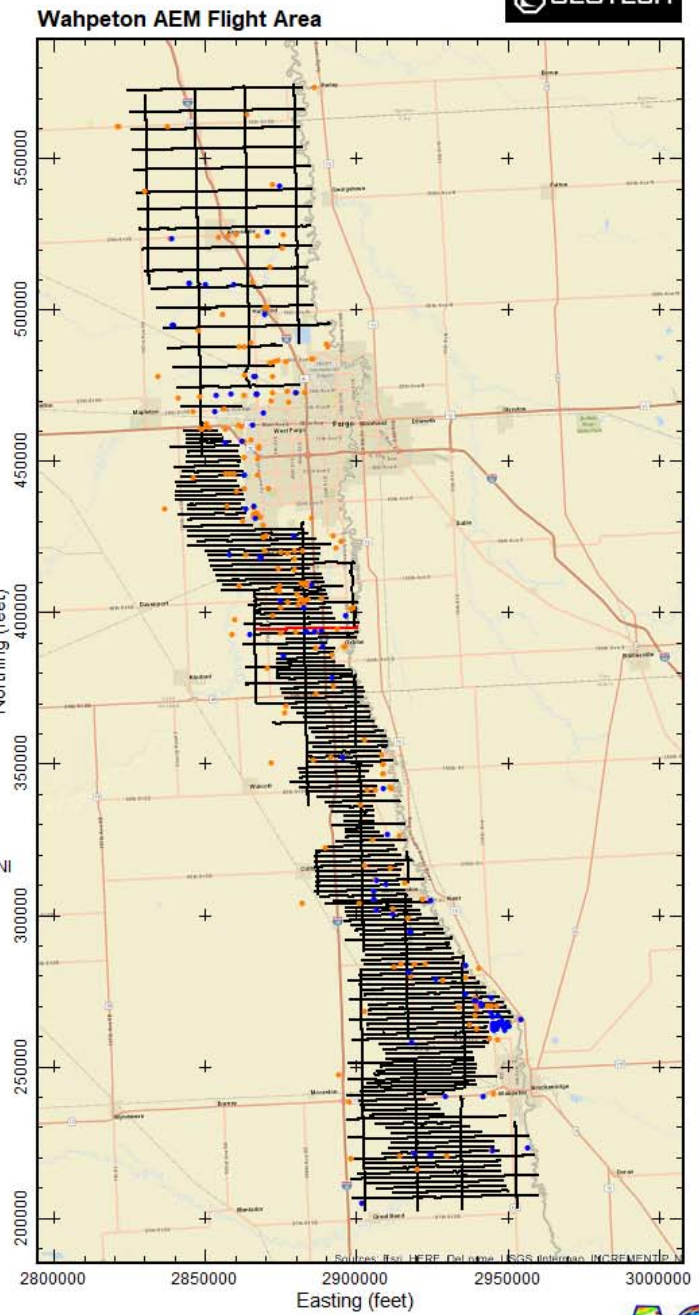
Map projection NAD83 State Plane North Dakota South (Int. foot), NAVD88 (feet)

Results of the final inversion of Airborne Electromagnetic (AEM) data collected along flight lines within the Wahpeton AEM flight area from November 7-18, 2017. The inversions shown are Spatially-Constrained using the Aarhus Geo Software Workbench versions 5.6.2.0. Boreholes are from the North Dakota State Water Commission Mapservice download on November 6, 2017. Prepared for the North Dakota State Water Commission under contract to Geotech LTD by Aqua Geo Frameworks, LLC.



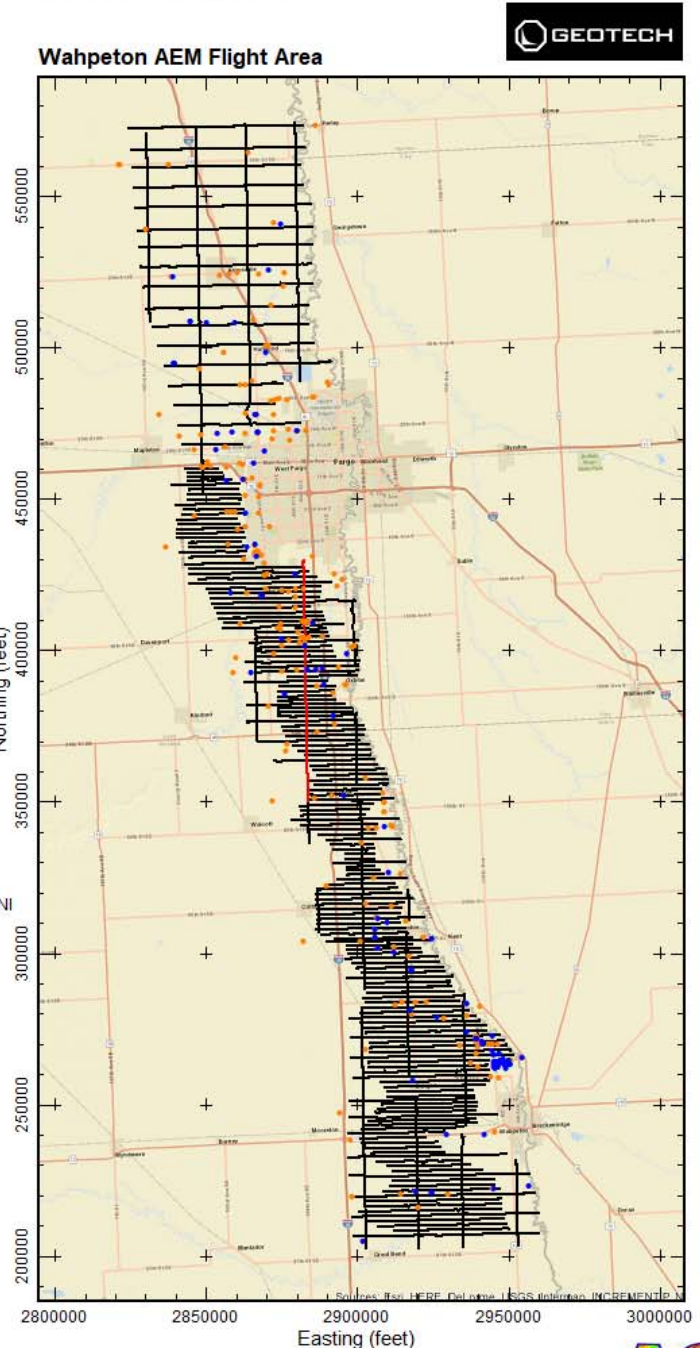
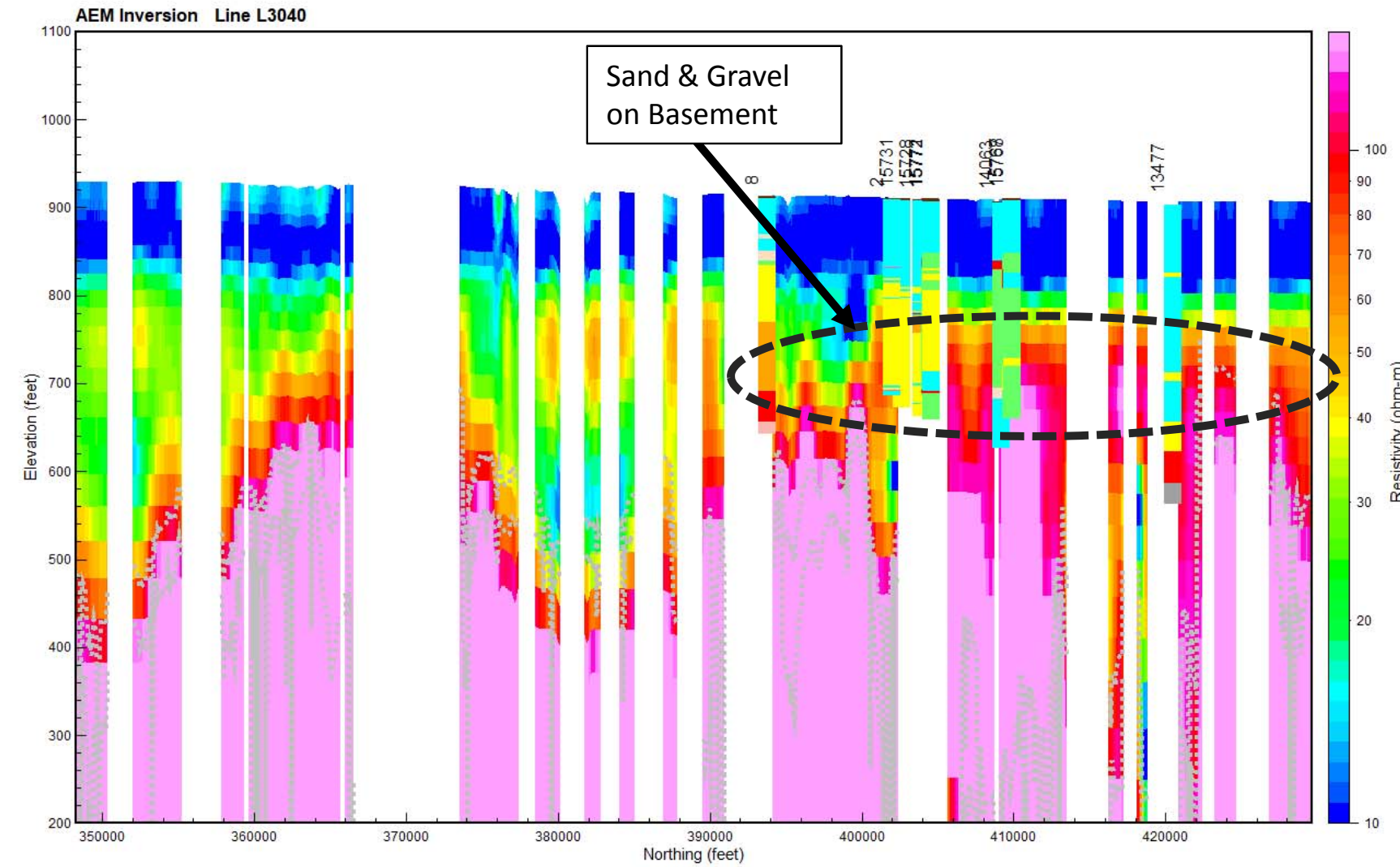
Gray dashed lines are the Upper and Lower Depth of Investigation

Boreholes plotted within 1/4 mile of flight line



Map projection NAD83 State Plane North Dakota South (Int. foot), NAVD88 (feet)

Results of the final inversion of Airborne Electromagnetic (AEM) data collected along flight lines within the Wahpeton AEM flight area from November 7-18, 2017. The inversions shown are Spatially-Constrained using the Aarhus Geo Software Workbench versions 5.6.2.0. Boreholes are from the North Dakota State Water Commission Mapservice download on November 6, 2017. Prepared for the North Dakota State Water Commission under contract to Geotech LTD by Aqua Geo Frameworks, LLC.



Gray dashed lines are the Upper and Lower Depth of Investigation

Boreholes plotted within 1/4 mile of flight line

Map projection NAD83 State Plane North Dakota South (Int. foot), NAVD88 (feet)



Results of the final inversion of Airborne Electromagnetic (AEM) data collected along flight lines within the Wahpeton AEM flight area from November 7-18, 2017. The inversions shown are Spatially-Constrained using the Aarhus Geo Software Workbench versions 5.6.2.0. Boreholes are from the North Dakota State Water Commission Mapservice download on November 6, 2017. Prepared for the North Dakota State Water Commission under contract to Geotech LTD by Aqua Geo Frameworks, LLC.

