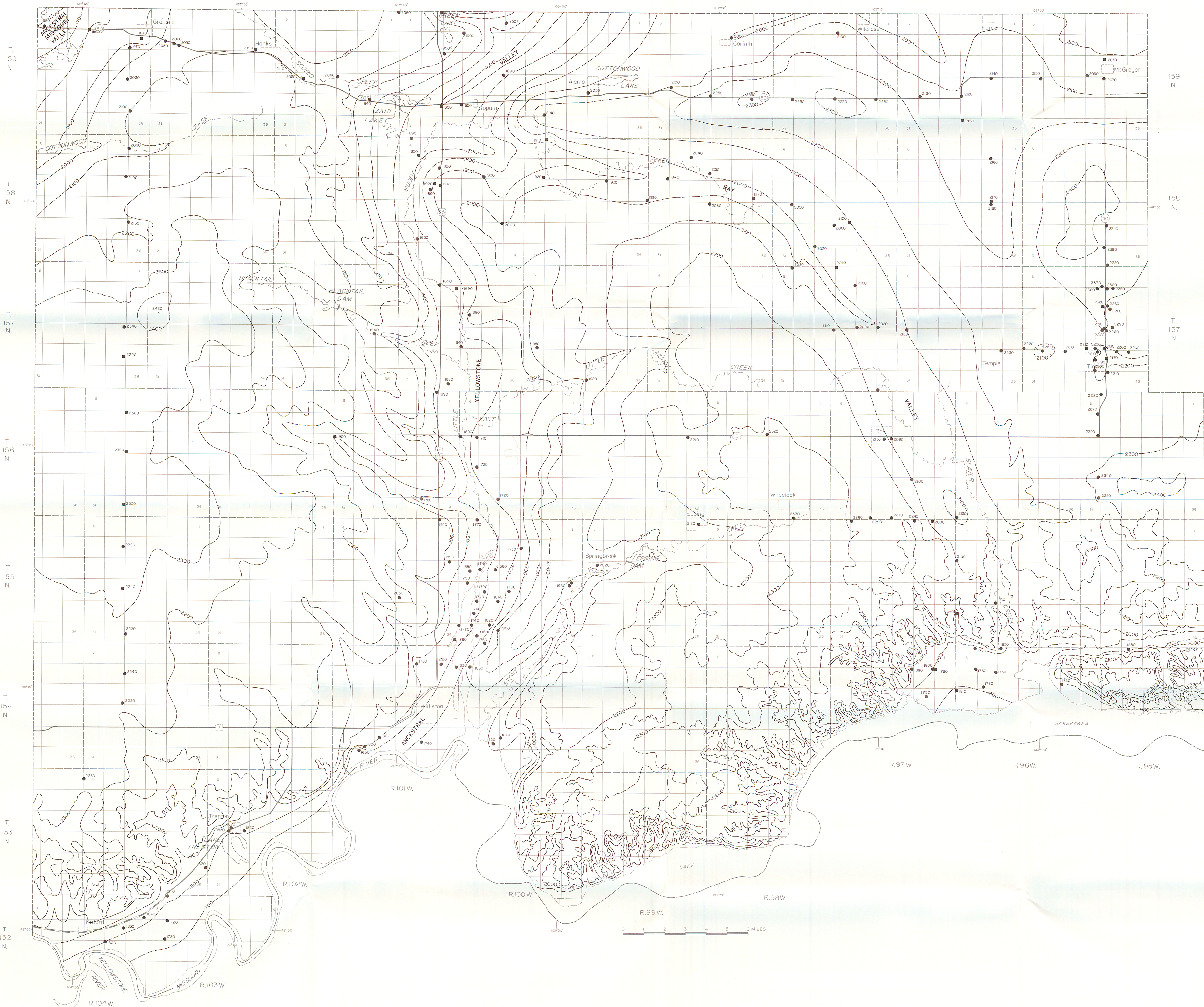


R.103W. R.102W. R.101W. R.100W. R.99W. R.98W. R.97W. R.96W. R.95W.

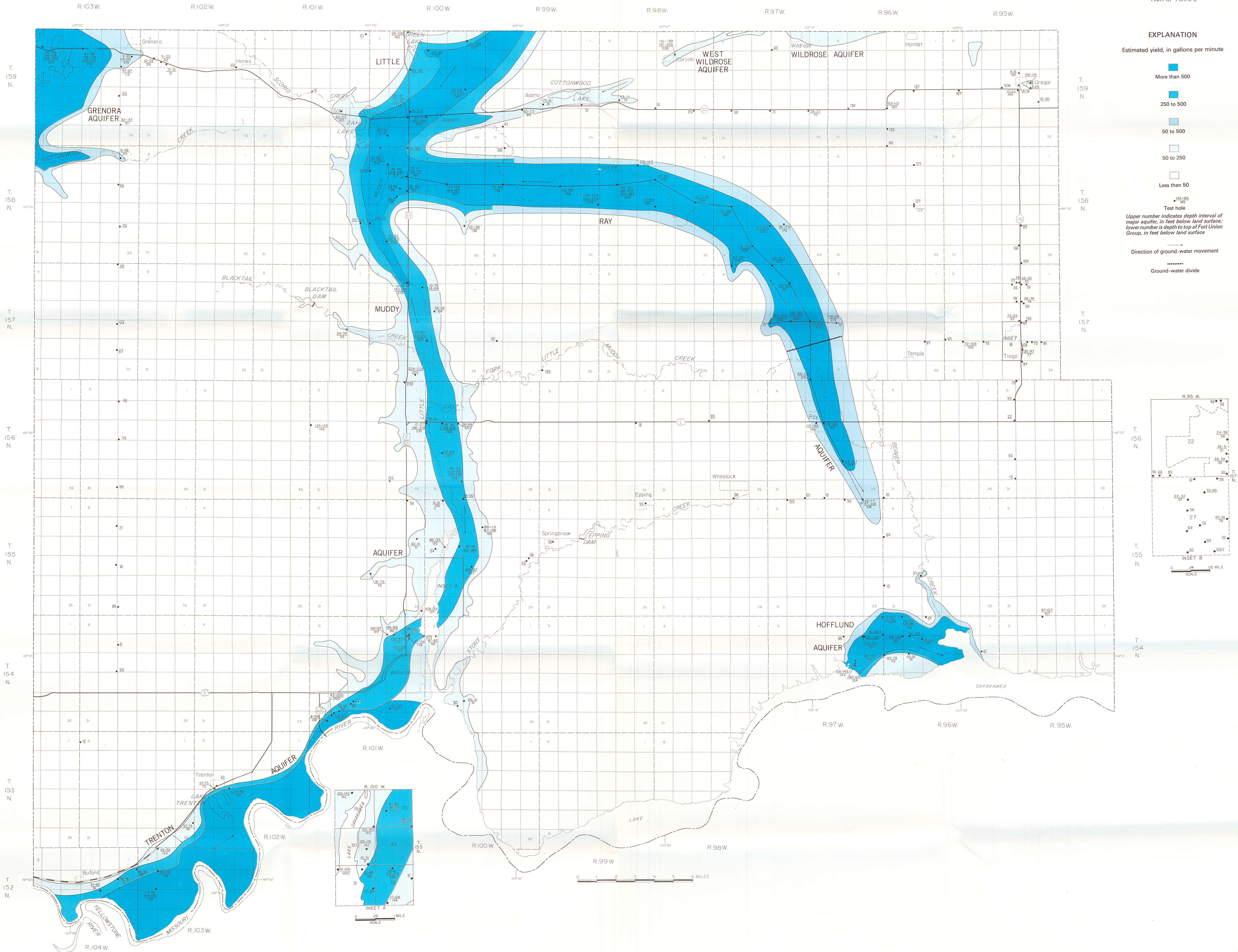


EXPLANATION

- 2070
Number is altitude of bedrock subsurface, in feet above mean sea level
- x 2480
Isolated outcrop
Number is altitude of bedrock outcrop, in feet above mean sea level
- 2000—
Bedrock contour
Shows altitude of bedrock, dashed where inferred, contour interval 100 feet. Datum is mean sea level

BASE PREPARED FROM NORTH DAKOTA STATE HIGHWAY DEPARTMENT COUNTY HIGHWAY MAPS

PLATE 1.—MAP SHOWING BEDROCK TOPOGRAPHY IN WILLIAMS COUNTY, NORTH DAKOTA



BASE PREPARED FROM NORTH DAKOTA STATE HIGHWAY DEPARTMENT COUNTY HIGHWAY MAPS

PLATE 2.—MAP SHOWING AVAILABILITY OF GROUND WATER IN GLACIAL DRIFT AQUIFERS IN WILLIAMS COUNTY, NORTH DAKOTA