

FIGURE 4. MAP OF STUTSMAN COUNTY SHOWING LOCATION OF TEST HOLES.

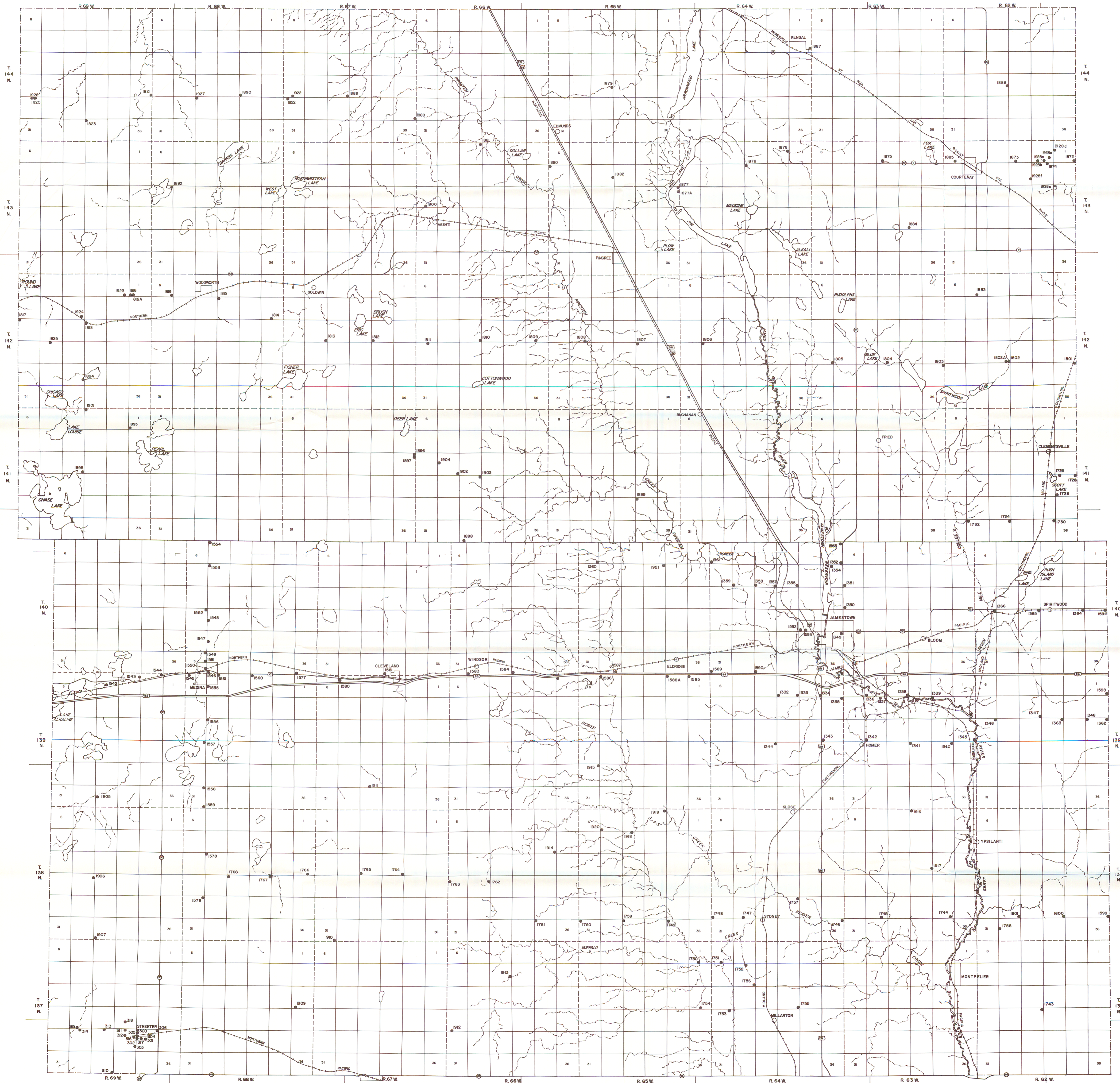


FIGURE 4
MAP OF STUTSMAN COUNTY SHOWING LOCATION OF TEST HOLES

EXPLANATION

- 1903
● 1881

Test hole and number

Test hole for which chemical analysis of water is available

N

SCALE

0 1 2 3 MILES

Base prepared from North Dakota Highway Department county general highway maps.

FIGURE 3. MAP OF STUTSMAN COUNTY SHOWING LOCATION OF WELLS AND SPRINGS.



FIGURE 3
MAP OF STUTSMAN COUNTY SHOWING LOCATION OF WELLS AND SPRINGS

EXPLANATION

Bottom of well reported to be in glacial drift, or no report available. Upper number indicates depth of well, lower number indicates depth to water. Measured depths are given in terms of a foot, measured water levels in hundredths.

Upper numbers indicate a range in depths of 90 to 104 feet, lower numbers indicate a range in depths of water of 8 to 12 feet. Postscript indicates 4 wells having the indicated range in depths and water levels are located on the site indicated by the circle.

Bottom of well reported to be in bedrock.

Well for which chemical analysis of water is available.

Well for which specific conductance measurement of water is available.

Well in which periodic water-level measurements have been taken.

Spring

Base prepared from North Dakota Highway Department county general highway maps.

SCALE
1 2 3 MILES