

**EXPLANATION**

ESTIMATED WELL YIELDS, IN GALLONS PER MINUTE (LITERS PER SECOND)

- 1000 TO 1500 (63 TO 95)
- 500 TO 1000 (32 TO 63)
- 250 TO 500 (16 TO 32)
- 50 TO 250 (3.2 TO 16)
- 0 TO 50 (0 TO 3.2)

SELECTED TEST-HOLE AND WELL DATA

TEST HOLE OR WELL—Upper numbers are top and base of aquifer in feet below land surface. Number in parentheses is aggregate thickness of sand or gravel. Thicknesses of less than 5 feet (1.5 meters) not shown. Lower number, if present, is depth to consolidated rock in feet below land surface.

SPRING

YIELD BOUNDARY—Dashed where approximately located

LOCATION OF BURIED VALLEY

TRACE OF SECTION

PLATE 1.—MAP SHOWING AVAILABILITY OF WATER FROM GLACIAL-DRIFT AQUIFERS IN RANSOM AND SARGENT COUNTIES, NORTH DAKOTA

Geology by C. A. Armstrong, 1980



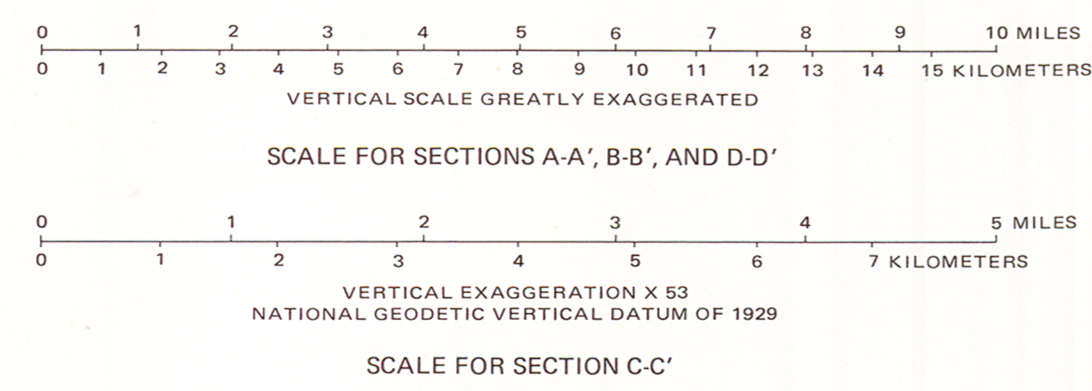
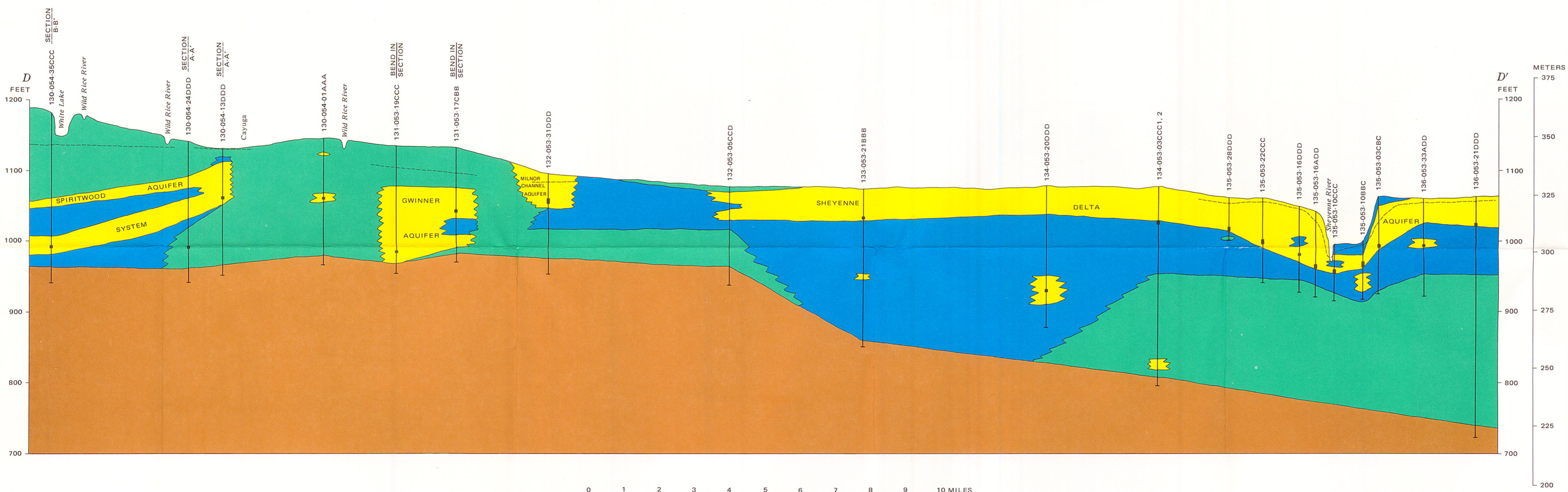
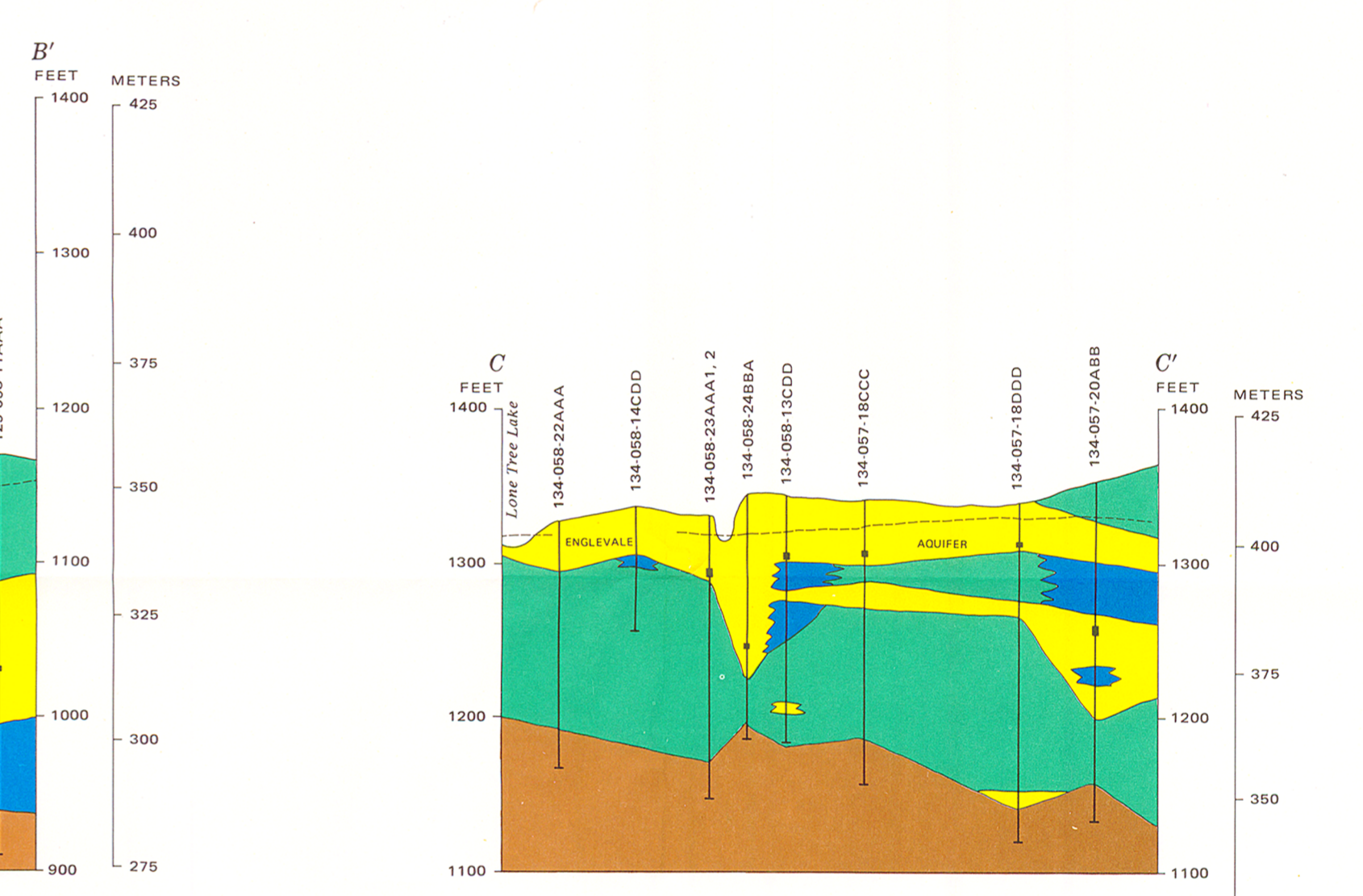
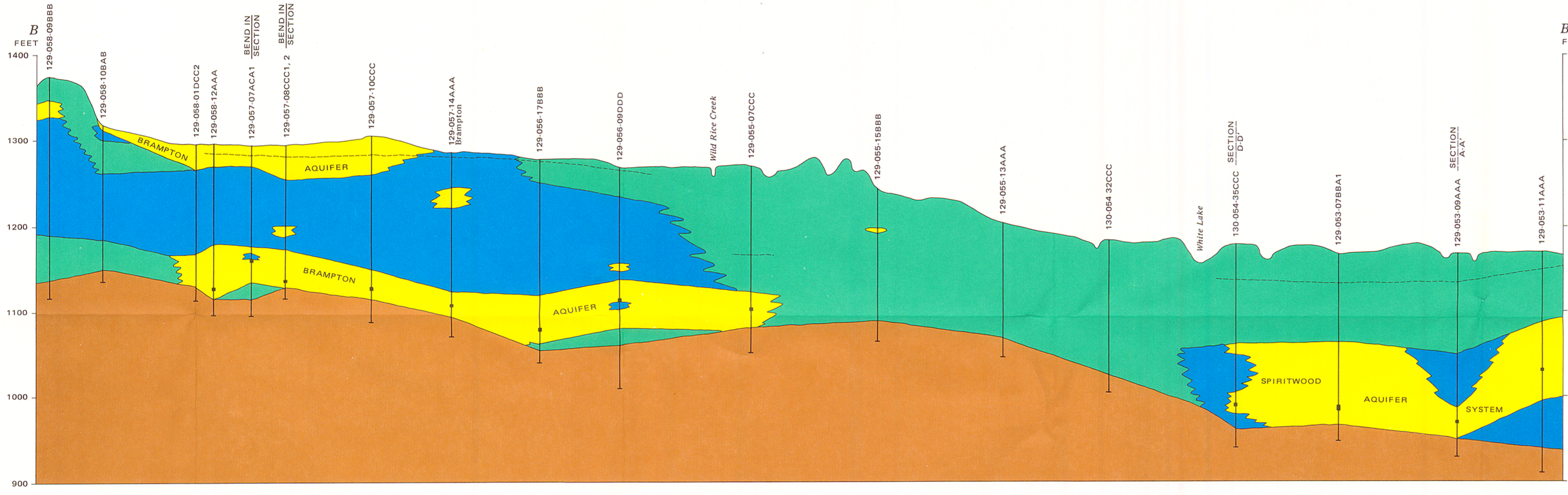
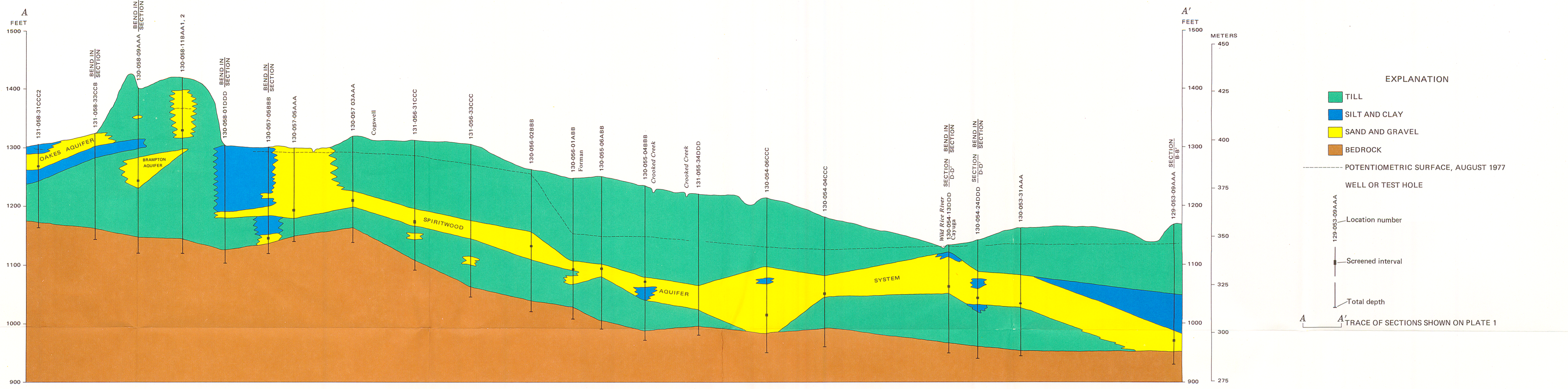


PLATE 2.—GEOHYDROLOGIC SECTIONS IN RANSOM AND SARGENT COUNTIES, NORTH DAKOTA  
 Geology by C. A. Armstrong, 1980