

**BIENNIAL REPORT
NORTH DAKOTA
STATE
WATER COMMISSION**



**FOR THE PERIOD
July 1, 1973 to June 30, 1975
Information Series No. 14**

3 3105 00449 0320
NORTH DAKOTA STATE AGENCY

TC824.N9 A32 BIE

**BIENNIAL REPORT
NORTH DAKOTA
STATE
WATER COMMISSION**



**PROPERTY OF
ND STATE WATER COMMISSION
LIBRARY**

FOR THE PERIOD

July 1, 1973 to June 30, 1975

Information Series No. 14

October 1, 1975

Honorable Arthur A. Link
Governor of North Dakota
State Capitol
Bismarck, North Dakota 58505

RE: 1973-75 Biennial Report
SWC File C6-1

Dear Governor Link :

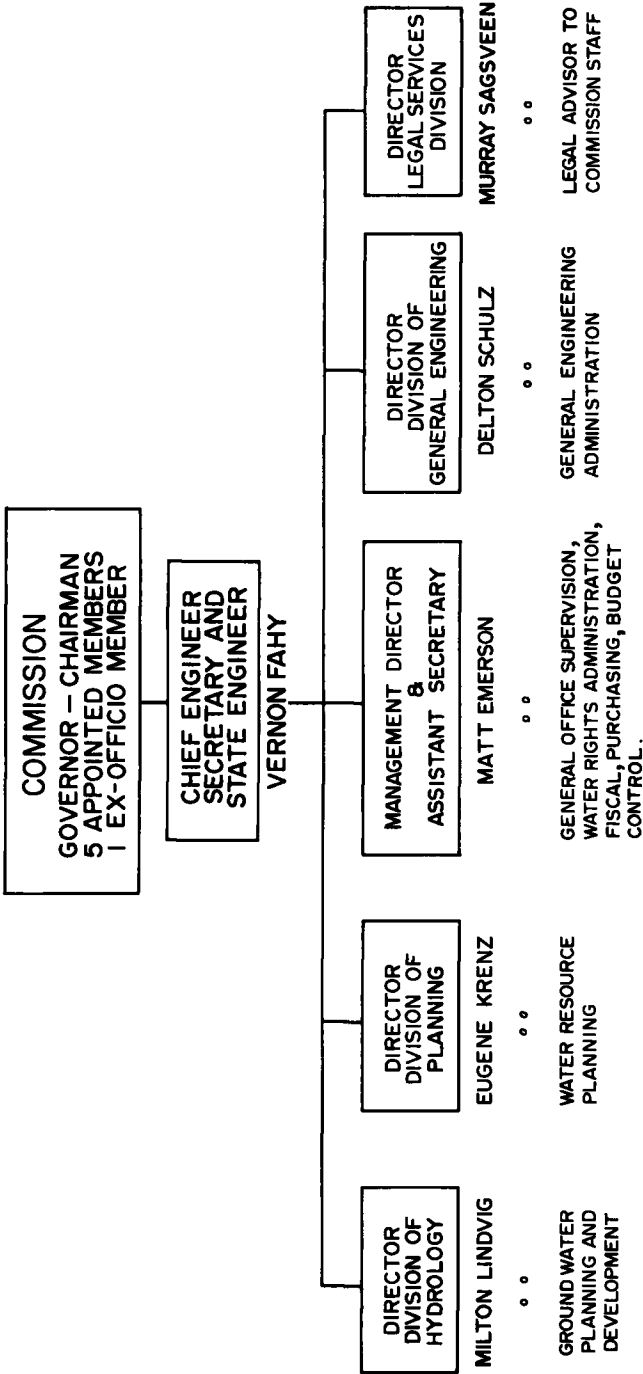
In compliance with North Dakota laws, we transmit for your information and consideration the Biennial Report of the North Dakota State Water Commission and the State Engineer for the period July 1, 1973 to June 30, 1975.

Respectfully submitted,

RICHARD P. GALLAGHER
Vice Chairman

ALVIN A. KRAMER
GORDON K. GRAY
ARTHUR LANZ
MYRON JUST

VERNON FAHY
Secretary and Chief Engineer
State Engineer



COMMISSION MEMBERS AS OF JUNE 30, 1975

Commission Members:

NAME	POSITION	DATE APPOINTED	TERM ENDS
Governor Arthur A. Link	Chairman		
Richard P. Gallagher	Vice-Chairman	April 18, 1973	July 1, 1979
James R. Jungroth	Member	April 18, 1973	July 1, 1975
Gordon Gray	Member	April 18, 1973	July 1, 1977
Donald E. Noteboom	Member	April 18, 1973	July 1, 1977
Alvin A. Kramer	Member	April 18, 1973	July 1, 1979
Myron Just	Ex-officio Member		

COMMISSION MEETINGS

DATE	LOCATION
July 3, 1973	Bismarck
July 20, 1973	Dickinson
August 29, 1973	Bismarck
September 27, 1973	Bismarck
October 29, 1973	Bismarck
December 6, 1973	Jamestown
February 19-20, 1974	Bismarck
March 29, 1974	Bismarck
April 29, 1974	Bismarck
May 28-29, 1974	Bismarck
July 24, 1974	Bismarck
October 15, 1974	Bismarck
December 16-17, 1974	Bismarck
January 31, 1975	Bismarck
May 12-13, 1975	Bismarck
June 30-July 1, 1975	Bismarck

NORTH DAKOTA STATE WATER COMMISSION

CREATION AND AUTHORITY — The Commission was created in 1937 by the 25th Session of the Legislative Assembly. Originally the Commission authorized was the Governor and six appointed members. In 1939 the Legislature reduced the number of members to five including the Governor and in 1949 the Commission was increased in size to seven members like it is at present as mentioned in the paragraph regarding organization. The Commission meets at regular intervals at the call of the Chairman in the principal office at Bismarck or at such special places as may be designated.

OBJECTIVES — The Commission has authority to investigate, plan, regulate, undertake, construct, establish, maintain, control, operate and supervise all works, dams and projects to achieve any of the following objectives: Provide water supplies for domestic, agricultural, municipal and industrial, irrigation, recreation and wildlife needs; control stream flow and channeling; provide for drainage of lands injured by excessive rainfall or water diversions; provide water for generation of electric power; develop and conserve waters within natural watersheds and provide for trans-basin diversion if deemed necessary; prepare and maintain a statewide master plan for future water resources development; and establish rules and regulations for the control of water supplies in the state.

ORGANIZATION — The State Water Commission is located at the State Office Building near the State Capitol in Bismarck, North Dakota. The Commission is made up of the Governor as Chairman, the Commissioner of Agriculture as an exofficio member and five appointed members who are appointed by the Chairman to serve terms of six years each. The terms of office for appointees are so arranged that one term and not more than two terms shall expire on the first day of July of each odd numbered year. The Commission appoints a secretary-Chief Engineer as their executive officer and he employs a staff as may be needed.

ACTIVITIES — In light of the responsibilities delegated by the State Legislature, the State Water Commission has promulgated a comprehensive state water resources program as follows:

1. Administration of the State's water laws and representation of the State's interest in water on federal and international levels;
2. Preparation and maintenance of a statewide master plan for future water resources development, including the collection of basic data;
3. Investigation and direction of planning of the development of water resources projects in accordance with the master plan;
4. Coordination of the program and projects of federal, state and local agencies in water resources planning and development and research; and cooperation with water management and other entities in planning and completing water resources development projects;
5. Organization of various types of legal entities through which water resources projects can be completed and operated.
6. Construction and repair of dams, drains and other water management facilities;
7. Appearances before federal agencies and congressional committees relative to appropriations and enactment of proposed legislation that may aid or oppose the state water resources development program;
8. Investigate or determine the ground-water availability in the state for municipal, agricultural, and industrial uses; and
9. The Commission participates financially through a "contract fund" in water resources projects sponsored by legal entities. The amount of participation is determined for each individual project with considerations given to the need of the project and the availability of financial contributions by other agencies and entities.

PUBLICATIONS — A list of publications is available at the Commission office located in the State Office Building, Bismarck, North Dakota 58501.

REPORT OF STATE WATER COMMISSION

**NORTH DAKOTA STATE WATER COMMISSION
FINANCIAL STATEMENT JULY 31, 1975
1973-75 APPROPRIATIONS**

	Available Funds		Disbursements		Account Balance UNEXPENDED
	APPROPRIATIONS	TODATE	JULY 75	JULY 75	
GENERAL OPERATIONS ACCOUNT					
1003 Salaries Expense..... (1)	\$1,108,639.00	\$1,063,061.77	\$ 53,745.33	\$ 45,577.23	
2003 Fees and Services.....	177,225.00	169,360.90	11,388.94	7,864.10	
3003 Supplies and Materials.....	163,600.00	163,600.00	11,119.57	.00	
4003 Equipment.....	39,500.00	39,452.27	1,553.27	47.73	
5403 Red Basin Comm.....	60,000.00	23,699.16	9,000.00	36,300.84	
5413 Mo. River Basin Comm.....	25,000.00	23,737.64	.00	1,262.36	
5423 Contract Fund..... (2)	1,851,000.00	1,441,991.10	138,516.70	409,008.90(2)	
TOTAL GENERAL OPERATIONS.....	\$3,424,964.00	\$2,924,902.84	\$225,503.25	\$500,061.16	
339 West River Diversion..... (3)	\$ 211,636.00	\$ 207,384.27	\$ 19,852.42	\$ 4,251.73	

(1) Includes \$90,000.00 Federal Grant

Includes \$49,000.00 transfer from Contract Fund to Salaries

Includes \$35,847 Interim Legislative action

(2) Includes \$900,00.00 Project Collection—(actual collections were \$409,008.90 less than appropriated)

(3) Includes \$15,818 Project Collections

NORTH DAKOTA STATE WATER COMMISSION
Project Expenditures
July 1, 1973 to June 30, 1975

Project No.	Name	County	Biennium Total	Collections
160	Planted Woods Lake	McLean	\$ 3,376.95	\$
213	Sioux Irrigation District	McKenzie	355.71	
214	Yellowstone Pumping Project	McKenzie	1,600.84	
216	Bowman Haley Dam	Bowman	404.49	
222	Buford-Trenton I. D.	Williams	107.80	
227	Eaton Flood Irrigation	McKenzie	24.10	
232	Knife River Basin	Mercer	114.40	
235	Goose River Flood Control	Trail	12,997.84	
237	Missouri River Diversion	Various	3,588.42	
259	Kulm Dam	LaMoure	6,243.89	
262	Cannonball and Cedar R. Dev.	Various	154.00	
273	Fuller Lake	Steele	253.83	
305	Red River Basin	Various	18,148.08	
308	Lake Ardoch	Walsh	44.00	
314	Gascoyne Dam	Bowman	510.40	
319	Wakopa Project	Rolette	160.38	
322	State Water Plan	Various	88,372.22	
327	White Earth Dam	Mountrail	32,737.98	112,287.50
330	Lake Metigoshe	Bottineau	4,173.39	
331	Upper Apple Creek	Burleigh	96.80	
346	Epping Dam	Williams	117.98	
347	Velva Flood Control	McHenry	148.50	
361	Lisbon Dam	Ransom		5,950.26
385	McKenzie Slough	Burleigh	136.40	
395	Weisser Dam	Emmons	139.15	

REPORT OF STATE WATER COMMISSION

PROJECT EXPENDITURES AND COLLECTIONS (Continued)

Project No.	Name	County	Biennium Total	Collections
400	Welk Dam	Emmons	872.70	
412	Cypert Park Dam	Burleigh	108.22	
413	Willow Creek Dam	Bottineau	50.60	
416	Devils Lake Basin	Ramsey, Benson and Towner		21,724.23
431	Strawberry Lake	McLean	55,954.36	
443	Lake Juanita Dam	Foster	26.95	
448	Minto Dam	Walsh	310.20	
461	Spiritwood Lake	Stutsman	42,708.64	
463	Rush Lake	Cavalier	112.21	
467	Kiwanis Dam	Foster	2,628.02	
475	Golden Lake	Steele	525.31	
479	Fish Creek Dam	Morton	14,674.87	47,687.00
484	Hoskins Lake	McIntosh	56,361.87	
489	Ray Dam	Williams	23,250.52	
503	Lake Ibsen	Benson	158.93	
528	McGregor Dam	Williams	6,809.77	
543	North Lemmon Lake	Adams	35,451.44	23,040.17
546	Vigness Dam	Walsh	13,048.30	7,318.00
551	Buffalo Lodge Lake	McHenry	174.02	
557	Gascoyne Lake	Bowman	426.07	
559	Hurricane Lake	Pierce	13,526.63	
560	Blacktail Dam	Williams	7,646.37	
561	Tioga Dam	Williams	794.64	
567	Pembiler Dam	Williams	23,980.76	12,273.06
568	Shenenne River Channel Change	Pembina and Cavalier	1,779.44	
576	Missouri River Bank Stabilization	Cass	10,093.60	
		Various	4,915.37	10,000.00

586	Short Creek Dam	1,354.18	Burke
599	Sheyenne River Diversion Dam	257.40	Cass
619	Hunter Water Supply	118.99	Cass
626	Tolley Flats Flood Control	1,894.97	Renville and Ward
627	Froelich Dam	219.07	Stout
628	Belfield Water Supply	8,455.85	Stark
632	Antler Creek Dam	94.08	Boottineau
635	Walhalla Park Dam	1,312.23	Pembina
636	Des Lacs Dam	160.31	Walsh
642	Sweetbriar Dam	330.77	Morton
647	Green River Dam	117.62	Billings and Stark
649	Ypsilanti Dam	551.55	Stutsman
656	New Rockford RR Dam	157.59	Eddy
660	Grafton RR Dam	462.18	Walsh
663	Cold Water Lake	1,120.47	McIntosh
667	Northgate Dam	13,525.41	Burke
668	Warsing Dam	1,468.37	Eddy
681	Drayton Dam	2,119.96	Pembina
682	SWC Shop	1,943.82	Burleigh
684	Grafton Water Supply	168.19	Walsh
690	Pipestem Reservoir	114.17	Stutsman
713	Oak Creek Water Management District	374.00	Boottineau
726	Walsh County Water Management District	44.00	Walsh
740	Bowman Country Ground Water	419.10	Bowman
743	Cathay Ground Water	695.18	Wells
744	Cavalier Ground Water	2.75	Pembina
761	Hankinson Ground Water	117.57	Trail
763	Hettinger Ground Water	131.34	Adams
771	Lankin Ground Water	66.00	Walsh
773	Lehr Ground Water	111.43	Logan

1,500.00

PROJECT EXPENDITURES AND COLLECTIONS (Continued)

Project No.	Name	County	Biennium Total	Collections
782	Minot Water Supply	Ward	739.27	
812	Wilton Ground Water	Burleigh and McLean	2,923.77	
816	Barnes County Ground Water	Barnes	361.63	
817	Burleigh County Ground Water	Burleigh	1,730.85	
818	Kidder County Ground Water	Kidder	413.60	
819	Stutsman County Ground Water	Stutsman	2,900.41	
820	Oak-Willow Creek Snagging and Clearing	Bottineau and McHenry	159.94	
826	Garrison Dam	Various	890.65	
831	Lake Darling	Renville and Ward	102.50	
839	Elm River Watershed	Cass, Trail and Steele	386.65	
842	Starkweather Watershed	Cavalier and Ramsey	354.20	
849	Tongue River Watershed	Cavalier and Pembina	94.60	
858	Eddy-Foster Ground Water	Eddy and Foster	165.00	
859	Williams County Ground Water	Williams	848.52	
860	McKenzie County Ground Water	McKenzie	126.25	
861	Burke-Mountrail Ground Water	Burke and Mountrail	41.07	
863	Renville-Ward Ground Water	Renville and Ward	133.60	
864	Bottineau County Ground Water	Bottineau	126.59	
866	Cass County Ground Water	Cass	709.75	
867	Richland County Ground Water	Richland	5,127.43	
868	Trail County Ground Water	Trail	165.00	
869	Weather Modification	Various	960.40	
871	Pembina River Snagging	Pembina and Cavalier	5,413.13	3,500.00
926	Dickinson Flood Control	Stark	8,071.14	
927	Edmore Water Supply	Ramsey	7,965.76	
929	Forest River Watershed	Grand Forks, Nelson and Walsh	943.38	

935	Bench Marks	Various	1,013.32	
936	Field Notes and Plats	Various	6,201.32	
940	Adams-Bowman County Ground Water	Adams and Bowman	3,524.95	22,000.00
941	Benson-Pierce Ground Water	Benson and Pierce	695.02	
942	Billings, Golden Valley and Slope Counties Ground Water	Billings, Golden Valley Slope	13,478.19	
944	Cavalier-Pembina Ground Water	Cavalier and Pembina	292.05	
945	Dickey-LaMoure Ground Water	Dickey and LaMoure	594.00	17,000.00
946	Dunn County Ground Water	Dunn	80,715.68	8,750.00
948	Emmons County Ground Water	Emmons	27,499.04	
949	Golden Valley Ground Water	Golden Valley	413.05	
950	Grand Forks County Ground Water	Grand Forks	169.40	
951	Grant-Sioux Ground Water	Grant and Sioux	8,139.47	18,200.00
953	Hettinger-Stark Ground Water	Hettinger . . Stark	2,309.38	
954	Dickey-LaMoure Ground Water	Dickey and LaMoure	17,048.57	11,690.00
956	McHenry County Ground Water	McHenry	129.80	
957	McIntosh County Ground Water	McIntosh	109.78	
958	McLean County Ground Water	McLean	17,538.93	
959	Mercer-Oliver Ground Water	Mercer and Oliver	376.32	
960	Morton County Ground Water	Morton	127,641.17	20,000.00
962	Nelson-Walsh Ground Water	Nelson and Walsh		
966	Ramsey County Ground Water	Ramsey	1,589.50	
967	Ransom-Sargent County Grounds Water	Ransom and Sargent	45,556.75	13,500.00
968	Rolette County Ground Water	Rolette	11,401.46	
969	Sargent County Ground Water	Sargent	33.00	
970	Sheridan County Ground Water	Sheridan	693.00	
972	Slope County Ground Water	Slope	459.81	
974	Griggs-Steele Ground Water	Griggs and Steele	706.22	
978	Wells County Ground Water	Wells	12,324.94	22,000.00
982	Park River WS and FC	Cavalier, Pembina and Walsh	132.00	
			1,975.79	

PROJECT EXPENDITURES AND COLLECTIONS (Continued)

Project No.	Name	County	Biennium Total	Collections
984	Souris River Basin.	Various	\$ 1,249.46	
987	Cavallier County Water Management District.	Cavallier	41.73	
989	Quality of Water Studies.	Various	22,902.00	
992	Surrey Ground Water.	Ward	618.82	
993	Long Creek.	Divide	31.90	
999	Road Drainage General.	Various	311.85	
1002	Benson County Road Drainage.	Benson	75.90	
1005	Bowman County Road Drainage.	Bowman	44.00	
1008	Cass County Road Drainage.	Cass	73.70	
1009	Cavallier County Road Drainage.	Cavallier	206.80	
1013	Eddy County Road Drainage.	Eddy	77.55	
1014	Emmons County Road Drainage.	Emmons	545.29	
1024	McHenry County Drainage General.	McHenry	216.79	
1026	McKenzie County Road Drainage.	McKenzie	254.10	
1029	Morton County Road Drainage.	Morton	273.74	
1039	Rolette County Road Drainage.	Rolette	247.50	
1041	Sheridan County Road Drainage.	Sheridan	119.35	
1046	Stutsman County Road Drainage.	Stutsman	80.30	
1047	Towner County Road Drainage.	Towner	180.95	
1049	Walsh County Road Drainage.	Walsh	121.00	
1053	Drainage General.	Various	13,203.53	
1056	Bottineau County Drainage General.	Bottineau	438.52	
1060	Kramer Drain.	Bottineau	16,004.56	
1061	Stone Creek Drain.	Bottineau	648.84	
1063	Cass County Drainage General.	Cass	292.94	
1065	Cass County Drain No. 3.	Cass	291.37	
1070	Cass County Drain No. 14.	Cass	7,799.10	

1073	Cass County Drain No. 18	287.65	
1075	Cass County Drain No. 21	25,464.01	
1080	Cass County Drain No. 27	3,320.85	
1088	Cass County Drain No. 37	6,591.77	
1097	Noble Township Drop Structure	90.20	
1098	Cavalier County Drainage General	424.41	
1103	Divide County Drainage General	75.90	
1104	Eddy County Drainage General	116.50	
1105	Grand Forks County Drainage General	6,646.43	
1113	Grand Forks County Drain No. 14	193.05	
1130	Mountrail County Drainage General	73.70	1,500.00
1131	Nelson County Drainage General	435.05	
1132	Horseshoe Lake	3,034.68	
1133	Pembina County Drainage General	1,128.18	
1141	Pembina County Drain No. 13	2,919.16	
1156	Pembina County Drain No. 43	136.40	
1158	Pembina County Drain No. 50	47.08	
1159	Pembina County Drain No. 51	12,194.41	
1164	Pembina County Drain No. 64	90.20	
1170	Pierce County Drainage General	547.25	
1171	Ramsey County Drainage General	118.10	
1174	Richland County Drainage General	619.43	
1218	Rolette County Drainage General	336.55	
1223	Steele County Drainage General	523.37	
1224	Trail County Drainage General	124.36	
1232	Trail County Drain No. 13	11,061.14	
1243	Trail County Drain No. 23	90.20	
1250	Trail County Drain No. 35	68.20	
1252	Walsh County Drainage General	794.16	
1253	Warsing Dam	21,979.79	1,500.00

PROJECT EXPENDITURES AND COLLECTIONS (Continued)

Project No.	Name	County	Bienium Total	Collections
1256	Walsh County Drain No. 25.....	Walsh	3,173.21	
1259	Walsh-Pembina Drain No. 50.....	Walsh and Pembina	44.00	
1262	Ward County Drainage General	Ward	1,083.73	
1265	Benson County S.P.....	Benson	163.74	
1266	Billings County S.P.....	Billings	114.40	
1267	Bottineau County S.P.....	Bottineau	2,501.67	
1270	Burleigh County S.P.....	Burleigh	85.80	
1273	Dickey County S.P.....	Dickey	734.54	
1276	Eddy County S.P.....	Eddy	1,310.54	500.00
1277	Emmons County S.P.....	Emmons	156.20	
1279	Golden Valley County S.P.....	Golden Valley	3,147.02	
1280	Grand Forks County S.P.....	Grand Forks	114.40	
1281	Grant County S.P.....	Grant	162.25	
1287	McHenry County S.P.....	McHenry	79.75	
1288	McIntosh County S.P.....	McIntosh	82.50	
1289	McKenzie County S.P.....	McKenzie	90.20	
1290	McLean County S.P.....	McLean	509.51	
1291	Mercer County S.P.....	Mercer	15.40	
1292	Morton County S.P.....	Morton	356.40	
1295	Oliver County S.P.....	Oliver	79.20	
1297	Pierce County S.P.....	Pierce	871.05	500.00
1305	Sioux County S.P.....	Sioux	36.30	
1306	Slope County S.P.....	Slope	82.50	
1307	Stark County S.P.....	Stark	4,149.24	1,892.00
1313	Ward County S.P.....	Ward	36.30	
1314	Wells County S.P.....	Wells	193.55	
1315	Williams County S.P.....	Williams	343.06	

1316	Towner County Drainage.....	1,077.46
1318	Liberty Township Dam..... Ransom	44.00
1324	Oak Creek Dam..... Bottineau	4,683.49
1325	Sterling Dam..... Burleigh	12,674.42
1335	Park River Bank Stabilization..... Walsh	118.80
1338	New Rockford Irrigation District..... Eddy	75.90
1339	Bone Hill Creek..... LaMoure	1,257.99
1341	Rugby Ground Water..... Pierce	571.89
1342	Boundary Creek Watershed..... Bottineau	165.00
1346	Mt. Carmel Dam..... Cavalier	3,784.49
1351	English Coulee..... Grand Forks	255.75
1357	Lansford Water Supply..... Bottineau	5,234.67
1358	Sheep Creek Dam..... Grant	5,982.71
1359	Barnes County Drain No. 2..... Barnes	38.50
1362	Rock Lake..... Towner	1,025.31
1373	Pipeline and Cable Crossings..... Various	341.30
1376	Outdoor Recreation General..... Statewide	154.22
1377	Lucca Dam..... Cass and Barnes	37.95
1382	Camel Butte Dam..... Golden Valley	190.50
1389	Irrigation Districts General..... Various	665.39
1392	Missouri River Reservoir Operations..... Various	1,120.35
1393	Hydrologic Surveys General..... Various	788.79
1394	Topographic Mapping General..... Various	303,383.09
1395	Ground-Water Surveys General..... Various	325,044.49
1396	Missouri Basin Comprehensive Planning..... Various	2,436.82
1397	Pollution Control General..... Various	96.80
1400	Water Permits General..... Various	60,737.51
1401	International Boundary Drainage..... Pembina	10,748.64
1403	N. D. Water Resources Research Inst..... Various	182.60
		1,000.00
		1,000.00
		13,582.89

PROJECT EXPENDITURES AND COLLECTIONS (Continued)

Project No.	Name	County	Biennium Total	Collections
1408	Minot Flood Control	Ward	59,458.39	
1409	Erie Dam	Cass	15.63	
1418	Big Coulee Dam	Towner	203.78	4,319.00
1431	Emergency Disaster Operations	Various	21,537.60	3,545.00
1434	Minnewaukan Dam	Benson	310.07	
1435	Green Lake	McIntosh	32,086.32	2,430.99
1444	Pembina City Flood Control	Pembina	99.00	
1461	Pembina River Channel Change	Pembina	4,775.01	
1464	Beulah Dam	Mercer	96.80	
1471	Erie Dam	Cass	2,291.61	
1476	Hillsboro Dam	Trail	48,009.37	
1477	Scophammer Dam	Renville	188.21	
1478	Nelson Dam	Oliver	350.21	
1480	Meandered Lakes	Various	826.50	
1481	State Office Building	Burleigh	298.40	
1483	Wells County Drain No. 1	Well	243.93	
1491	Hidasta Indian Village	Mercer	96.80	
1493	Brag Dam	Griggs and Steele	563.07	
1494	Missouri River Main Stem Water Marketing	Various	543.84	
1495	Lignite Resources Development	Various	2,261.75	
1497	30 Mile Creek	Hettinger	140.80	
1507	Yellowstone River Basin	McKenzie	963.81	
1508	Wild Rice Basin	Cass, Richland and Sargent	1,987.65	2,500.00
1515	Cottonwood Creek	LaMoure	25,251.28	110,386.48
1517	Hazen Flood Control	Mercer	3,353.99	1,000.00
1518	Wahpeton Ground Water	Richland	285,497.27	

1519	James River Basin	108.90	Various
1524	Noonan Dam	2,317.75	Divide
1525	Steele County Drain No. 1	57,826.45	Steele
1530	Cella Dam	843.90	Trail
1535	Saline Water Study	21,635.75	Various
1536	Grand Forks Water Supply	75.90	Grand Forks
1537	Edinger Dam	493.35	Wells
1539	Fremont Township Dam	3.30	Cavalier
1540	McHenry County Drainage General	486.07	McHenry
1542	Lawton Ground Water	286.00	Ramsey
1543	West River Diversion	270,056.17	Various
1550	Trail County Water District	365.31	Trail
1554	McLean County Drainage General	974.93	McLean
1556	Indian Creek Dam	29,594.94	Hettinger
1559	Holiday Water Supply	1,849.21	Dunn
1561	Public Works Impact Program	10,405.25	Various
1563	Crosby Ground Water	4,309.68	Divide
1565	Langdon Diversion Drain	16,755.76	Cavalier
1567	Cass County Drain No. 51	6,739.13	Cass
1568	Sheyenne Delta	11,000.00	Various
1569	Missouri River Basin Comm	42,489.93	Various
1570	Ecology and Environment	83.60	Various
1573	Casselton Water Supply	38.50	Cass
1574	Rural Water Districts	3,829.35	Various
1576	Edgeley Ground Water	15,098.24	LaMoure
1577	Flood Hazard Studies	21,968.27	Various
1579	Dam Safety Inspection	42,231.18	Various
1581	Burleigh County Drainage General	83.05	Burleigh
1582	Medora Flood Control	132.00	Billings
1583	Silver Lake	1,375.51	Benson
		37,325.00	
		3,830.50	
		122,540.34	
		7,970.00	
		38,731.64	
		1,000.00	
		27,403.15	

REPORT OF STATE WATER COMMISSION

PROJECT EXPENDITURES AND COLLECTIONS (Continued)

Project No.	Name	County	Biennium Total	Collections
1586	Rolette City Storm Water Outlet	Rolette	184.78	
1587	Pembina County Drain No. 68	Pembina	418.21	
1588	Upper Mississippi River Basin Comm.	Various	20,051.43	
1589	Oberon Ground Water	Benson	2,963.94	1,000.00
1591	Water Resources Seminar	Various	1,092.30	
1593	Soil Classification Maps	Various	10.40	
1594	Cass County Drain No. 53	Cass	10,619.68	
1595	Lignite Gasification	Various	885.25	
1596	Washburn City Ground Water Study	McLean	5,340.78	
1597	Tri County Water Res. Dev. Assoc.	Burleigh, Emmons and Kidder		
1599	NGPRP	Various	1,103.15	
1600	Hebron Flood Control	Morton	11,350.45	
1602	Ad Hoc Committee	Various	35,106.50	12,500.00
1604	Eddy County Water Management District	Eddy	3,406.46	
1606	Logan County Water Management District	Logan	19.48	
1607	McHenry County Water Management District	McHenry	228.31	
1611	New Salem Ground Water	Morton	95.15	
1612	Mined Land Planning Group	Various	12,299.93	3,000.00
1613	Cass County Drain No. 55	Cass	228.55	
1614	Lower Mauvais Coulee	Benson and Ramsey	75.35	
1615	Cass County Drain No. 54	Cass	1,930.30	
1616	Devils Lake Advisory Committee	Ramsey	616.33	
1618	Remote Sensing	Various	6,608.78	
1619	Hydrologic Studies in Coal Areas	Various	1,841.24	
1620	Slope County Drainage General	Slope	15,918.57	15,000.00
1621	Nathe-Wyum Dam	Sargent	89.65	
			44.00	

1622	Channel Improvement Goose River	Nelson and Steele	3,544.61
1623	Trail County Drain No. 36	Trail	428.15
1624	Lake Williams Restoration Area	McLean	219.45
1626	Bur. of Recl. and SWC Mun. Water Studies	Various	275.55
1627	Rock Lake - Beaver Creek	Towner	90.20
TOTALS			\$3,073,407.55
			\$794,377.21

**WATER PERMITS
FISCAL YEAR 1973 - PENDING APPLICATIONS**

No.	Name And Address	County	Source	Class of Permit	Acres	Acres-Foot	Acres	Date of Claim	Status
1888	Park, Phillip - Steele	Kidder	Ground Water	Irrigation	270.0	163.6	163.6	8-12-72	Pending
1880	Solen, City of Solen	Sioux	Ground Water	Municipal	194.00			9-29-72	Pending
1883	Langerud, Henry - Hooper	Walsh	Ground Water	Industrial	3.0			8- 2-73	Pending
1900	West Fargo, City of - West Fargo	Cass	Ground Water	Municipal	565.0			1-12-73	Pending
1901A	Michigan-Wisconsin Pipeline Company - Detroit, Michigan	Mercer	Lake Sakakawea	Industrial	17,000.0			1-18-73	Approved
1901B	Michigan-Wisconsin Pipeline Company -	Dunn	Lake Sakakawea	Industrial	64,000.0			1-18-73	Pending
1901C	Michigan-Wisconsin Pipeline Company -	McLean	Lake Sakakawea	Industrial	74,000.0			1-18-73	Pending
1901D	Michigan-Wisconsin Pipeline Company -	Mercer	Missouri River	Industrial	94,000.0			1-18-73	Pending
1908	Harwood Development Assoc. -	Cass	Ground Water	Industrial	100.0			2-13-73	Pending
1909	Egeland, David - Rhame	Bowman	Spring Creek, trib. to Little Missouri River	Irrigation	96.0		96.4	8-31-73	Pending

REPORT OF STATE WATER COMMISSION

WATER PERMITS (Continued)
FISCAL YEAR 1973—PENDING APPLICATIONS

No.	Name and Address	County	Source	Class of Permit	Acres-Feet	Acres	Date of Claim	Status
1911	Knudse E. H.D. - Minot	McLean	Ground Water	Irrigation	840.0	560.0	2-26-73	Approved
1924	Becker, Henry N. - Streeter	Logan	Ground Water	Irrigation	235.5	157.0	5- 7-73	Approved
1929	Titus, Robert - Oakes	Dickey	Ground Water	Irrigation	222.0	148.0	5- 8-73	Approved
1947	Sherman, William - West Fargo	Cass	Sheyenne River	Irrigation	120.0	80.0	6- 7-73	Approved
1948	German, Gerald - Guelph	Dickey	James River	Irrigation	334.0	223.0	6-18-73	Approved
1949	Nesson, Homer - Douglas	Ward	Unnamed Lake	Irrigation	477.0	318.0	7-25-73	Approved
1950	Staudinger, James - Richardton	Dunn	Intermittent Draw and Knife River	Irrigation	195.5	195.5	7-30-73	Approved
1951	Nester, Duane - Sheldon	Ransom	Intermittent trib. & springs	Irrigation	220.0	220.0	3-14-74	Approved
1952	Foell, Alfred - Moffit	Emmons	Ground Water	Irrigation	360.0	240.0	7-30-73	Approved
1953	McLean County Land Company - Minot	McLean	Ground Water	Irrigation	202.5	135.0	8- 7-73	Approved
1954	Trail County Water Users, Inc. Hillsboro	Trail	Ground Water	Industrial (Rural Domestic)	644.0		8- 8-73	Approved
1955	Berge, Ronald A. - Dazey	Griggs	Ground Water	Irrigation	544.0	272.7	8-15-73	Approved
1956	Heinrich, George - Adrian	LaMoure	Ground Water	Irrigation	1040.0	520.0	9-24-73	Approved
1957	Gustafson, Henry - Halliday	Dunn	Knife River	Irrigation	84.0	84.0	7-10-73	Approved
1958	Heinzen, Ralph N. - Emmet	McLean	Ground Water	Irrigation	202.5	135.0	9- 1-73	Approved

STATE OF NORTH DAKOTA

21

1959	U.S. Forest Service - Billings, Montana	McKenzie	Intermittent Branch W. Branch Charbonneau Creek	Stockwater Fish and Wildlife	20.0 Storage 13.8 annual use	8-15-73	Approved
1960	Buechler, Johnny - Zap	Mercer	Intermittent Draw, trib. to Knife River	Irrigation	51.9	7-30-73	Approved
1961	Willoughby, D.C. - Russo	McLean	Ground Water	Irrigation	600.0	7- 5-73	Approved
1962	Carroll, Patrick - Moffit	Burleigh	Ground Water	Irrigation	501.6	8-28-74	Approved
1963	Minnkota Power Cooperative - Grand Forks	Oliver	Nelson Lake	Industrial	5,000.0 storage 2,480.0 annual use	8-29-74	Approved
1964	Minnkota Power Cooperative - Grand Forks	Oliver	Missouri River	Industrial	7,500.0	9-10-73	Approved
1965	Renz, Kenneth L. - Moffit	Burleigh	Ground Water	Irrigation	411.0	8-28-73	Approved
1966	Thomas, Ben F. - Hazen	Mercer	Knife River & Ground Water	Irrigation	409.0	9- 4-73	Approved
1967	Appledorn, Franklin - Gladstone	Dunn	Knife River	Irrigation	171.0	8-28-73	Approved
1968	N. Valley Water Association - Cavalier	Pembina	Ground Water	Industrial (Rural Domestic)	200.0	8-31-73	Pending
1969	Sonsalla, Mike - Marmarth	Slope	Beaver Creek trib. to Little Missouri River	Irrigation	101.4	9- 7-73	Approved
1970	Stagner, William - Rhame	Slope	Intermittent stream trib. to Deep Creek & Little Missouri River	Irrigation	370.0	9- 5-73	Approved
1971	Baker, Gerald - Lidgerwood	Richland	Ground Water	Irrigation	192.0	7-25-73	Approved
1972	Grand Forks County WMD - Grand Forks	Grand Forks	Intermittent Tributary, Turtle River	Flood Control	1,680.0 storage 30.0 annual use	9- 5-73	Approved
1973	Ghylin, Gerald A. - Regan	Burleigh	Cattail Slough tributary to Painted Woods Creek	Irrigation	50.0 (148.0 pending)	9-13-73	Approved
1974	Wagoner Brothers - Sutton	Griggs	Ground Water	Irrigation	640.0	9-18-73	Approved
1975	Kvamme, Norman - Ruso	McLean	Ground Water	Irrigation	390.0	9-18-73	Approved

WATER PERMITS (Continued)
FISCAL YEAR 1973—PENDING APPLICATIONS

No.	Name and Address	County	Source	Class of Permit	Acre-Feet	Acres	Date of Claim	Status
1976	N. D. Farm Systems - Valley City	Barnes	Sheyenne River	Irrigation	427.0	341.0	9- 5-73	Approved
1977	United Power Association - Cooperative Power Association - Elk River, Minnesota	McLean	Missouri River	Industrial	15,000.0		9-20-73	Approved
1978	Stegner, William - Rhame	Bowman	Intermittent Tributary, Deep Creek & Little Missouri River	Irrigation	240.0	58.0	9-26-73	Approved
1979	Stegner, William - Rhame	Bowman	Intermittent Tributary, Deep Creek & Little Missouri River	Irrigation	240.6	76.6	9-26-73	Approved
1980	Boyko, Dan - Ruso	McLean	Ground Water	Irrigation	678.9	452.6	9-25-73	Approved
1981	Wanner, Edward J. - Dickinson	Stark	Intermittent Tributary, Heart River	Stockwater Fish & Wildlife	34.8 storage 14.6 annual use		10- 3-73	Approved
1982	Seidler, Glenn G. - Garrison	McLean	Lake Sakakawea	Irrigation	180.0	103.0	9-24-73	Approved
1983	Wise, John - Golva	Golen Valley	Intermittent Tributary, Bullion Creek & Little Missouri River	Irrigation	79.0	79.0	9-27-73	Approved
1984	J. T. Ranch - Livona Station	Emmons	Oahe Reservoir	Irrigation	537.8	268.9	10- 1-73	Approved
1985	White, Eugene - Dawson	Kidder	Ground Water	Irrigation	858.8	572.5	10- 5-73	Approved
1986	Farney, Tom - White Earth	Williams	Lake Sakakawea	Irrigation	374.0	187.0	10- 9-73	Approved
1987	Graner, Leland - Huff	Morton	Oahe Reservoir	Irrigation	220.6	110.3	10-10-73	Approved
1988	Salter, Lloyd - Menoken	Burleigh	Ground Water	Irrigation	430.2	286.8	10-10-73	Approved

STATE OF NORTH DAKOTA

23

1989	Dahl, Norman R. - McHenry	Griggs	Ground Water	Irrigation	950.8	475.4	10-11-73	Approved
1990	Dietz, Richard - Sentinel Butte	Golden Valley	Intermittent draws, Garner Creek & Little Missouri River	Irrigation	63.0	63.0	10-11-73	Approved
1991	Wachter Ranch - Bismarck	Oliver	Missouri River	Irrigation	820.2	410.1	10- 9-73	Approved
1992	Albers, Donald D. - Center	Oliver	Missouri River	Irrigation	206.0	103.0	10-10-73	Approved
1993	Froebe, Wendell Paul - Bismarck	Morton	Missouri River	Irrigation	36.0	32.0	10-12-73	Approved
1994	Brewster, James D. - Mandan	Morton	Chantopeta Creek Trib. to Cannonball River	Irrigation	60.0	60.0	9- 5-73	Approved
1995	State Game & Fish Department - Bismarck	Hettinger	Indian Creek Tributary to Cannonball River	Recreation	2,640.0 storage 705.0 annual use		10-18-73	Approved
1996	Dramstad, James - Binford	Griggs	Ground Water	Irrigation	320.0	160.0	10-19-73	Approved
1997	Montana-Dakota Utilities - Bismarck	Mercer	Brush Creek, S. Coyote Creek & Knife River	Industrial	47,600.0 storage 22,500.0 annual use		10-11-73	Withdrawn
1998	Cussons, Barton W. - Cooperstown	Griggs	Sheyenne River	Irrigation	159.9	159.9	10-18-73	Approved
1999	Rochstad, Norman - Williston	Williams	Intermittent draw trib. to L. Muddy Creek (Montana)	Irrigation	35.0	35.0	10-26-73	Approved
2000	Ptacek, Lloyd - Cegswell	Sargent	Ground Water	Irrigation	320.0	160.0	11- 1-73	Pending
2001	Halvorson, Ronald - McHenry	Griggs	Ground Water	Irrigation	560.0	280.0	10-31-73	Approved
2002	Ward Farm - Bismarck	Burleigh	Ground Water	Irrigation	379.2	189.6	10-30-75	Approved
2003	Salter, R. A. & Keith - Menoken	Burleigh	Ground Water	Irrigation	916.4	610.9	10-30-73	Approved
2004	Stokka, David - Cooperstown	Griggs	Ground Water	Irrigation	480.0	320.0	11-23-73	Approved

WATER PERMITS (Continued)
FISCAL YEAR 1973—PENDING APPLICATIONS

No.	Name and Address	County	Source	Class of Permit	Acres-Foot	Acres	Date of Claim	Status
2005	Fricenc, Francis - Milnor	Ransom	Ground Water	Irrigation	240.0	160.0	11-27-73	Approved
2006	Hornann, Fred - Medina	Stutsman	Ground Water	Irrigation	661.2	330.6	11-27-73	Pending
2007	Agnew, Milton - Menoken	Burleigh	Ground Water	Irrigation	216.0 (325.0 pending)	216.0 (159.0 pending)	11-19-73	Approved
2008	Bottineau Winter Park - Bottineau	Bottineau	Non contributing area Souris River	Industrial	150.0		11-19-73	Approved
2009	Finneman, Robert - Golva	Golden Valley	Unnamed tributaries & Garner Creek, Little Missouri River	Irrigation	134.7	134.7	11-19-73	Approved
2010	Haak, Norman & Arlene - Oakes	Dickey	Ground Water	Irrigation	240.0	160.0	12- 4-73	Approved
2011	Hoehouse, Myles - Lisbon	Ransom	Ground Water & Sheyenne River	Irrigation	383.5	303.5	11-20-73	Approved
2012	Lambrecht, William - Lisbon	Ransom	Sheyenne River	Irrigation	116.5		11-28-73	Approved
2013	Boeshans, Wayne - Beulah	Mercer	Lake Sakakawea	Irrigation	1,855.0	927.5	12- 3-75	Approved
2014	Borz, Walter - Dunn Center	Dunn	Intermittent Draw & Spring Creek, Knife River	Irrigation	58.0	58.0	12- 7-73	Approved
2015	Richter, Victor J. - Menoken	Burleigh	Ground Water	Irrigation	202.0 (658.8 pending)	135.0 (295.4 pending)	12-10-73	Approved
2016	Salzsieder, Edward - Edgeley	LaMoure	Ground Water	Irrigation	120.0	120.0	12-12-73	Approved
2017	Anstrom, Wallace & John - Baldwin	Burleigh	Ground Water	Irrigation	640.0	320.0	12-27-73	Approved

2018	Schwab, Lester - Englevale	Ransom	Ground Water	Irrigation	465.0	310.0	12-31-73	Approved
2019	Boyd, Robert J. - Mckenzie	Burleigh	Ground Water	Irrigation	471.0	314.0	1- 3-74	Approved
2020	Fetzer, Melvin - Wishek	McIntosh	Ground Water	Irrigation	353.0	285.0	12-31-73	Approved
2021	Andahl, Ronald & Paul - Bismarck	Burleigh	Ground Water	Irrigation	1,197.2	598.6	1-10-74	Approved
2022	Folmer, Russel - Wing	Burleigh	Ground Water	Irrigation	238.1	190.5	1-21-74	Approved
2023	Barczyk, Marlin E. - Wilson	Burleigh	Missouri River	Irrigation	338.2	169.1	1-22-74	Pending
2024	Brandenburg, Donald - Edgeley	LaMoure	Ground Water	Irrigation	282.0	141.0	1- 4-74	Pending
2025	Raynaas, Lui Jon - Turtle Lake	McLean	Ground Water	Irrigation	112.5	75.0	12-11-73	Approved
2026	Fox, Jack - Bismarck	Burleigh	Missouri River	Irrigation	118.2	59.1	2- 1-74	Pending
2027	Mittlesad, James - Killedeer	Dunn	Ground Water	Irrigation	180.0	180.0	1-15-74	Approved
2028	Kubik, George - Manning	Dunn	Knife River	Irrigation	134.0	134.0	1-29-74	Approved
2029	Hauck, Raymond N. - Richardton	Dunn	Knife River	Irrigation	93.0	93.0	1-29-74	Approved
2030	Ferebee, Truman - Halliday	Dunn	Ground Water	Irrigation	131.0	131.0	2- 1-74	Approved
2031	Beard, Francis E. - Arvilla	Grand Forks	Ground Water	Irrigation	20.0	20.0	2- 6-74	Approved
2032	Krenz, Darwin - Williston	Williams	Lake Sakatawea	Irrigation	250.0	124.4	2- 7-74	Approved
2033	Kartes, Charles - Dickey	LaMoure	Ground Water	Irrigation	970.0	647.0	2-11-74	Approved
2034	Krueger, Allen - Dawson	Kidder	Ground Water	Irrigation	1,199.8	685.6	2-11-74	Approved

WATER PERMITS (Continued)
FISCAL YEAR 1973—PENDING APPLICATIONS

No.	Name and Address	County	Source	Class of Permit	Acre-Feet	Acres	Date of Claim	Status
2035	Aarestad, Casper Jr. - Cooperstown	Griggs	Ground Water	Irrigation	468.0	312.0	2- 5-74	Approved
2036	Oster, Ernest O. - Hazen	Mercer	Ground Water	Irrigation	528.0	352.0	2-11-74	Approved
2037	Leininger, Kenneth J. - Bimford	Griggs	Ground Water	Irrigation	460.0	320.0	2-11-74	Approved
2038	Albertson, Lyle - LaMoure	LaMoure	Ground Water	Irrigation	240.0	160.0	2-19-74	Approved
2039	Ramsey, Gary - Bimford	Griggs	Ground Water	Irrigation	957.0	638.0	2-20-74	Approved
2040	Landgren, Marvin T. - Wilton	McLean	Missouri River	Irrigation	525.0	262.6	2-20-74	Approved
2041	Kukla, Walter S. - Killdeer	Dunn	Intermittent channel trib. to Spring Creek, Knife River	Irrigation	77.0	77.0	2-19-74	Approved
2042	Bowman, Albert - Rhame	Bowman	Coyote Creek Tributary to Little Missouri River	Irrigation	127.9	127.9	2-22-74	Approved
2043	Hagen, Kenneth S. - Cooperstown	Griggs	Ground Water	Irrigation	320.0	160.0	2-25-74	Pending
2044	Bailey, James W. - Cooperstown	Griggs	Ground Water	Irrigation	953.9	476.9	2-25-74	Pending
2045	Hagen, Dean - Cooperstown	Griggs	Ground Water	Irrigation	322.2	161.1	2-25-74	Pending
2046	Edwards, Alan - Denbigh	McHenry	Ground Water	Irrigation	770.0 (226.0 pending)	510.0 (133.0 pending)	2- 8-74	Approved
2047	Lange, Donald - Baldwin	Burleigh	Missouri River	Irrigation	656.6	328.3	2- 5-74	Approved
2048	Larson, Carl & Nesvig, Leslie - LaMoure	LaMoure	Ground Water of James River	Irrigation	300.0	200.0	2- 8-74	Approved

2049	Pembina County Pioneer Rest Home — Bathgate	Pembina	Pembina & Red Rivers	Industrial	612.0	2-19-74	Approved
2050	Decker, Arthur - South Heart	Stark	Intermittent Draw Trib.	Irrigation	86.8	2-20-74	Approved
2051	Stegner, William - Rhame	Slope	Deep Creek Tributary to Little Missouri River	Irrigation	994.0	2-25-74	Pending
2052	Texaco, Inc. - Keene	McKenzie	Ground Water	Industrial	.71	2-28-74	Approved
2053	Schoenert, Robert F. - Bismarck	Burleigh	Ground Water & Burnt Creek, Missouri River	Irrigation	587.0	2-28-74	Approved
2054	Majer Ranch - Hannover	Oliver	Intermittent tributary Sweet Briar Creek, Heart River	Irrigation	18.2	3- 4-74	Approved
2055	Edgeley, City of - Edgeley	LaMoure	Ground Water	Municipal	115.0	1-14-74	Approved
2056	Olson, Jerry - Max	McLean	Ground Water	Irrigation	202.5	1-15-74	Approved
2057	Hansen, Allen - Ludden	Dickey	Ground Water	Irrigation	240.0	1-17-74	Approved
2058	Oberlander, Herbert - Stanton	Mercer	Ground Water	Irrigation	150.0	2- 1-74	Approved
2059	Oxbow Country Club - Fargo	Cass	Red River	Irrigation	155.0	2-11-74	Approved
2060	Kyllo, Robert - McCanna	Grand Forks	Ground Water	Irrigation	861.0	2-25-74	Approved
2061	Krueger, James & Walter - McKenzie	Burleigh	Ground Water	Irrigation	4,188.8	1- 9-74	Approved
2062	Bodvig, Marvin - Tappen	Kidder	Ground Water	Irrigation	684.0	3-18-74	Approved
2063	Overby, Byron - Bimford	Griggs	Ground Water	Irrigation	155.0 (784.2 354.6 pending)	4- 1-74	Approved
2064	Ruff, Lloyd - Edgeley	LaMoure	Ground Water	Irrigation	135.0 (265.0 pending)	1-30-74	Approved

WATER PERMITS (Continued)
FISCAL YEAR 1973—PENDING APPLICATIONS

No.	Name and Address	County	Source	Class of Permit	Acres-Foot	Acres	Date of Claim	Status
2065	Madsen, James - Jamestown	Stutsman	Ground Water	Irrigation	448.8	299.2	3-18-74	Approved
2066	Krebsbach, Ralph M. - Warwick	Eddy	Ground Water	Irrigation	468.0	312.0	3- 8-74	Approved
2067	McLean County Land Company - Minot	McLean	Ground Water	Irrigation	202.5	135.0	3-25-74	Approved
2068	Dvirnak, Alick & John - Kuldeer	Dunn	Intermittent draw trib. to Spring Creek, Knife River	Irrigation	58.0	58.0	3-21-74	Approved
2069	Bartleson, Elmer - New Town	Mountain	Little Knife River	Irrigation	31.9	31.9	3-27-74	Approved
2070	McCullough, Steve - Oakes	LaMoure	James River	Irrigation	228.0	152.0	4- 1-74	Approved
2071	Frey, Carl - Jamestown	Stutsman	Ground Water	Irrigation	733.2	488.8	4- 1-74	Approved
2072	Moser, Kenneth - Pollock, S.D.	Emmons	Oahe Reservoir	Irrigation	1,044.0	522.0	4- 2-74	Approved
2073	Grenz, Leo - Braddock	Emmons	Long Lake Creek tributary to Long Lake	Irrigation	66.0	66.0	2-14-75	Approved
2074	Burke, Monty McKenzie	Burleigh	Ground Water	Irrigation	1,148.4	765.6	4- 5-74	Approved
2075	El Paso Natural Gas Co. - El Paso, Texas	Dunn	Lake Sakakawea	Industrial	71,816.0		4- 2-74	Withdrawn
2076	Wachter Ranch - Bismarck	Burleigh	Ground Water	Irrigation	269.0	179.1	4- 9-74	Approved
2077	Serr, Henry - Hazelton	Emmons	Ground Water of Oahe Reservoir	Irrigation	450.0	225.0	4- 9-74	Approved
2078	Miner, Richard - Grand Forks	Griggs	Sheyenne River	Irrigation	63.0	63.0	3-11-74	Approved

2079	Makeeff, Russell - Mercer	McLean	Ground Water	Irrigation	234.0	156.0	3-29-74	Approved
2080	Baeth, R. H. - McKenzie	Burleigh	Ground Water	Irrigation	607.0 (86.5 pending)	405.0 (57.3 pending)	4-15-74	Approved
2081	Saeman, James - Wing	Burleigh	Ground Water	Irrigation	349.3	262.9	4-15-74	Approved
2082	Schmaltz, Adam - Tappen	Kidder	Ground Water	Irrigation	234.0	156.0	4-17-74	Approved
2083	Natural Gas Pipeline Co. - Chicago, Illinois	Dunn	Lake Sakakawea	Industrial	70,000.0		4-17-74	Pending
2084	Deizer, Raymond & Betty J. - Bismarck	Burleigh	Intermittent Streams tributary to Burnt Creek	Irrigation	216.0	216.0	4-17-74	Approved
2085	Renner, Ted - Dickinson	Stark	Heart River	Irrigation	14.4	14.4	4-17-74	Approved
2086	Gorrell, Jay - Trotters	McKenzie	Intermittent Creek Trib. to Smith Creek, Yellowstone River	Irrigation	142.5	142.5	4-15-74	Approved
2087	Omdal, Clifford - Binford	Griggs	Ground Water	Irrigation	175.0	130.0	4-22-74	Approved
2088	Nielsen, LeRoy - Mercer	McLean	Ground Water	Irrigation	691.5	461.0	4-22-74	Approved
2089	Enzi, Kriss W. - Braddock	Emmons	Ground Water & Long Lake Creek	Irrigation	305.0	156.0	1-25-74	Approved
2090	N. Rockford Golf Club - New Rockford	Eddy	Ground Water	Irrigation	20.0	65.82	4- 8-74	Approved
2091	Streich, Orrin - Oakes	Dickey	Ground Water	Irrigation	200.0	135.0	4-23-74	Approved
2092	Werner, Marvin - LaMoure	LaMoure	Ground Water	Irrigation	315.0	210.0	4-25-74	Approved
2093	Coenen, Jackie - Warwick	Benson	Ground Water	Irrigation	202.0	158.0	4-30-75	Approved
2094	Cline, Harry - Oakes	Sargent	Ground Water	Irrigation	480.0	320.0	5- 3-74	Approved

**WATER PERMITS (Continued)
FISCAL YEAR 1973—PENDING APPLICATIONS**

No.	Name and Address	County	Source	Class of Permit	Acre-Feet	Acres	Date of Claim	Status
2095	Daniels, Thomas N. - Oakes	Dickey	Ground Water	Irrigation	480.0	480.0	5- 3-74	Approved
2096	Kvamme, Sievert- Ruso	McLean	Ground Water	Irrigation	438.6	292.4	5.13.74	Approved
2097	Bohrer, Duane - McKenzie	Burleigh	Ground Water	Irrigation	1,057.0	705.0	3-20-74	Approved
2098	Walker, Lawrence C. T. Oberon	Benson	Ground Water	Irrigation	420.0	280.0	4- 1-74	Approved
2099	Kessel, T. & Hocking, C. W. - LaMoure	LaMoure	Ground Water	Irrigation	960.0	640.0	5-15-74	Approved
2100	Wittinger, Tony - Manning	Dunn	Knife River	Irrigation	109.0	109.0	5-22-74	Approved
2101	Schmidt, Nick Breien	Morton	Dogtooth & Chantopeta Creeks, Cannonball River	Irrigation	132.8	141.6	5- 2-74	Approved
2102	Klabunde, Harold - Emmet	McLean	Ground Water	Irrigation	448.0	298.7	12- 5-74	Approved
2103	Roche, Mike - Manning	Dunn	Knife River	Irrigation	125.0	125.0	5-30-74	Approved
2104	Rubland, Leo - Emmet	McLean	Lake Sakakawea	Irrigation	960.0	564.0	5-30-74	Pending
2105	Ladish Malting Co. - Milwaukee, Wisconsin	Stutsman	Ground Water	Industrial	1,680.0		5- 6-74	Approved
2106	Hafer, Hilmer & Marvin - Beulah	Mercer	Lake Sakakawea and Intermittent Draw	Irrigation	945.0	483.0	6- 3-74	Approved
2107	Diocese of Bismarck Trust and Mary College, Inc. Trust - Bismarck	Burleigh	Ground Water	Irrigation	825.0	550.8	6-19-74	Approved
2108	Hovland, Harvey C. - Northwood	Grand Forks	Ground Water	Irrigation	160.0	160.0	6-26-74	Approved

2109	Brandenburg, Emil - Edgeley	LaMoure	Ground Water	Irrigation	135.0	135.0	4-23-74	Approved
2110	Pare, Howard L. - Tolna	Benson	Ground Water	Irrigation	584.0	389.0	5-29-74	Approved
2111	Lies, Hubert A. - New Rockford	Eddy	Ground Water	Irrigation	189.0	126.0	6-21-74	Approved
2112	Volker, David - Bimford	Griggs	Ground Water	Irrigation	960.0	480.0	6-25-74	Pending
2113	Trend Exploration Limited and Oyloe, Anna C. - Williston	Williams	Ground Water	Industrial	4.8		6-21-74	Approved
2114	Trend Exploration Limited and Haugen, Orville S. - Buford	Williams	Ground Water	Industrial	4.8		6-21-74	Approved
2115	Froedtert Malt Corporation - Milwaukee, Wisconsin	Richland	Ground Water	Industrial	1,125.0		7- 8-74	Approved
2116	Sletten, Dennis and Robert - Ryder	Ward	Ground Water	Irrigation	420.0 (180.0 pending)	451.5	8-12-74	Approved
2117	Pavlenko, William - Killdeer	Dunn	Ground Water	Irrigation	120.0	80.0	7-16-74	Approved
2118	Schmidt, Joey - LaMoure	LaMoure	Ground Water	Irrigation	555.0	370.0	7-15-74	Approved
2119	Lidgerwood City of - Lidgerwood	Richland	Ground Water	Municipal	141.0		8-18-74	Approved
2120	Parrish, Lloyd - Watford City	McKenzie	Unnamed Draw and L. Missouri River	Irrigation	22.4	22.4	7-19-74	Approved
2121	Nagel, Elias J. - Linton	Emmons	Oahe Reservoir	Irrigation	96.4	48.2	6-20-74	Approved
2122	Anderson, Floyd G. & Mary L. Ruso	McLean	Ground Water	Irrigation	370.0	246.6	7-22-74	Approved
2123	Arctic Farm Company - Walhalla	Pembina	Pembina River, trib. to Red River	Irrigation	288.2	288.2	8- 1-74	Approved
2124	Diocese of Bismarck Trust and Mary College, Inc. Trust - Bismarck	Burleigh	Ground Water	Irrigation	936.0	624.0	8-1-74	Approved

WATER PERMITS (Continued)
FISCAL YEAR 1973—PENDING APPLICATIONS

No.	Name and Address	County	Source	Class of Permit	Acre-Feet	Acres	Date of Claim	Status
2125	Gunsch, Ronald E.- Zap	Mercer	Ground Water	Irrigation	394.0	262.5	9- 1-74	Approved
2126	Georgeson, Quentin- New Rockford	Eddy	Ground Water	Irrigation	490.0	327.0	7- 2-74	Approved
2127	Stegner, William A.- Rhome	Bowman	Deep Creek trib. to L. Missouri River	Irrigation	60.0	117.6	5-13-74	Pending
2128	Best, Lloyd G.- Watpeton	Richland	Ground Water	Irrigation	840.0 (630.0 Pending)	560.0 (420.0 Pending)	9- 6-74	Approved
2129	Sheldon, George, Robert and William - Tioga	Williams	Lake Sakakawea	Irrigation	300.0	160.0	6-13-74	Approved
2130	Peters, Neil - Sutton	Griggs	Ground Water	Irrigation	930.0 (200.0 Pending)	836.0	7- 2-74	Approved
2131	Conn, David- Livona Station, Bismarck	Emmons	Oahe Reservoir	Irrigation	91.0	45.5	7-11-74	Pending
2132	Schiff, George - Ruso	McLean	Ground Water	Irrigation	263.0	143.6	7-17-74	Pending
2133	Schiff, George - Ruso	McLean	Ground Water	Irrigation	834.2	417.1	7-22-74	Pending
2134	Wallace, Donald C. Family Trust - Long Beach, California	McLean	Ground Water	Irrigation	316.0	156.0	12-10-74	Pending
2135	Beierle, Thomas W. - Mercer	McLean	Ground Water	Irrigation	223.8	149.2	8- 1-74	Pending
2136	Halliday, City of - Halliday	Dunn	Ground Water	Irrigation	480.0		8-12-74	Approved
2137	Blickensderfer, Paul - Mott	Hettinger	Intermittent Draw, trib. to Cannonball River	Stockwater Fish & Wildlife	120.0 Stor. 64.8 A. Use		8-12-74	Approved

2138	McCroy, Glenn - Livona Station - Bismarck	Emmons	Oahe Reservoir	Irrigation	852.6	426.3	8-27-74	Approved
2139	Wilson, William - Coleharbor	McLean	Ground Water	Irrigation	468.0	312.0	8-15-74	Approved
2140	Dick, Gerald - Englevale	Ransom	Ground Water	Irrigation	210.0	160.0	9-1-74	Approved
2141	Richman, Willard R. - Montpelier	Stutsman	Ground Water	Irrigation	640.0	312.0	6-9-75	Pending
2142	Tuttle, City of - Tuttle	Kidder	Ground Water	Municipal	48.0		9-1-74	Approved
2143	Hettinger Experiment Station Hettinger	Adams	Intermittent Draw, trib. to Flat Creek and North Fork of Grand River	Irrigation	159.6	159.6	9-1-74	Approved
2144	Fetting, LeRoy P. - Hebron	Mercer	Knife River and Elm River	Irrigation	526.6	526.6	9-1-71	Approved
2145	Halvorson, Vernon - Larimore	Grand Forks	Unnamed Creek, trib. to Little Goose	Recreation	63.5 Stor. 45.0 A. Use		9-9-74	Approved
2146	Diocese of Bismarck Trust and Mary College, Inc. Trust - Bismarck	Burleigh	Ground Water	Irrigation	200.0	133.0	9-10-74	Approved
2147	Slater, Agnes I. - Minot	McLean	Ground Water	Irrigation	316.0	102.0	2-28-75	Pending
2148	Dawson, Wendal - Almont	Grant	Unnamed Draw, trib. to Heart River	Irrigation	120.0	135.6	9-16-74	Approved
2149	Kelly, E. Wayne - Carrington	Foster	Ground Water	Irrigation	740.0 (100.0 Pending)	540.0 (75.0 Pending)	9-27-74	Approved
2150	Schramm, Larry - Livona Station, Bismarck	Burleigh	Ground Water	Irrigation	468.0	325.0	1-8-75	Approved
2151	Frey, Norman and Kenneth - Jamestown	Stutsman	Ground Water	Irrigation	382.0	255.0	9-17-74	Approved
2152	Sampson, Garry - Manning	Dunn	Knife River, trib. to Missouri River	Irrigation	82.0	82.0	9-24-74	Approved
2153	Falter, Russel - LaMoure	LaMoure	James River	Irrigation	19.5	13.0	9-24-74	Approved

**WATER PERMITS (Continued)
FISCAL YEAR 1973—PENDING APPLICATIONS**

No.	Name and Address	County	Source	Class of Permit	Acre-Feet	Acres	Date of Claim	Status
2154	Minot Sand and Gravel Co. - Minot	McLean	Missouri River	Industrial	250.0		9-25-74	Approved
2155	Peterson, Lynn - LaMoure	LaMoure	Ground Water	Irrigation	192.0	128.0	9-26-74	Approved
2156	Mangin, Gerald - Ellendale	LaMoure	Ground Water	Irrigation	210.0	160.0	9-27-74	Approved
2157	Klein, Dennis - LaMoure	LaMoure	Ground Water	Irrigation	202.0	135.0	9-30-74	Approved
2158	Mountain, Robert - Jamestown	Stutsman	Hintz Bros. Coulee, trib. to James River	Stockwater, Fish and Wildlife	40.6 Stor. 13.2 A. Use		10-14-74	Approved
2159	Amoco Oil Company - Mandan	Morton	Intermittent Draw, trib. to Missouri River	Industrial	60.0 Stor.		10-22-74	Approved
2160	Streich, Orrin R. - Oakes	Dickey	James River	Irrigation	480.0	480.0	9-26-74	Pending
2161	Knutson, Richard D. - Oakes	Dickey	Ground Water	Irrigation	404.0	270.0	10-11-74	Approved
2162	Knutson, Robert - Oakes	Dickey	Ground Water	Irrigation	202.0	135.0	4- 2-75	Approved
2163	Binford, City of - Binford	Griggs	Ground Water	Municipal	86.0		10-18-74	Approved
2164	Iszler, Milton - Gackle	Stutsman	Ground Water	Irrigation	640.0	312.0	10-21-74	Pending
2165	LaPlant, Dolar - Binford	Griggs	Ground Water	Irrigation	921.0	614.0	10-24-74	Pending
2166	Meyer, Lawrence - Minot	McHenry	Ground Water	Irrigation	284.0	156.0	10-25-74	Approved
2167	Aberle, Joseph - Minot	McHenry	Ground Water	Irrigation	240.0	156.0	10-28-74	Pending

STATE OF NORTH DAKOTA

35

2168	Hufnagel, Walter - Tappen	Kidder	Ground Water	Irrigation	516.1	344.1	10-29-74	Pending
2169	Zacharias, Keith - Kathryn	Barnes	Ground Water	Irrigation	320.0	260.0	6-12-74	Pending
2170	Gaier, Mrs. Alvina M. - Jamestown	Barnes	Ground Water	Irrigation	240.0	160.0	11- 4-74	Approved
2171	Steichen, Dwayne - Tappen	Kidder	Ground Water	Irrigation	648.6	432.4	11-13-74	Pending
2172	White, Mrs. Caroline G. - Dawson	Kidder	Ground Water	Irrigation	150.0	100.0	11-18-74	Approved
2173	Wilson, City of - Wilton	McLean	Ground Water	Municipal	200.0		11- 7-74	Approved
2174	Crary, City of - Crary	Ramsey	Ground Water	Municipal	48.4		5- 5-75	Approved
2175	Glenfield, City of - Glenfield	Foster	Ground Water	Municipal	201.53		11-20-74	Pending
2176	United Power Association - Cooperative Power Association - Elk River, Minnesota	McLean	Ground Water	Industrial	168.0		11-25-74	Approved
2177	Trestle Valley Recreation Area, Inc. - Minot	Ward	Ground Water	Recreation	3.0		12- 3-74	Approved
2178	Burke, Monty - McKenzie	Burleigh	Ground Water	Irrigation	202.0	135.0	12- 5-74	Approved
2179	Basin Electric Power Corporation	Mercer	Lake Sakakawea	Industrial	19,000.0		12-13-74	Pending
2180	Meyer, Henry - Flasher	Morton	Ground Water	Irrigation	175.0	117.0	12- 6-74	Approved
2181	Hokana, John M. - Oakes	Dickey	Ground Water	Irrigation	405.0	270.0	12- 9-74	Approved
2182	Kamoni, Allen - Fertibone	Kidder	Ground Water	Irrigation	375.0	250.0	12-10-74	Approved
2183	Jobs, Marvin Fort Totten	Benson	Ground Water	Irrigation	292.0	195.0	12- 9-74	Approved
2184	Hansen, Allen - Ludden	Dickey	James River	Irrigation	135.0	135.0	11- 4-74	Approved

WATER PERMITS (Continued)
FISCAL YEAR 1973—PENDING APPLICATIONS

No.	Name and Address	County	Source	Class of Permit	Acre-Feet	Acres	Date of Claim	Status
2185	Reid, Warran - Bismarck	Burleigh	Missouri River	Irrigation	352.0	176.0	12-13-74	Approved
2186	Braun, Benjamin B. - Turtle Lake	McLean	Ground Water	Irrigation	525.0	350.0	12-16-74	Approved
2187	Vculek, Bernard - Crete	Sargent & Ransom	Ground Water	Irrigation	1,145.0 (67.0 Pending)	810.0	12-17-74	Approved
2188	Frauenberg, Albert - LaMoure	LaMoure	Ground Water	Irrigation	202.0	135.0	12-18-74	Approved
2189	Vculek, Francis - Crete	Sargent	Ground Water	Irrigation	202.0	135.0	12-23-74	Approved
2190	Greenmyer, John - Sorum	Sargent	Ground Water	Irrigation	202.0	135.0	12-24-75	Approved
2191	Thorpe, Lawrence - Guelph	Dickey	James River and Ground Water	Irrigation	634.8	427.0	1- 3-75	Approved
2192	Kenmet, Alton - Teppen	Kidder	Ground Water	Irrigation	458.0	305.0	1- 6-75	Pending
2193	McCullough, Calvin - Oakes	Dickey	Ground Water	Irrigation	135.0 (505.0 Pending)	135.0 (185.0 Pending)	1- 7-75	Approved
2194	Schaner, Siegfried - Hålliday	Dunn	Ground Water	Irrigation	324.0	216.0	1- 8-75	Approved
2195	Vculek, Francis - Crete	Sargent	Ground Water	Irrigation	1,280.0	640.0	1- 8-75	Pending
2196	Leppke, DeWayne A. - Carrington	Foster	Ground Water	Irrigation	315.0 (551.8 Pending)	210.0 (223.4 Pending)	1- 8-75	Approved
2197	Eberle, Joseph M. - Hague	Emmons	Unnamed Stream trib. to Missouri River	Stockwater Fish & Wildlife	38.0 Stor. 15.0 A.Use		4-21-75	Approved

2198	Sisters of Mary of the Presentation - Valley City	Barnes to Red River	Sheyenne River, trib.	Irrigation	40.0	40.0	1-10-75	Approved
2199	Schaper, Wilfred - Hilliday	Dunn	Ground Water	Irrigation	160.5	107.0	1-15-75	Approved
2200	Sauer, Vincent - Tappen	Kidder	Ground Water	Irrigation	220.0 (120.0 Pending)	270.0	1-20-75	Approved
2201	Kenpenich, Mark and Werc, Allan - Bowman	Bowman	Branch of Spring Creek, trib. to North Fork Grand River	Irrigation	113.0	112.8	7-16-75	Pending
2202	Hartman, George - Killdeer	Dunn	Ground Water	Irrigation	360.0	240.0	1-16-75	Approved
2203	Hanse, Larry R. - Oakes	Dickey	Ground Water	Irrigation	1,323.0	822.0	1-22-75	Pending
2204	Brandt, Dale - Granville	McHenry	Ground Water	Irrigation	405.0	220.0	1-22-75	Approved
2205	Johnson, Larry - Alamo	William	Ground Water	Irrigation	158.1	105.4	1-22-75	Approved
2206	Hanson, Walter - Warwick	Eddy	Sheyenne River, trib. to Red River	Irrigation	75.0	75.0	1-23-75	Approved
2207	Hanson, Robert V. - Turtle Lake	McLean	Coal Lake Coulee, trib. to Missouri River	Irrigation	70.0	168.6	1-23-75	Approved
2208	Herman, Wilfred - Golden Valley	Mercer	Spring Creek, trib. to Knife River	Irrigation	247.2	247.2	1-22-75	Approved
2209	Weisenhaus, Glenn - Lisbon	Ransom	Ground Water	Irrigation	202.0	135.0	3- 7-75	Approved
2210	Watson, Ross J. - New Rockford	Eddy	Ground Water	Irrigation	282.0	204.7	12-24-74	Approved
2211	Mittelsadt, Ray - Dunn Center	Dunn	Ground Water	Irrigation	960.0	480.0	5-28-75	Pending
2212	Johnsrud, Harold - Watford City	McKenzie	Unnamed Branch of Cherry Creek, trib. to L. Missouri River	Irrigation	35.0	25.8	10- 4-74	Approved

WATER PERMITS (Continued)
FISCAL YEAR 1973—PENDING APPLICATIONS

No.	Name and Address	County	Source	Class of Permit	Acre-Feet	Acres	Date of Claim	Status
2213	Heck, Gordon W. and Bernice - Tolna	Benson	Ground Water	Irrigation	442.0	295.4	2- 5-75	Approved
2214	Locken, David - Oakes	Dickey	Ground Water	Irrigation	480.0	320.0	2- 6-75	Pending
2215	Blitz, Constant - Edgeley	LaMoure	Ground Water	Irrigation	320.0	160.0	4-16-74	Pending
2216	Bacon, Doris - Marmarth	Slope	Little Missouri River	Irrigation	32.4	32.4	2-11-75	Approved
2217	Helbling, Frank - St. Anthony	Morton	Ground Water	Irrigation	285.0 (240.0 Pending)	190.0	2-14-75	Approved
2218	Miller, William - Huff	Morton	Oahe Reservoir	Irrigation	334.0	167.2	2-18-75	Approved
2219	Wagner, Ronald - Englevale	Ransom	Ground Water	Irrigation	996.0 (650.0 Pending)	665.0	2-21-75	Approved
2220	Olson, Richard - Binford	Griggs	Ground Water	Irrigation	320.0	160.0	2-25-75	Pending
2221	Ficenee, Francis - Milnor	Ransom	Ground Water	Irrigation	203.0	135.0	2-21-75	Approved
2222	Kylio, Robert - McCanna	Grand Forks	Ground Water	Irrigation	310.2	206.8	2-14-75	Approved
2223	Jensen, Earl R. - Stanley	Mountrail	Ground Water	Irrigation	184.0	122.5	2-25-75	Approved
2224	Ravnaas, Lui Jon - Turtle Lake	McLean	Ground Water	Irrigation	190.0	156.0	1-28-75	Pending
2225	Good, Lelan C. - Sheldon	Ransom	Ground Water	Irrigation	360.0	240.0	3- 3-75	Approved

STATE OF NORTH DAKOTA

2226	Huether, William, Jr. - Lisbon	Ransom	Ground Water	Irrigation	202.0	135.0	3- 4-75	Approved
2227	Schneider, Leroy - Verona	Ransom	Ground Water	Irrigation	608.0 (608.0 Pending)	405.0	3- 4-75	Approved
2228	Nelson, Leif E., Jr. - Heimdal	Wells	Norway Lake	Irrigation	105.3	105.3	3- 4-75	Approved
2229	Glen Ullin, City of - Glen Ullin	Morton	Ground Water	Municipal	180.0		3- 7-75	Approved
2230	Rotenberger, Ronald G. - Milnor	Ransom	Ground Water	Irrigation	640.0	320.0	3-10-75	Pending
2231	Schwab Farms - Englevale	Ransom	Ground Water	Irrigation	615.0 (210.0 Pending)	410.0 (140.0 Pending)	3-10-75	Approved
2232	Rychner, Elmer - Killdeer	Dunn	Intermittent Draws, trib. to Little Missouri River	Irrigation	55.0	55.0	3-12-75	Approved
2233	Hokana, Stanley - Oakes	Dickey	Ground Water	Irrigation	202.0	135.0	3-17-75	Approved
2234	Hanson, Clarence J. - Ruso	McLean	Ground Water	Irrigation	740.0	466.0	3-18-75	Pending
2235	Tri-County Water users, Inc. - Lakota	Grand Forks	Ground Water	Industrial (Rural Dom.)	340.0		3- 7-75	Pending
2236	Bowman Golf Association - Bowman	Bowman	Intermittent trib. to Grand River	Irrigation	65.0	65.0	3-12-75	Approved
2237	Hendrickson, Dennis - Montpelier	Stutsman	James River	Irrigation	165.8	165.8	3-18-75	Approved
2238	Wescam, Donald - Jamestown	Stutsman	Ground Water	Irrigation	435.0	290.0	3-18-75	Approved
2239	Paradise Point Association - Williston	Williams	Lake Sakakawea	Industrial (Rural Dom.)	40.0		3-19-75	Pending
2240	Rehovsky, Wayne L. - Oakes	Dickey	James River	Irrigation	135.0	135.0	3-19-75	Approved
2241	Huso, Herluf - Axtel	Griggs	Pickarel Lake Creek, Trib. to Sheyenne River	Irrigation	110.0	110.0	3-21-75	Approved

WATER PERMITS (Continued)
FISCAL YEAR 1973—PENDING APPLICATIONS

No.	Name and Address	County	Source	Date of Claim	Acre-Feet	Acres	Date of Claim	Status
2242	Schmit, Thomas W. and Richard - Oakes	Dickey	Ground Water	Irrigation	258.0	129.0	3-24-75	Pending
2243	Grotelueschan, Wayne and Raymond - Ludden	Dickey	James River	Irrigation	379.0	379.0	3-24-75	Approved
2244	Ridl, Anton J. - Dunn Center	Dunn	Spring Creek, trib. to Knife River	Irrigation	38.0	38.0	3-24-75	Approved
2245	Pertus, Kermit - Marshall	Dunn	Coyote Creek and the Knife River	Irrigation	130.0	130.0	3-24-75	Approved
2246	Bosing Aerospace Company - Seattle, Washington	Cavalier	Ground Water	Industrial	2.0		3-24-75	Approved
2247	Lower Yellowstone Irrigation District No. 2 Sidney, Montana	McKenzie	Missouri River	Irrigation	1,585.6	792.8	7-25-75	Approved
2248	Hansen, Allen - Ludden	Sargent	Ground Water	Irrigation	202.0	135.0	11- 4-74	Approved
2249	Huebner, William - Oakes	Dickey	Ground Water	Irrigation	474.0	316.0	4- 1-75	Approved
2250	Huso, Oscar, Jr. - Aneta	Griggs	Pickrel Lake Creek trib. to Sheyenne River	Irrigation	23.0	23.0	4- 2-75	Approved
2251	Gunklison, Julian - Zahl	Williams	Ground Water	Irrigation	203.0	153.0	4- 2-75	Approved
2252	Turtle Mountain Band of Chippewa Indians - Belcourt	Rolette	Ground Water	Municipal	580.59		4- 3-75	Pending
2253	Kerzmann, Wilfred - Emmet	McLean	Ground Water	Irrigation	405.0	270.0	4- 2-75	Approved
2254	Simmers, Francis - Jamestown	Stutsman	James River	Irrigation	671.0	305.8	4- 3-75	Pending
2255	Simmers, Robert H. - Jamestown	Stutsman	James River	Irrigation	300.0	152.8	4- 3-75	Pending

2256	Kliever, Kenneth - LaMoure	LaMoure	Ground Water	Irrigation	372.0	248.0	4-3-75	Pending
2257	Baker, Gerald - Lidgerwood	Sargent	Ground Water	Irrigation	160.0	160.0	4-7-75	Pending
2258	Daniels, Thomas H. - Oakes	Dickey	Ground Water	Irrigation	320.0	160.0	4-10-75	Pending
2259	Nelson, Selmer T. - Spring Brook	Williams	Intermittent Draw, trib. to L. Muddy River	Stockwater Fish & Wildlife	68.0 Stor. 34.2 A. Use		4-25-75	Approved
2260	Greene, Clarence J. - Tolna	Benson	Ground Water	Irrigation	405.0	270.0	4-15-75	Approved
2261	Heimbuck, Thomas A. - Oakes	Sargent	Ground Water	Irrigation	640.0	320.0	2-19-75	Pending
2262	Minow, James G. - Sidney, Montana	McKenzie	Unnamed Branch of Bennie Pierre Creek, trib. to Yellowstone River	Irrigation	95.0	47.2	3-17-75	Pending
2263	Dolezal, Dale - Killdeer	Dunn	Intermittent Draw, trib. to Knife River	Irrigation	114.0	57.0	6-30-75	Pending
2264	Dally, Lyle W. - Jamestown	Stutsman	Ground Water	Irrigation	280.0	156.0	4-16-75	Pending
2265	Makeeff, Russell - Mercer	McLean	Ground Water	Irrigation	2,375.1	1,563.4	4-18-75	Pending
2266	Waller, Marvin B. - Warwick	Eddy	Ground Water	Irrigation	776.0	388.0	4-18-75	Pending
2267	Smith, Douglas R. - Sheyenne	Eddy	Ground Water	Irrigation	632.0	316.0	4-21-75	Pending
2268	Miller, Herbert C. - Golden Valley	Dunn	Ground Water	Irrigation	600.0	300.0	4-23-75	Pending
2269	Gasal, Wilbert - Jamestown	Stutsman	Seven-Mile Coulee, trib. to James River and Ground Water	Irrigation	712.0	357.0	4-3-75	Pending
2270	Settelmeyer, George - New Hockford	Eddy	Ground Water	Irrigation	309.0	154.5	4-22-75	Pending
2271	Dohrmann, Fred - Taylor	Stark	Intermittent Draw, trib. to Knife River	Irrigation	320.0	161.0	4-25-75	Pending

WATER PERMITS (Continued)
FISCAL YEAR 1973—PENDING APPLICATIONS

No.	Name and Address	County	Source	Class of Permit	Acre-Foot	Acres	Date of Claim	Status
2272	Schmies, Dennis - Oakes	Dickey	Ground Water	Irrigation	180.0	154.48	5-30-75	Pending
2273	Utke, William D. - Minot	McHenry	Ground Water	Irrigation	1,406.0	703.0	4-24-75	Pending
2274	Paulson, Erling - Taylor	Dunn	Intermittent Draws, trib. to Knife River	Irrigation	187.0	187.0	4-24-75	Approved
2275	Wiese, E. W. - Eldridge	Stutsman	Ground Water	Irrigation	510.0	287.6	3-18-75	Pending
2276	Mohberg, Robert - Milnor	Ransom	Ground Water	Irrigation	640.0	320.0	5- 2-75	Pending
2277	Reardon, Wayne - Medina	Stutsman	Ground Water	Irrigation	280.0	198.4	5- 5-75	Pending
2278	Goplen, Joel - Binford	Griggs	Ground Water	Irrigation	640.0	320.0	5- 8-75	Pending
2279	Butts Farming Association - Carrington	Foster	Ground Water	Irrigation	2,634.0	2,007.0	1-27-75	Pending
2280	Graves, N.A. - Carrington	Foster	Ground Water	Irrigation	607.0	454.0	5-12-75	Pending
2281	Kunick, Emil - Sentinel Butte	Golden Valley	Unnamed Branch of Elk Creek, trib. to Little Missouri River	Stockwater Fish & Wildlife	166.0 Stor. 60.0 A. Use		1-14-75	Pending
2282	Dahl, John R. - Gackle	Logan	Unnamed Lakes, trib. to James River	Irrigation	322.5	214.7	3-20-75	Pending
2283	Bjorgen, Claire E. - Westley, Montana	Divide	Ground Water	Irrigation	204.0	136.0	4- 7-75	Pending
2284	Scott, William D. - Manning	Dunn	Knife River and Wolf Creek, trib. to Knife River	Irrigation	56.0	28.0	6- 4-75	Pending
2285	Marks, Dale - Montpelier	Stutsman	Ground Water	Irrigation	251.0	125.7	6- 6-75	Pending

2286	Schlak, M. A. - Bismarck	Renville	Unnamed Tributary, trib. to Mouse River	Irrigation	520.0	260.3	6-9-75	Pending
2287	Apple Valley Cooperative Menoken	Burleigh	Ground Water	Industrial (Rural Dom.)	80.0		6-9-75	Approved
2288	Missouri West Water Systems Cooperative - Mandan	Morton	Missouri River	Industrial (Rural Dom.)	1,000.0		6-13-75	Pending
2289	Beckstrand, John K. - Warwick	Benson	Ground Water	Irrigation	240.0	156.0	5-23-75	Pending
2290	Wiese, Raymond - Oakes	Dickey	Ground Water	Irrigation	240.0	160.0	6-20-75	Pending
2291	Otter Tail Power Company - Fergus Falls, Minnesota	Stutsman	Ground Water	Industrial	0.03		6-20-75	Pending
2292	Montana-Dakota Utilities Co. - Bismarck	Mercer	Missouri River	Industrial	1,050.0 Stor. 11,000.0 A. Use		6-27-75	Pending

**SUMMARY OF WATER PERMITS IN THE ENERGY CLASSIFICATION
USING LIGNITE AND WATER RESOURCES**

Priority Date	Applicant	Source	Appropriation Request	Energy Production Proposed	Appropriations Approved	Energy Production Approved
January 18, 1973	Michigan Wisconsin Pipeline Company Lignite Coal Gasification	Missouri River and Lake Sakakawea	*68,000 acre-feet annual use	4 plants - Each 250 million cubic feet day	17,000 acre-foot annual use	1 Plant - 250 million cubic feet day
August 29, 1973	Minnkota Power Cooperative Electric Power Generation	Square Butte Creek	5,000 acre-feet storage 2,480 acre-feet annual use		5,000 acre-feet storage 2,480 acre-feet annual use (total storage capacity now 10,500 acre-feet)	
August 29, 1973	Minnkota Power Cooperative Electric Power Generation	Missouri River (Diversion to Square Butte Creek Storage)	26,000 acre-feet annual use	3 Plants - Each 450 megawatts	7,500 acre-feet annually	1 Plant - 450 megawatts
September 20, 1973	United Power Association - Cooperative Power Association Electric Power Generation	Missouri River	15,000 acre-feet annual use	2 Plants - Each 450 megawatts	15,000 acre-foot annual use	2 Plants - Each 450 megawatts
October 11, 1973	Montana-Dakota Utilities Company Electric Power Generation	Knife River and Tributaries	47,628 acre-feet storage 22,500 acre-feet annual use	3 Plants - Each 440 megawatts) Withdrawn))	
April 2, 1974	El Paso Natural Gas Company	Lake Sakakawea	71,816 acre-feet annual use	4 Plants - Each 268 million cubic feet day) Withdrawn)	
April 17, 1974	Natural Gas Pipeline Company of America	Lake Sakakawea	70,000 acre-feet annual use	4 Plants - Each 250 million cubic feet/day) Withdrawn)	
December 13, 1974	Basin Electric Power Cooperative	Lake Sakakawea	19,000 acre-feet annual use	2 Plants - Each 440 megawatts		
June 27, 1975	Montana Dakota Utilities Company	Missouri River	1,060 acre-feet storage 11,000 acre-feet annual use	1 Plant - 440 megawatts		

*Reduced by State Water Commission Action.